



San Joaquin County Emergency Medical Services Agency



<http://www.sjgov.org/ems>

Mailing Address
PO Box 220
French Camp, CA 95231

Health Care Services Complex
Benton Hall
505 W. Service Rd.
French Camp, CA 95231

Phone Number
(209) 468-6818

FOR IMMEDIATE RELEASE

April 6, 2021

Daily COVID Hospitalizations

Contact: Marissa Matta, EMS PIO

mamatta@sjgov.org

COVID Hospitalizations

French Camp, Calif. – Hospitals in San Joaquin County report having 64 COVID positive patients admitted for care. Adult intensive care units (ICU) are operating at 97% of licensed bed capacity. San Joaquin County hospitals report 1 patient death due to COVID in the past 24 hours.

Over the past week, the number of COVID hospitalizations has increased by 3.2%.

What People Should Do If They Have A Medical Emergency Or Are Sick:

Do not delay seeking care. If you are experiencing a medical emergency such as a heart attack, stroke, difficulty breathing or altered mental status contact 911 to activate the EMS system. If you are ill or sick, contact your physician or healthcare provider.

How People Can Protect Themselves:

We are all in this together. Every person has a role to play. Your actions save lives.

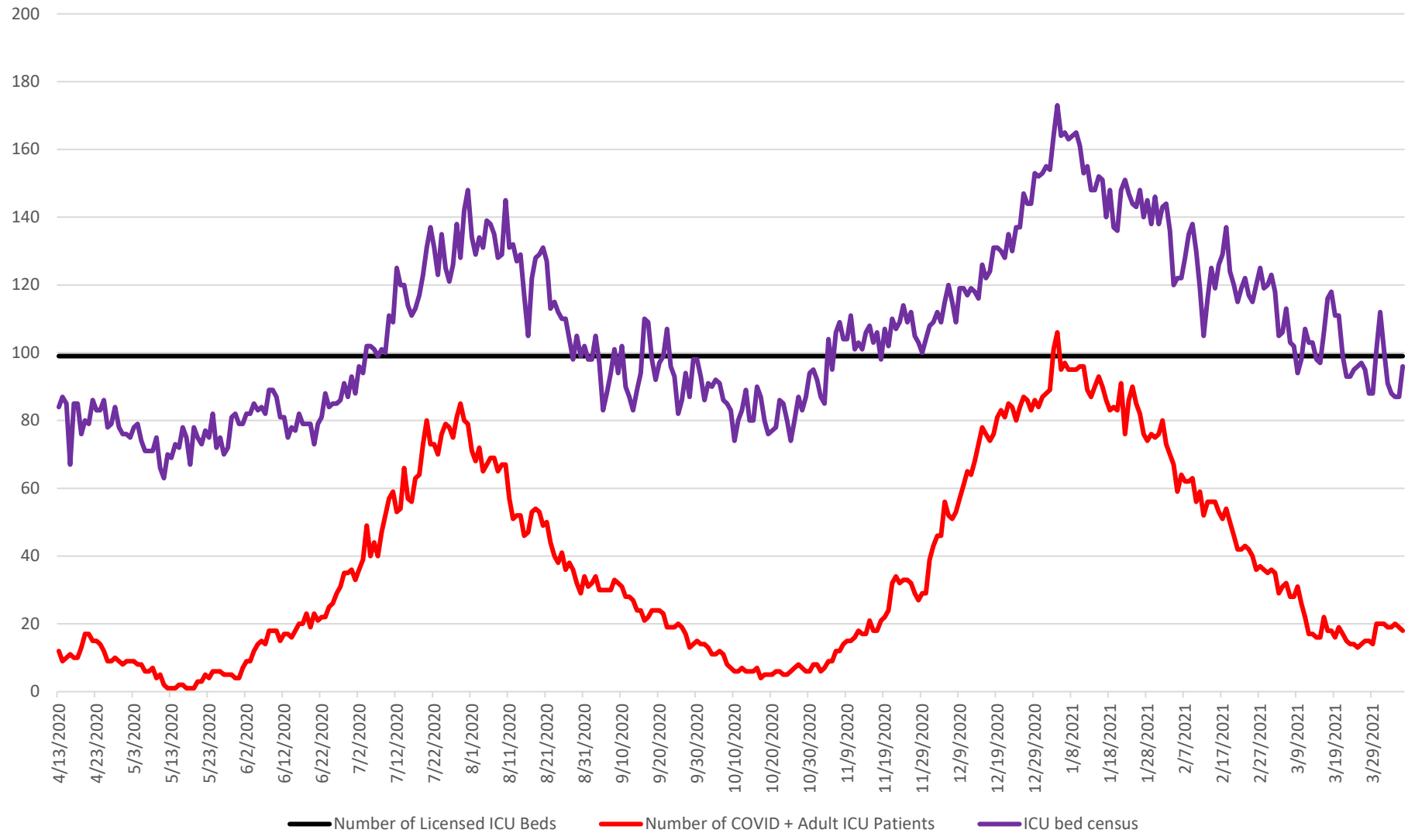
DO: Stay home; Avoid people outside your household; Wash hands with soap and water for at least 20 seconds; Wear a face mask when out in public; Cover your cough or sneeze; Frequently clean and disinfect touched objects and surfaces; Maintain physical distance of six feet whenever outside of the house; Stay away from work, school or other people if you become sick with respiratory symptoms like fever and cough.

###

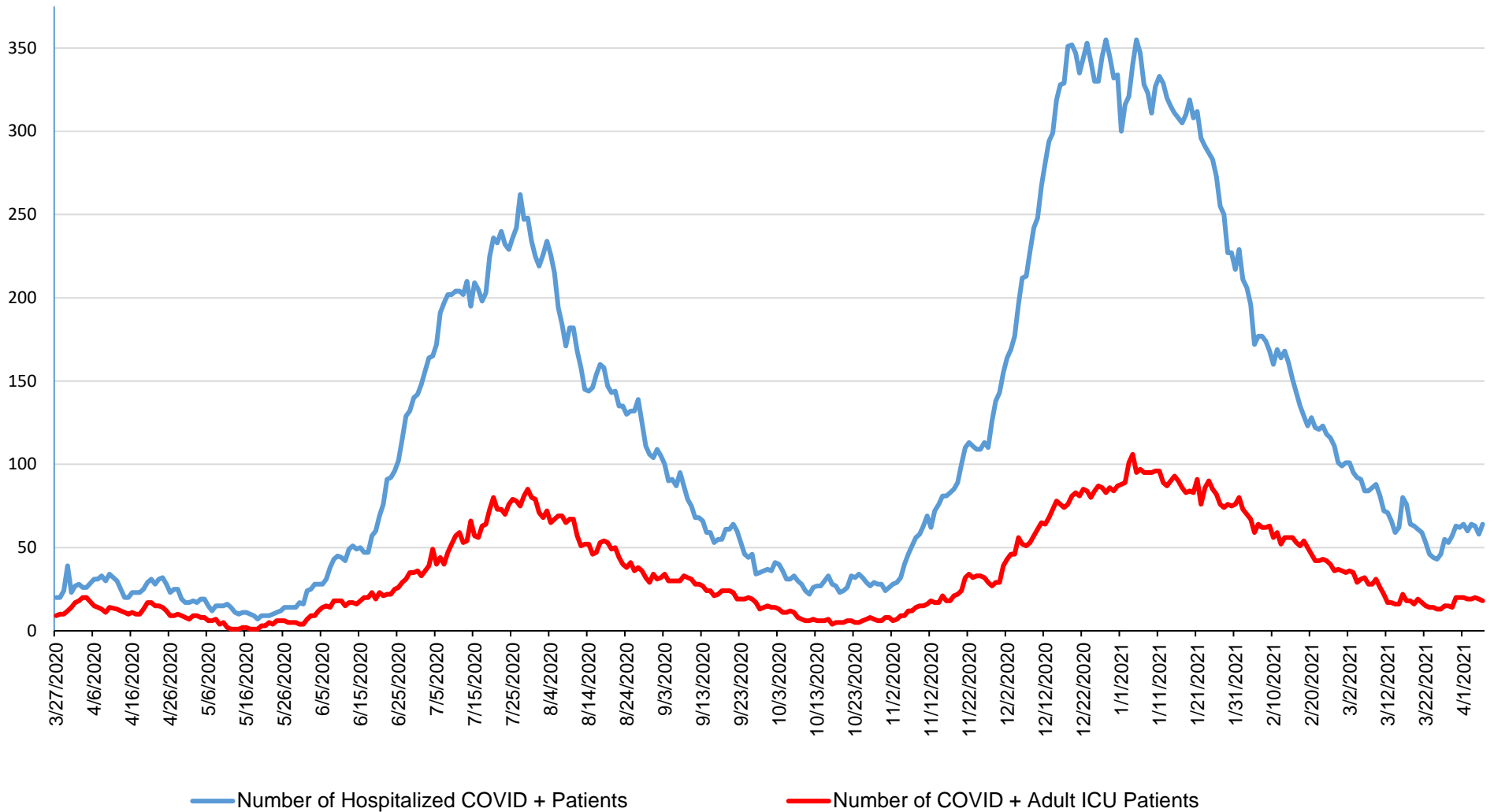
Notes to editors:

- San Joaquin County EMS Agency will provide updates daily on the most current hospital statistics Monday-Friday.
- Graphs and tables show hospital bed capacity, adult ICU bed capacity and historical tracking. Note: the CDPH county data monitoring website combines adult, pediatric and neonatal ICU bed capacity in its reporting.
- This document is intended to prevent and control the transmission of COVID-19 by informing the public and serves a public health purpose.

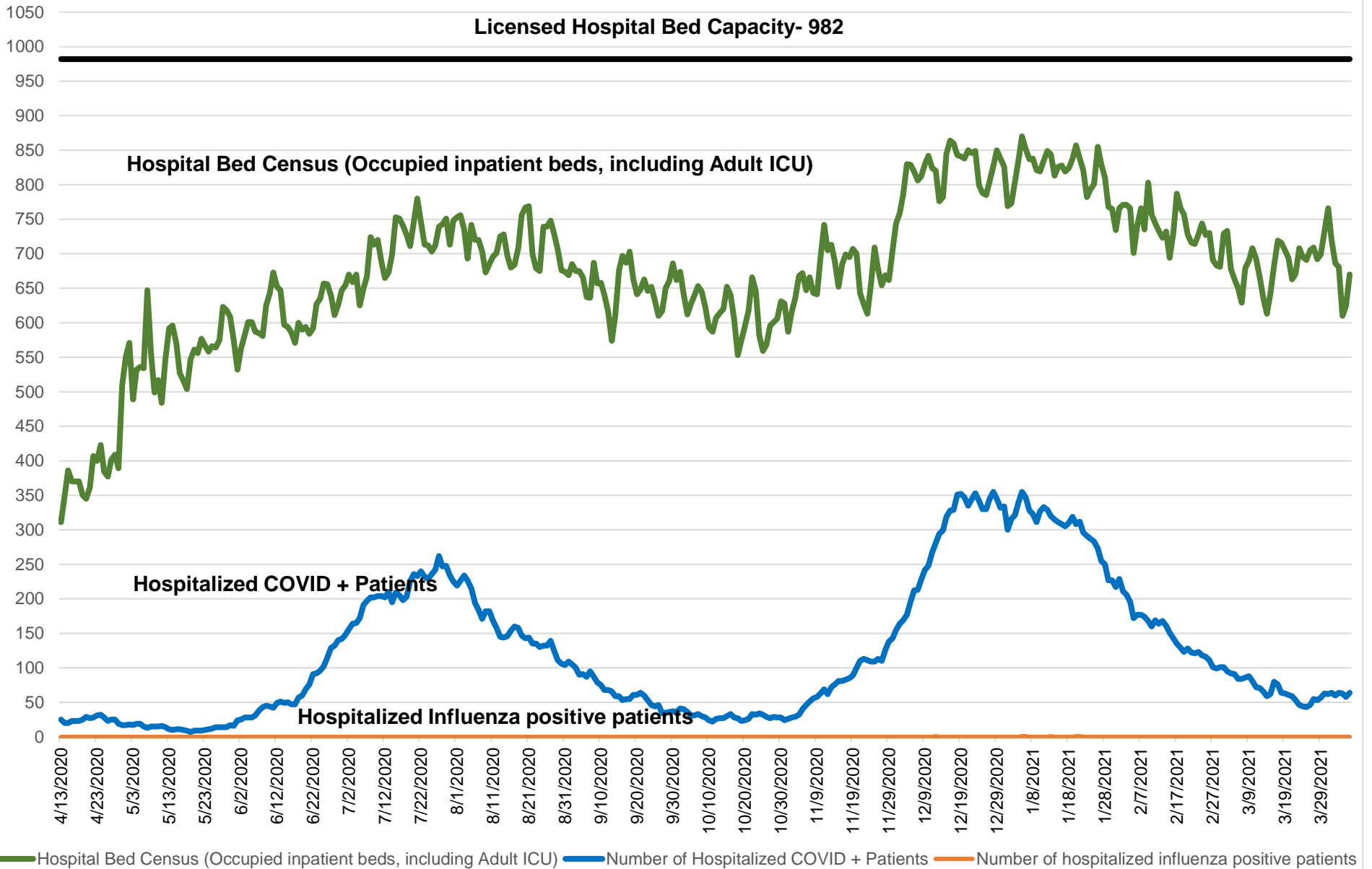
San Joaquin County EMS Agency COVID-19 Adult ICU Hospitalization Tracking Report



San Joaquin County EMS Agency COVID-19 Hospitalization Tracking Report



San Joaquin County EMS Agency Hospital Census Tracking Report



San Joaquin County EMS Agency COVID-19 Hospitalization 30 Day Tracking Report

