



San Joaquin County Emergency Medical Services Agency



<http://www.sjgov.org/ems>

Mailing Address
PO Box 220
French Camp, CA 95231

Health Care Services Complex
Benton Hall
505 W. Service Rd.
French Camp, CA 95231

Phone Number
(209) 468-6818

FOR IMMEDIATE RELEASE

November 16, 2020

Daily COVID Hospitalizations

Contact: Marissa Matta, EMS PIO

mamatta@sjgov.org

COVID Hospitalizations

French Camp, Calif. – Hospitals in San Joaquin County report having 81 COVID positive patients admitted for care. Demand for intensive care services remains steady with adult intensive care units (ICU) operating at 104% of licensed bed capacity. San Joaquin County hospitals report 2 patient deaths due to COVID in the past 24 hours.

Do not delay seeking care. If you are experiencing a medical emergency such as a heart attack, stroke, difficulty breathing or altered mental status contact 911 to activate the EMS system. If you are ill or sick contact your physician or healthcare provider.

What People Should Do If They Have A Medical Emergency Or Are Sick:

Do not delay seeking care. If you are experiencing a medical emergency such as a heart attack, stroke, difficulty breathing or altered mental status contact 911 to activate the EMS system. If you are ill or sick, contact your physician or healthcare provider.

How People Can Protect Themselves:

We are all in this together. Every person has a role to play. Your actions save lives.

DO: Stay home; Avoid people outside your household; Wash hands with soap and water for at least 20 seconds; Wear a face mask when out in public; Cover your cough or sneeze; Frequently clean and disinfect touched objects and surfaces; Maintain physical distance of six feet whenever outside of the house; Stay away from work, school or other people if you become sick with respiratory symptoms like fever and cough.

###

Notes to editors:

- San Joaquin County OES in partnership with San Joaquin County EMS Agency will provide updates daily on the most current hospital statistics Monday-Friday.
- Graphs and tables will be provided showing hospital bed capacity, adult ICU capacity and historical tracking. Note: the CDPH county data monitoring website combines adult, pediatric and neonatal ICU bed capacity in its reporting.
- This document is intended to prevent and control the transmission of COVID-19 by informing the public and serves a public health purpose.

Hospital Bed Capacity in San Joaquin County

Number of Hospital Beds in Use	Percentage of Occupied Licensed Hospital Beds	Number of Hospitalized COVID + Patients	Percentage of Hospital beds Occupied by COVID+ Patients
685	70%	81	12%

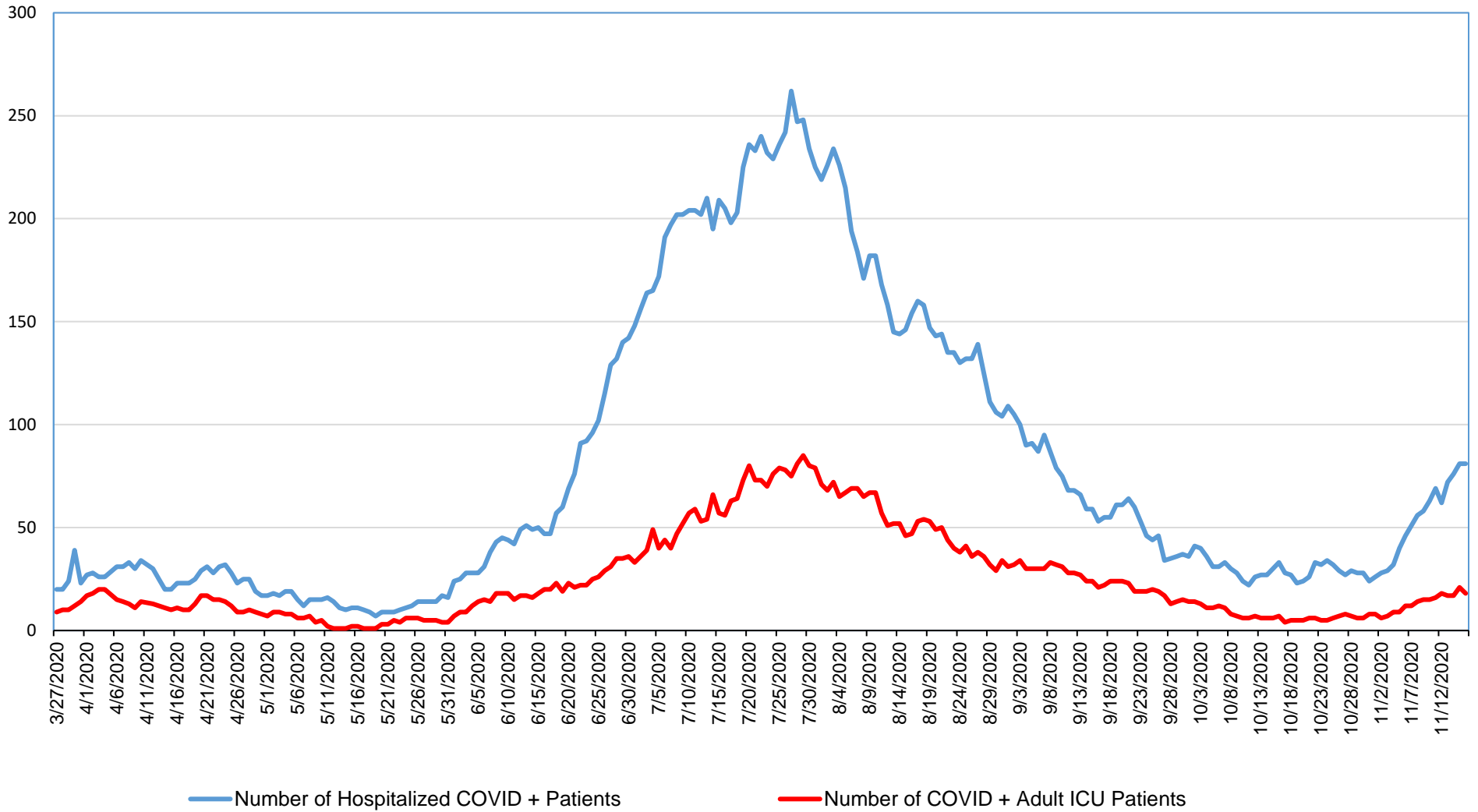
Hospital Intensive Care Capacity in San Joaquin County

Number of Adult ICU Beds in Use	Percentage of Occupied Licensed Adult ICU Beds	Number of COVID + Adult ICU Patients	Percentage of Adult ICU beds Occupied by COVID+ Patients
103	104%	18	17%

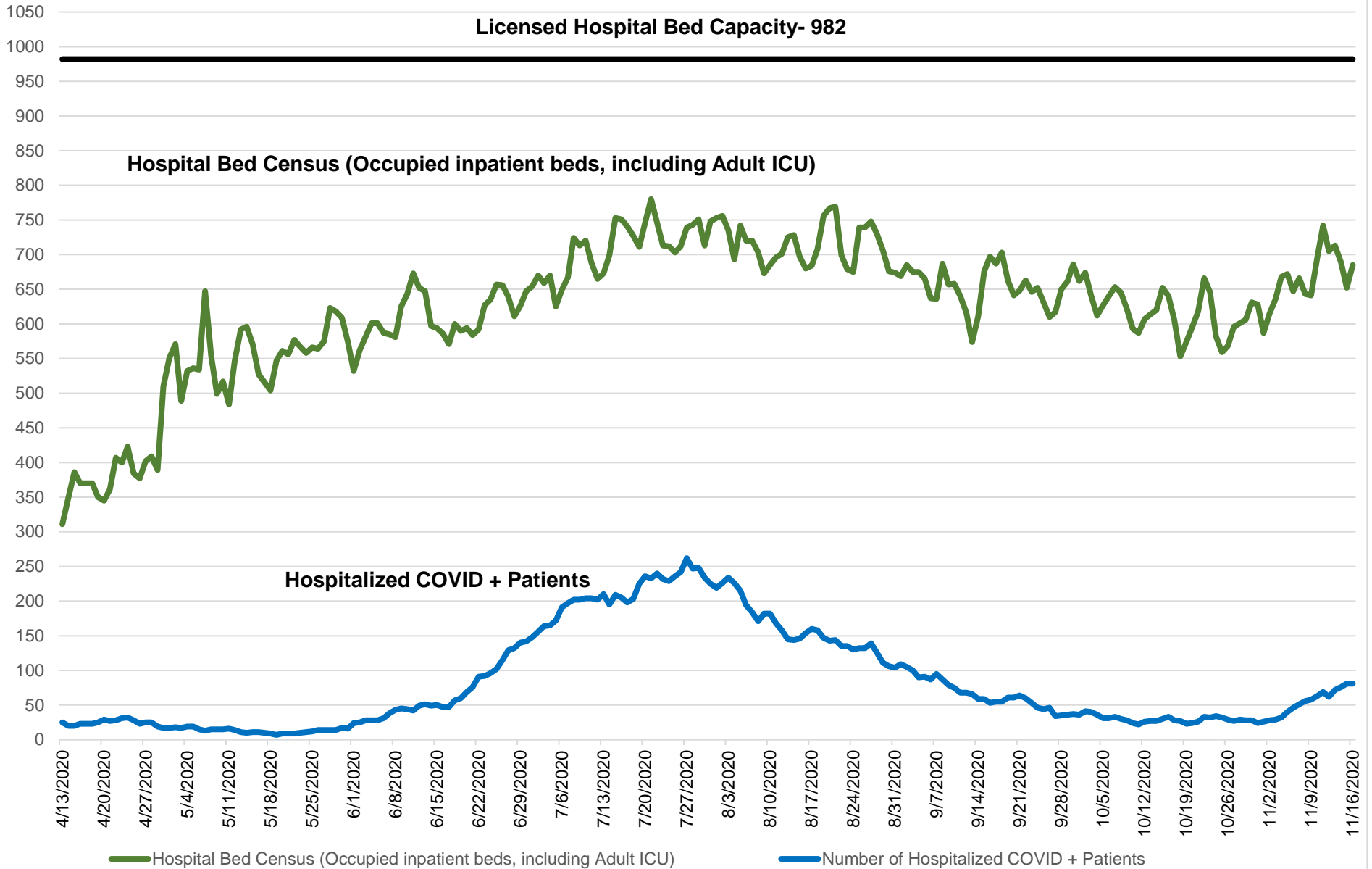
Status of San Joaquin County Hospitals

11/16/2020	Adventist Health Lodi Memorial Hospital	Dameron Hospital Association	Doctors Hospital of Manteca	Kaiser Foundation Hospital Manteca	San Joaquin General Hospital	St. Joseph's Medical Center	Sutter Tracy Community Hospital
Number of Hospital Beds in Use	98	39	31	22	164	293	38
Number of COVID (+) Patients Hospitalized	14	2	5	11	10	34	5
Number of Adult ICU Beds in Use	6	6	4	6	24	49	8
% Adult ICU Capacity	60%	50%	50%	100%	150%	126%	100%
Number of Hospitalized (COVID +) Patients in Adult ICU	4	0	1	3	3	6	1

San Joaquin County EMS Agency COVID-19 Hospitalization Tracking Report



San Joaquin County EMS Agency Hospital Census Tracking Report



San Joaquin County EMS Agency COVID-19 Hospitalization 30 Day Tracking Report

