



San Joaquin County

Emergency Medical Services Agency



<http://www.sjgov.org/ems>

EMS Policy Memorandum No. 2014-03

DATE: October 16, 2014 – **Revised 10-20-14**

TO: All Prehospital Personnel and Providers
Base Hospital Personnel
Emergency Department Physicians and Nurse Liaisons

FROM: Richard N. Buys, M.D., EMS Medical Director
Dan Burch, EMS Administrator

SUBJ.: Prehospital Ebola Response Guidance

Mailing Address
PO Box 220
French Camp, CA 95231

Health Care Services Complex
Benton Hall
500 W. Hospital Rd.
French Camp, CA 95231

Phone Number
(209) 468-6818

Fax Number
(209) 468-6725

The purpose of this memorandum is to supplement EMS Policy Memorandum 2014-02 providing additional guidance for prehospital care personnel in identifying, treating, transporting, and reporting a suspected Ebola patient presentation. It is the responsibility of all transport and non-transport providers to ensure that their personnel receive this information.

EMS patient assessment criteria for isolation/hospital notification:

1. Fever of greater than ~~38.6~~ **38** degrees Celsius or ~~101.5~~ **100.4** degrees Fahrenheit, and additional symptoms such as severe headache, muscle pain, vomiting, diarrhea, abdominal pain, or unexplained hemorrhage; and
2. Travel to West Africa (Guinea, Liberia, Sierra Leone or other countries where EVD transmission has been reported by WHO) within 21 days (3 weeks) of symptom onset.

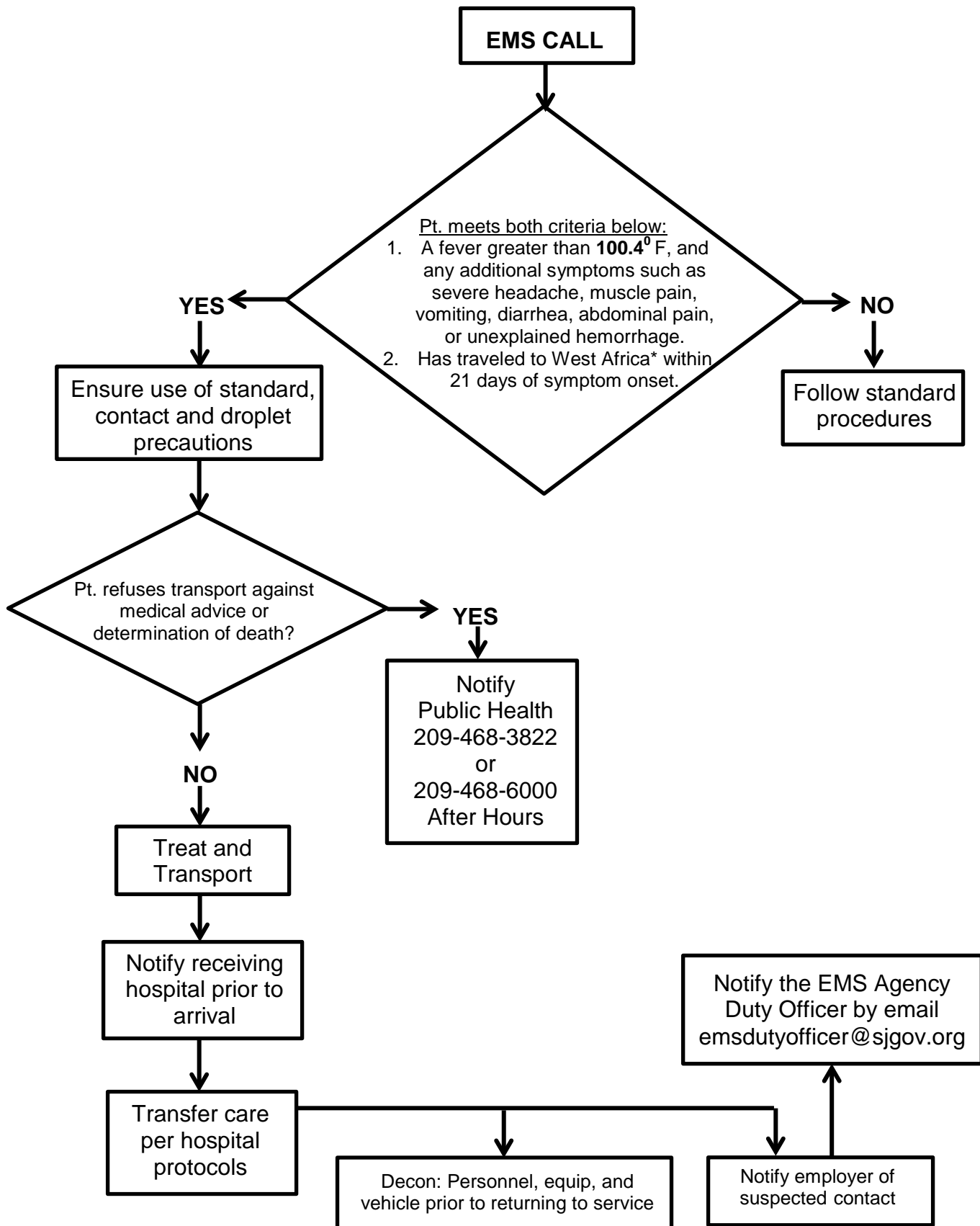
If both criteria are met:

- Use standard patient isolation procedures including contact and droplet precautions followed further assessment, treatment, and transport.
- Transport patient to hospital of their choice in accordance with EMS Policy No. 5201 Medical Patient Destination.
- Notify the receiving hospital of in advance as soon as possible to prepare to receive a possible/suspected Ebola patient.

If patient is not transported:

- Notify San Joaquin County Public Health Services by telephone prior to returning to service: Business Hours: (209) 468-3822 or After Hours (209) 468-6000.

When in question make base hospital contact.



* Applicable West African counties: Guinea, Liberia and Sierra Leone