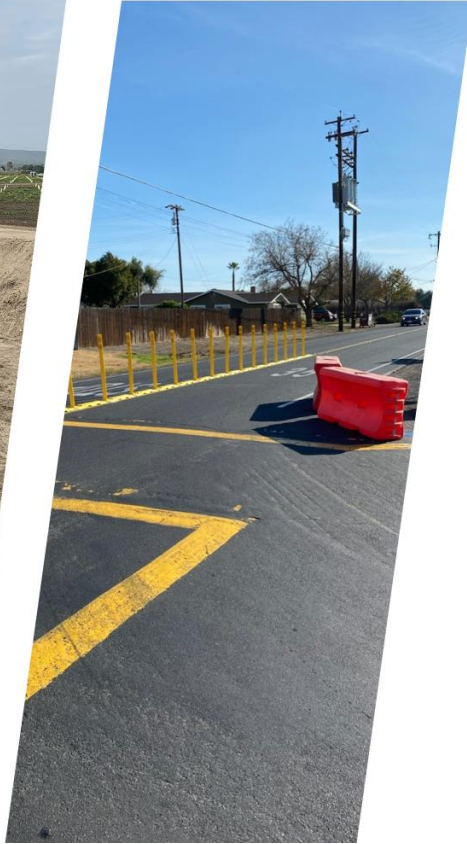


Community Update

Santos Ranch / Lammersville Traffic Calming

May 22, 2021





TODAY'S AGENDA

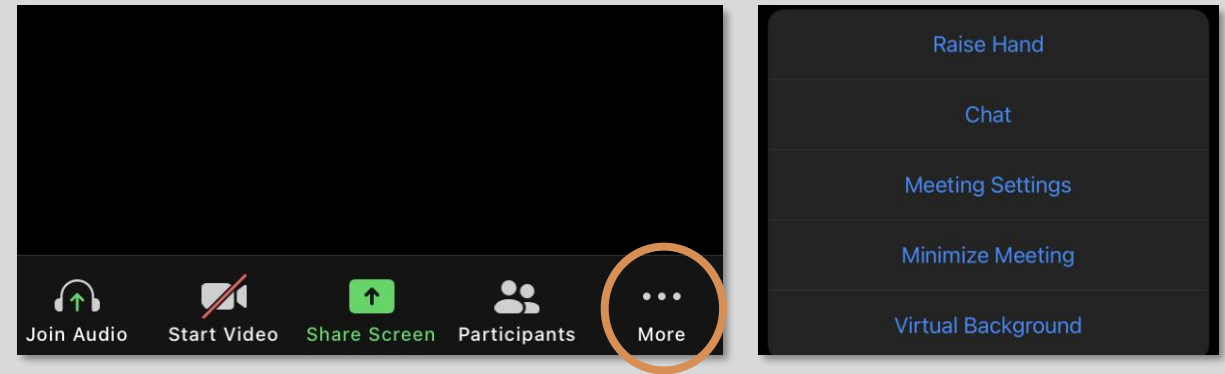
- Welcome & meeting orientation
- Introductions
- Traffic calming efforts to-date
- Enforcement activities
- Long-term transportation planning
 - Discussion/Q&A
- Near-term traffic calming options
 - Discussion/Q&A
- Next steps

BEFORE WE BEGIN...

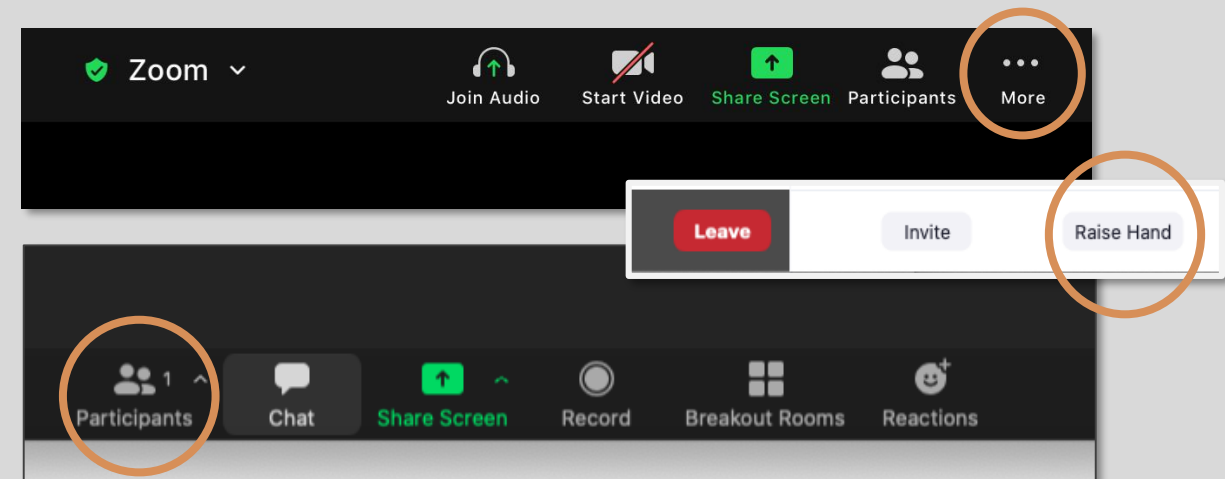
- Participants will remain muted during the presentation to limit background noise.
- Add any questions or comments to the chat box or use the “Raise Hand” function.
- After the meeting - feel free to email us with any questions / comments:

traffic.engineering@sjgov.org

COMPUTER:



TABLET / PHONE:



INTRODUCTIONS

- San Joaquin County
- City Of Tracy
- California Highway Patrol
- Fire District

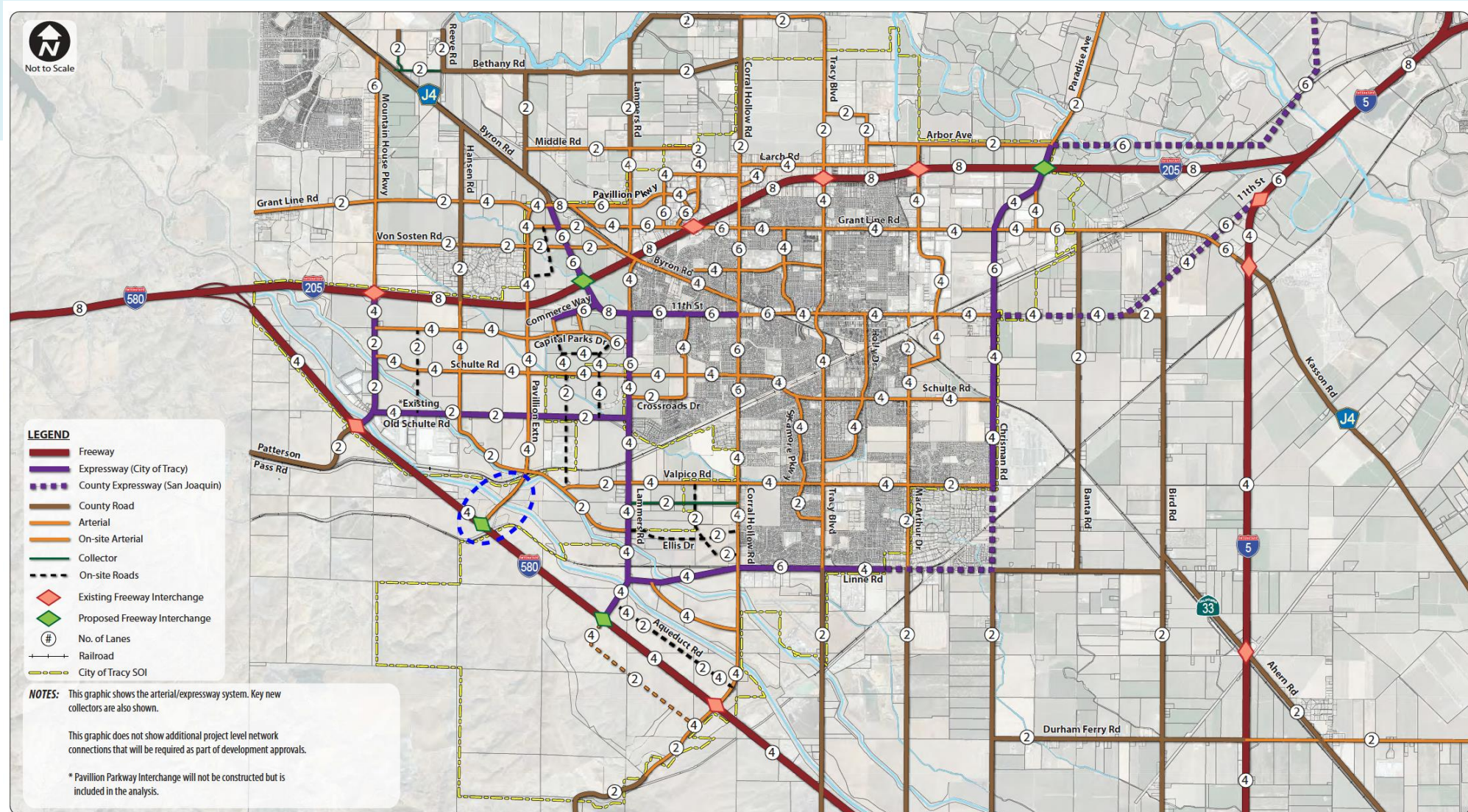


TRAFFIC CALMING EFFORTS TO DATE

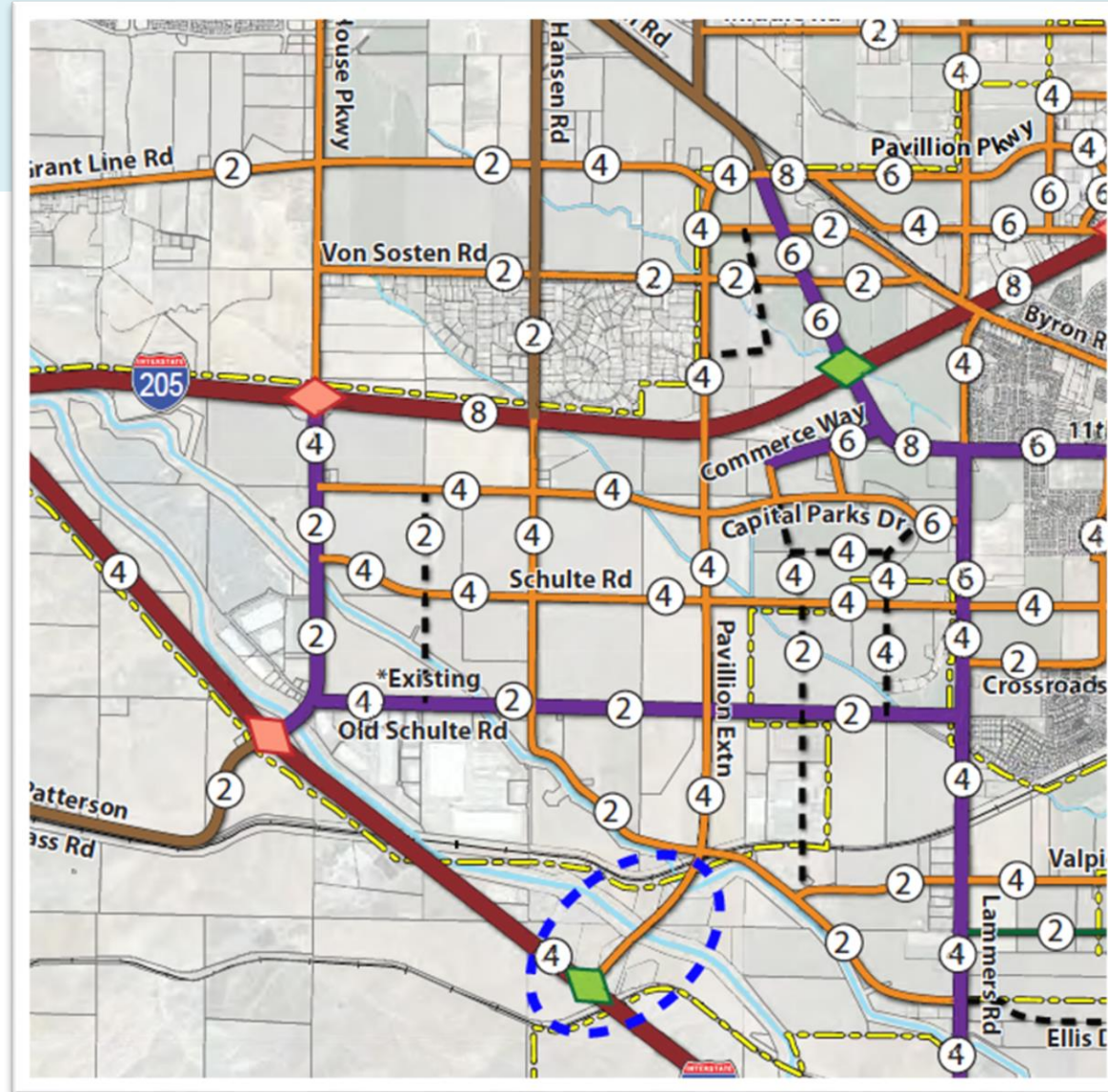
- Signage
- Message boards
- Physical deterrents
- Security guards
- Enforcement update



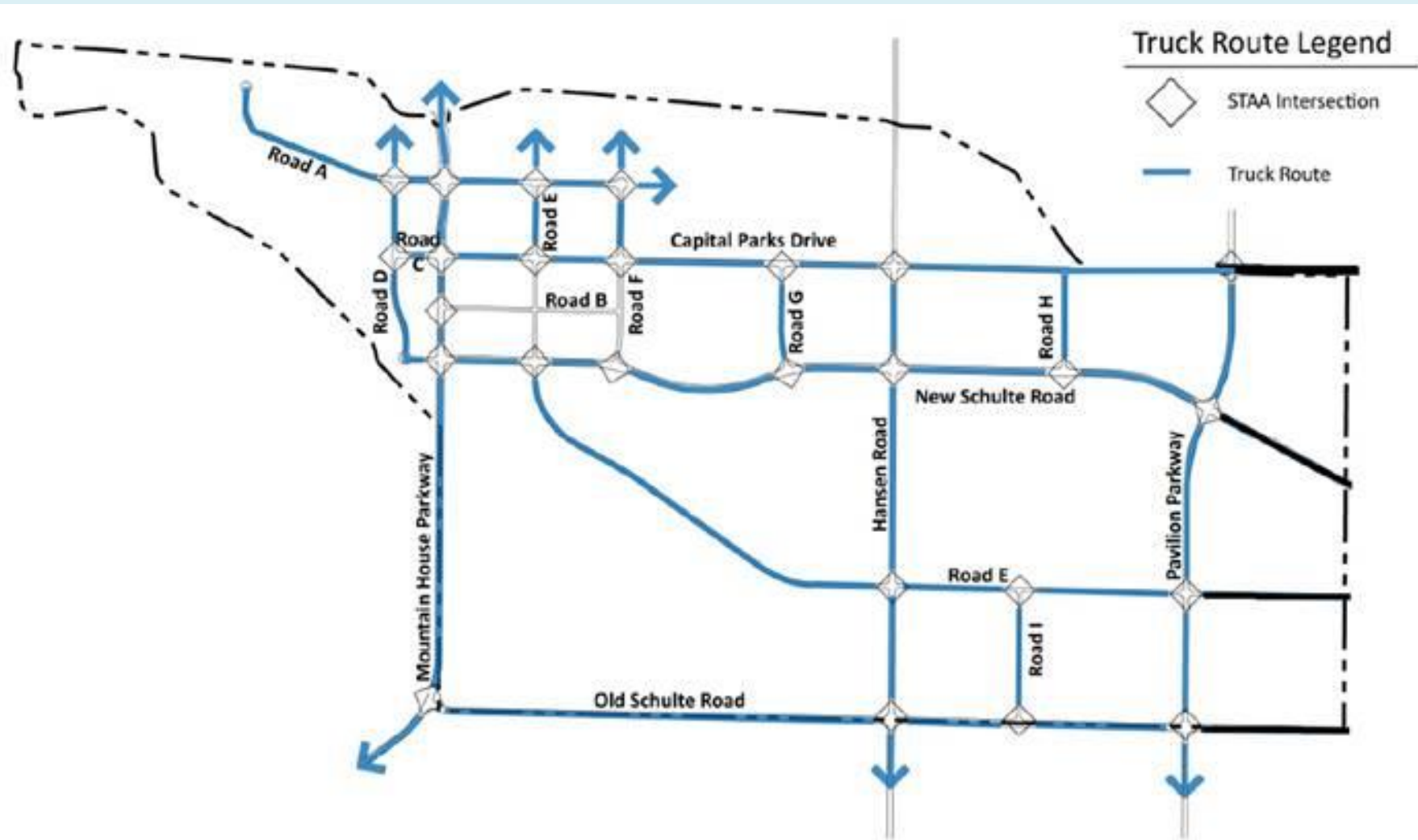
LONG-TERM TRANSPORTATION PLANS



LONG-TERM TRANSPORTATION PLANS



LONG-TERM TRANSPORTATION PLANS



NEAR-TERM TRAFFIC CALMING OPTIONS



SAN JOAQUIN
COUNTY
Greatness grows here.



CITY OF
TRACY
"Think Inside the Triangle"

OPTION 1

FULL CLOSURE (PUBLIC ROAD)

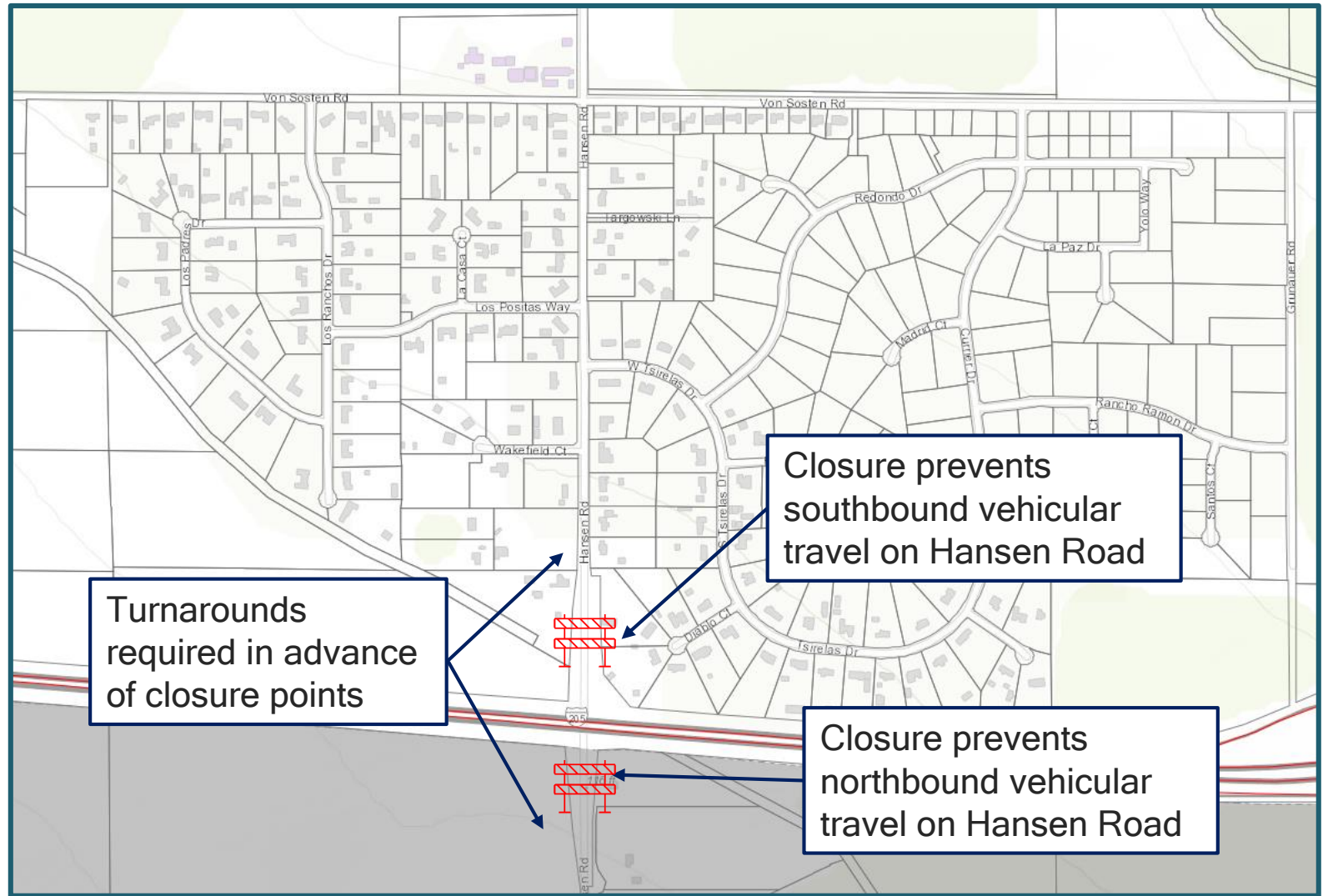
- Barricade placed on both sides of overpass
- Turnarounds installed near closure points on Hansen Road

TIME TO IMPLEMENT:

9 - 12 months

REQUIRED ACTION:

Board finding that road is no longer needed for vehicular traffic



Advantages:

- Eliminates through traffic from the community

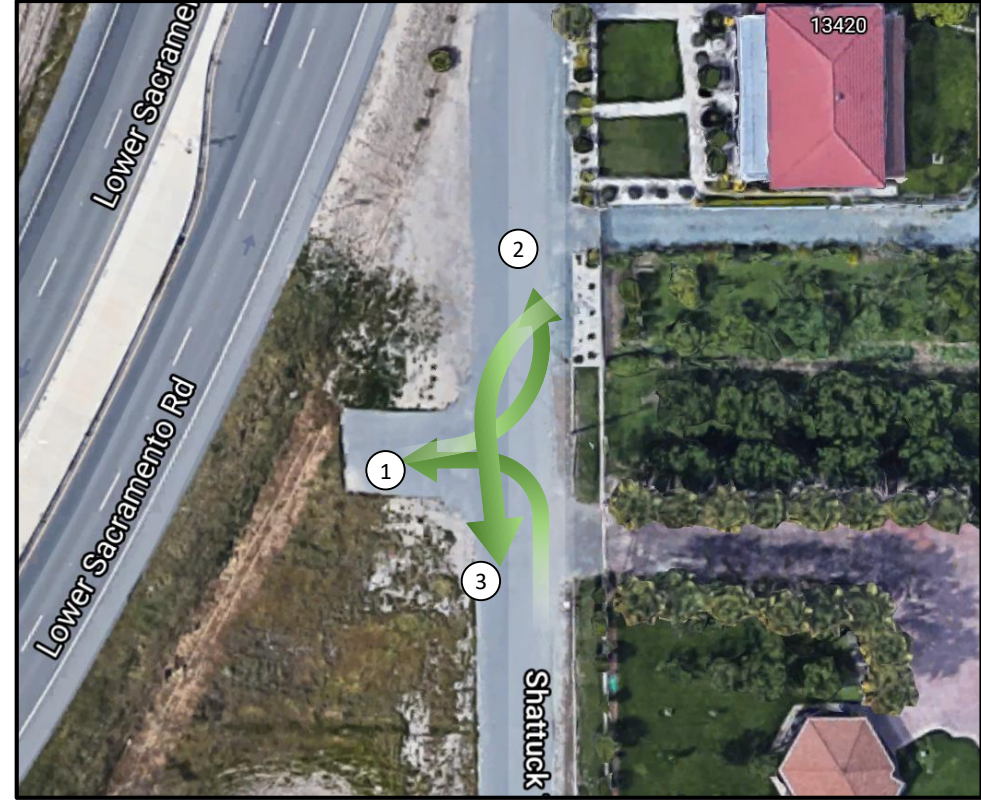
Disadvantages:

- Requires studies (Traffic and Environmental) to determine impacts on other streets, emergency response, other public services, etc.
- Likely to result in additional traffic on Von Sosten Road
- Requires land acquisition to provide turnaround at south end
- Possible nuisance activity at turnaround area
- City agreement to closure required
- Costs to be borne by requesting party

Cul-de-sac



Hammer head: 3-point



Item	Estimated Cost
Traffic Study/Environmental Review	\$50,000
Right-of-way Acquisitions (6,000 Sf)	\$75,000
Turnaround Construction	\$100,000
Barricade Installation	\$10,000
TOTAL*	\$235,000

*Actual costs may vary significantly based on the price paid for land and scope of construction.

OPTION 2

SOFT CLOSURE (ACTIVE STREETS)

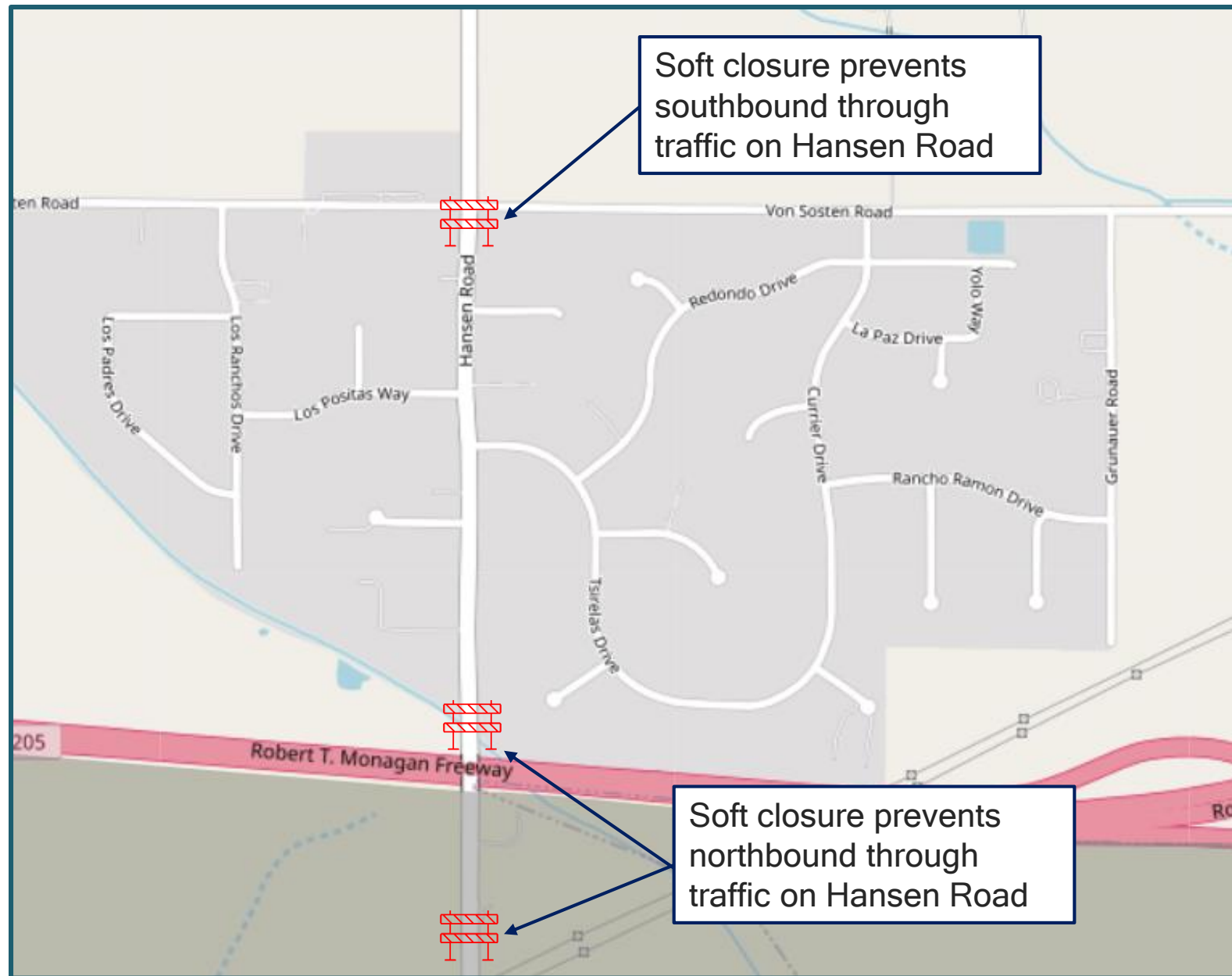
Barricades placed to reduce access to a single opening with signage indicating local traffic only

TIME TO IMPLEMENT:

2 - 3 months

REQUIRED ACTION:

Board adopted Policy to allow soft closures for certain settings



SAN JOAQUIN
COUNTY
Greatness grows here.



CITY OF
TRACY
Think Inside the Triangle™

OPTION 2

SOFT CLOSURE (ACTIVE STREETS)



Barricades placed to reduce access to a single 10' wide opening with signage indicating local traffic only



Example of signage

Advantages:

- Discourages through traffic from the community
- Access for emergency response, public services maintained
- Turnaround not required
- Promotes walking and bicycling
- Costs to implement can be borne by County
- Maintenance of roadway remains with County

Disadvantages:

- Difficult to enforce and could become less effective over time
- Likely to result in more through traffic on Von Sostem Road
- City agreement to soft closure required

OPTION 3

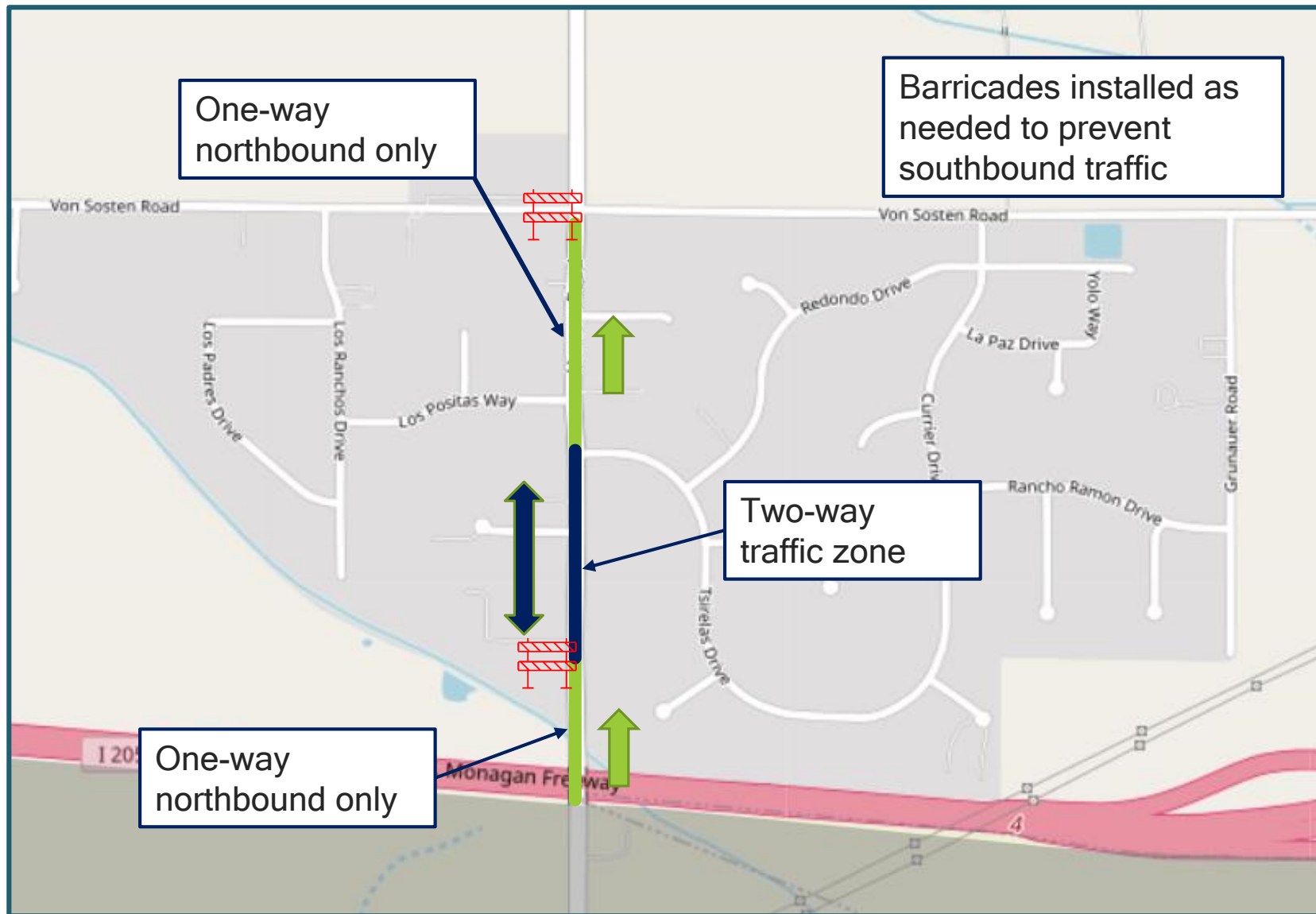
ONE-WAY TRAFFIC (NORTHBOUND ONLY)

Barricades installed as needed to prevent southbound traffic

TIME TO IMPLEMENT:
2 - 3 months

REQUIRED ACTION:

Board ordinance creating one-way street



Advantages:

- Eliminates Southbound traffic at Von Sostan Road
- Access for emergency response, public services maintained
- Turnaround not required
- Promotes walking and bicycling
- Costs to implement can be borne by County

Disadvantages:

- Could result in more through traffic on Von Sostan Road
- Will result in more neighborhood traffic on side streets
- Relies on City measures south of I-205 to restrict trucks

SUMMARY OF OPTIONS

		Estimated Costs	Time To Implement	Impact To Emergency Response / Other Roads
OPTION 1	Full closure	\$235,000 +	9-12 months	TBD
OPTION 2	Soft closure	Handled by County	2-3 months	Moderate
OPTION 3	One-way street	Handled by County	2-3 months	Low/Shared

Let us know:

- Do you have any questions about any of these proposed options?
- Do you have other ideas for near-term solutions?
- What are your thoughts on each of the proposed options?



THANK YOU!

- Subscribe to Santos Ranch Truck Traffic Calming to receive updates:

<https://www.sjgov.org/departments/pwk/news>

- Any questions or comments can be submitted by May 28 to:

traffic.engineering@sjgov.org

