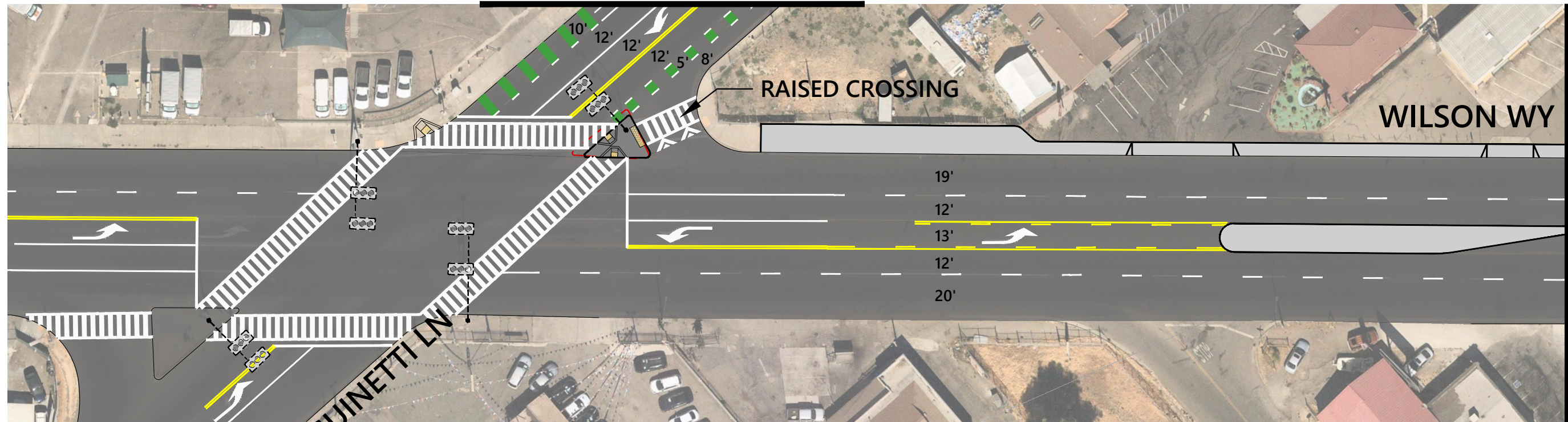


MATCHLINE - SEE FIGURE 3



MATCHLINE - SEE BELOW LEFT

MATCHLINE - SEE FIGURE 5



MATCHLINE - SEE ABOVE RIGHT

MATCHLINE - SEE FIGURE 2

N.T.S.

LEGEND

- EXISTING CURB LINE
- CURBLINE TO BE REMOVED
- PROPOSED CURB
- PROPOSED RAMP

- ROADWAY
- PROPOSED SIDEWALK
- PROPOSED LANDSCAPE
- PROPOSED NEW TRAFFIC LIGHTS
- PROPOSED RECTANGULAR RAPID FLASHING BEACON

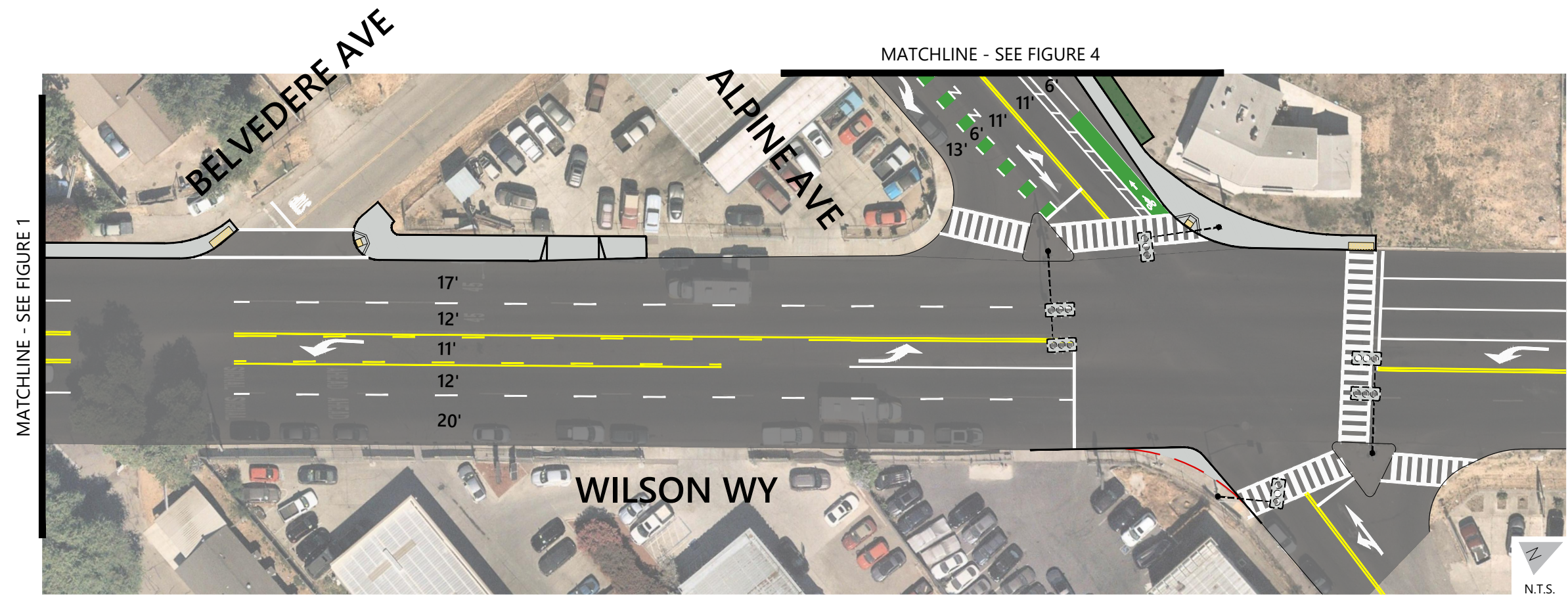


CONCEPTUAL - NOT FOR CONSTRUCTION. ADDITIONAL
DETAILED ANALYSIS AND ENGINEERING DESIGN REQUIRED.

Figure 1

Wilson Way Improvements

CADD FILE: W:\Walmart Creek N Drive\PROJECTS\WC22\WC22-3894-00_San_Joaquin_County_ATP_Grants_Support\Graphics\CAD\Concepts\3894-Concept.dwg
Jun 09, 2022



LEGEND

	EXISTING CURB LINE		ROADWAY
	CURBLINE TO BE REMOVED		PROPOSED SIDEWALK
	PROPOSED CURB		PROPOSED LANDSCAPE
	PROPOSED RAMP		PROPOSED NEW TRAFFIC LIGHTS
			PROPOSED RECTANGULAR RAPID FLASHING BEACON



CONCEPTUAL - NOT FOR CONSTRUCTION. ADDITIONAL
DETAILED ANALYSIS AND ENGINEERING DESIGN REQUIRED.

Figure 2
Wilson Way Improvements

CADD FILE: W:\Wolmut Creek N Drive\PROJECTS\WC22\WC22-3894-00_San_Joaquin_County_ATP_Grants_Support\Graphics\CAD\Concepts\3894-Concept.dwg
Jun 09, 2022

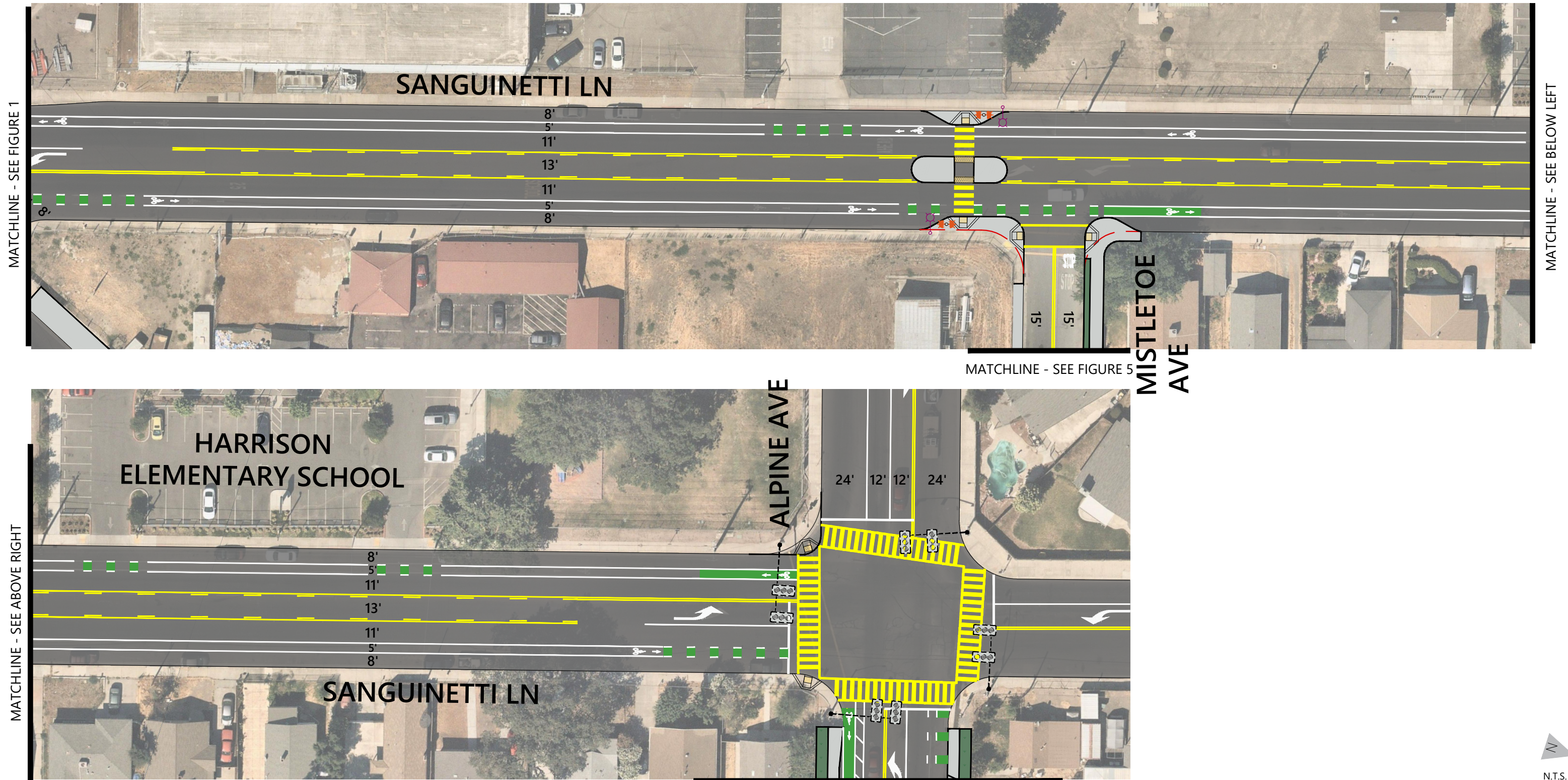
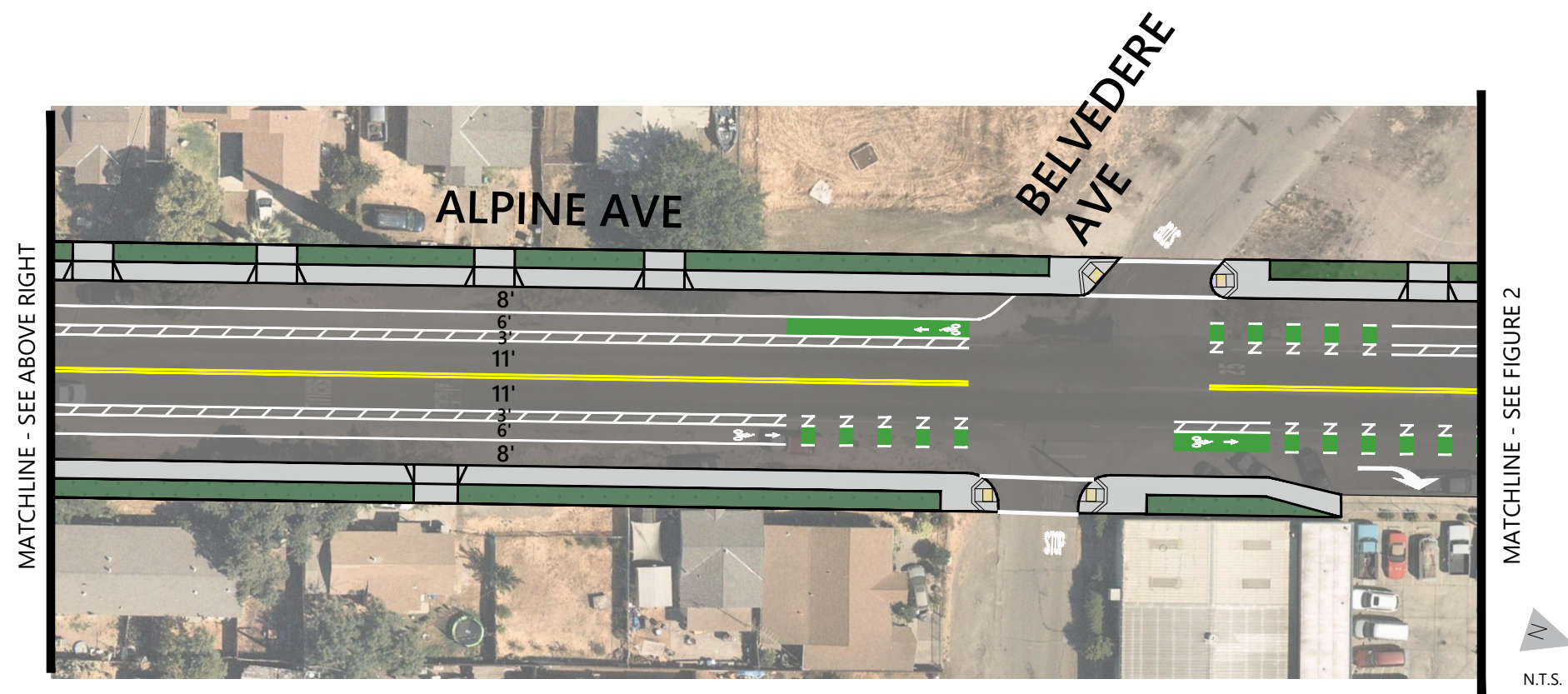
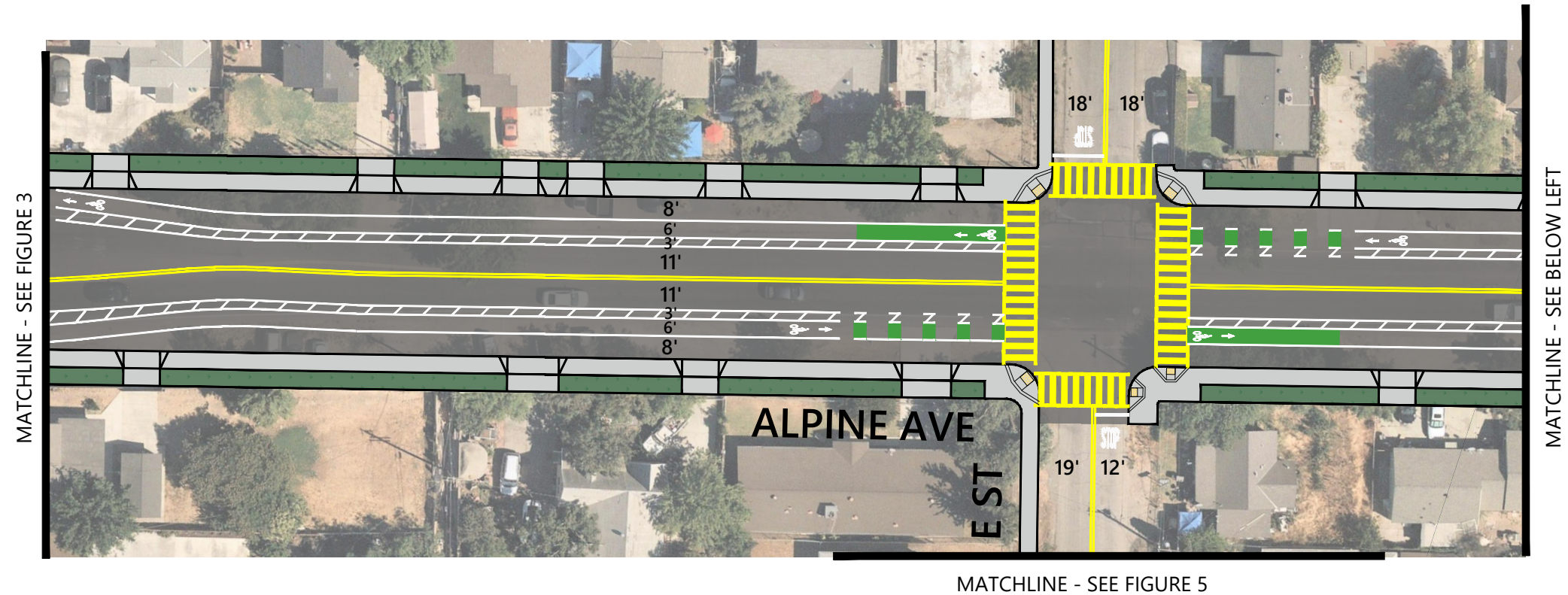


Figure 3
Sanguinetti Lane Improvements

CADD FILE: W:\Walmart Creek N Drive\PROJECTS\WC22\WC22-3894-00_Son_Joaquin_County_ATP_Grants_Support\Graphics\CAD\Concepts\3894-Concept.dwg
Jun 09, 2022



CONCEPTUAL - NOT FOR CONSTRUCTION. ADDITIONAL
DETAILED ANALYSIS AND ENGINEERING DESIGN REQUIRED.



LEGEND

- | | | | |
|--|------------------------|--|--|
| | EXISTING CURB LINE | | ROADWAY |
| | CURBLINE TO BE REMOVED | | PROPOSED SIDEWALK |
| | PROPOSED CURB | | PROPOSED LANDSCAPE |
| | PROPOSED RAMP | | PROPOSED NEW TRAFFIC LIGHTS |
| | | | PROPOSED RECTANGULAR RAPID FLASHING BEACON |

Figure 4
Alpine Avenue Improvements

CADD FILE: N:\PROJECTS\W222\W222-3894.00_Sm_Joaquin_County_ATF_Grant_Support\Graphics\CAD\Concepts\3894-Concept2.dwg
Jun 10, 2022



CONCEPTUAL - NOT FOR CONSTRUCTION. ADDITIONAL
DETAILED ANALYSIS AND ENGINEERING DESIGN REQUIRED.



LEGEND

- | | | | |
|--|------------------------|--|--|
| | EXISTING CURB LINE | | ROADWAY |
| | CURBLINE TO BE REMOVED | | PROPOSED SIDEWALK |
| | PROPOSED CURB | | PROPOSED LANDSCAPE |
| | PROPOSED RAMP | | PROPOSED NEW TRAFFIC LIGHTS |
| | | | PROPOSED RECTANGULAR RAPID FLASHING BEACON |



Figure 5
E Street & Mistletoe Avenue Improvements