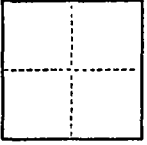


## CORNER RECORD

COUNTY OF San Joaquin T. — R. — Sec. 42 & 53 Weber Grant MERIDIAN CALIFORNIA  
 CORNER TYPE: GOV'T. CORNER ☐ MEANDER ☐ RANCHO ☐ CONTROL ☐ OTHER ☒  
 CORNER IDENTIFICATION — DATE OF VISIT 19



CORNER — LEFT AS FOUND ☐ FOUND AND TAGGED ☐ REESTABLISHED OBLITERATED CORNER ☐ REBUILT ☐

PHYSICAL DESCRIPTION OF CORNER FOUND; EVIDENCE AND METHOD USED TO IDENTIFY OR REESTABLISH see sketch for  
corner's found and set on Lot 24 Cherokee Industrial  
Park, Maps & Plats Vol. 24, Pg. 7, San Joaquin County  
Records

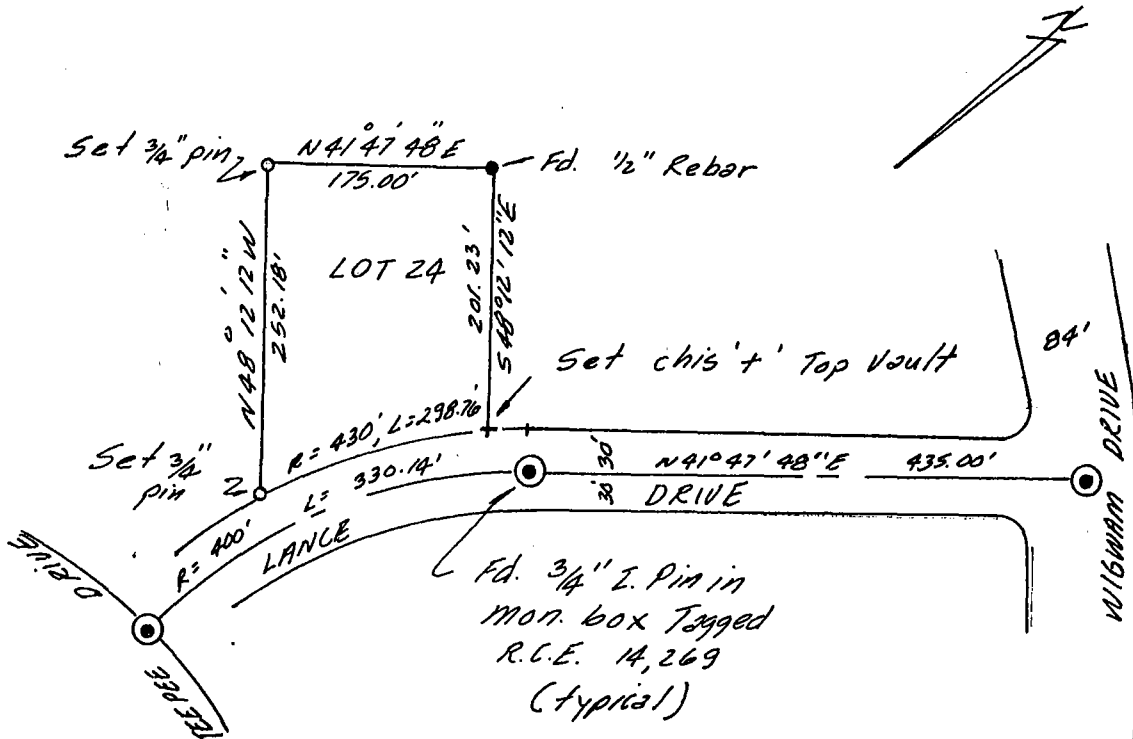
PHYSICAL DESCRIPTION OF MONUMENTS REBUILT OR PERPETUATED

N/A

CALIFORNIA COORDINATE SYSTEM ORDER: FIRST ☐ SECOND ☐ THIRD ☐ N/A  
 STATIONS USED: NGS (USC & GS) ☐ STATE ☐ COUNTY ☐ OTHER ☐ STATION — STATION —  
 ZONE — ELEVATION — NORTHINGS (Y) — EASTINGS (X) —

(Fold)

SKETCH: (Include reference tie or witness points, remarks and topo of area)



## SURVEYOR'S CERTIFICATE

THIS CORNER RECORD WAS PREPARED BY ME OR UNDER MY  
 DIRECTION IN CONFORMANCE WITH THE LAND SURVEYORS ACT  
 ON 5-12 1987.

SIGNED: Robert W. Siegfried

L.S. or R.C.E. No.: RCE # 8189  
Expires 9-30-88

SEAL

## COUNTY SURVEYOR'S CERTIFICATE

THE CORNER RECORD WAS RECEIVED MAY 13, 1987  
 AND EXAMINED AND FILED MAY 26, 1987

BY: Robert DeHamer  
 TITLE: Chief Deputy County Surveyor

DOCUMENT No. CR-87-003

STATEMENT ON BACK OF SHEET

YES ☐ NO ☒

