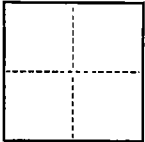


CORNER RECORD

COUNTY OF SAN JOAQUIN T. RANCHO EL PESCADERO R. MERIDIAN CALIFORNIA

CORNER TYPE: GOV'T. CORNER ☐ MEANDER ☐ RANCHO ☐ CONTROL ☐ OTHER ☒
CORNER IDENTIFICATION — DATE OF VISIT JULY 11, 19 87



REMONUMENT THE EAST LINE OF LOT 52A AS PER REFERENCE (A)

CORNER — LEFT AS FOUND ☐ FOUND AND TAGGED ☐ REESTABLISHED OBLITERATED CORNER ☒ REBUILT ☐

PHYSICAL DESCRIPTION OF CORNER FOUND, EVIDENCE AND METHOD USED TO IDENTIFY OR REESTABLISH

SEE SKETCH

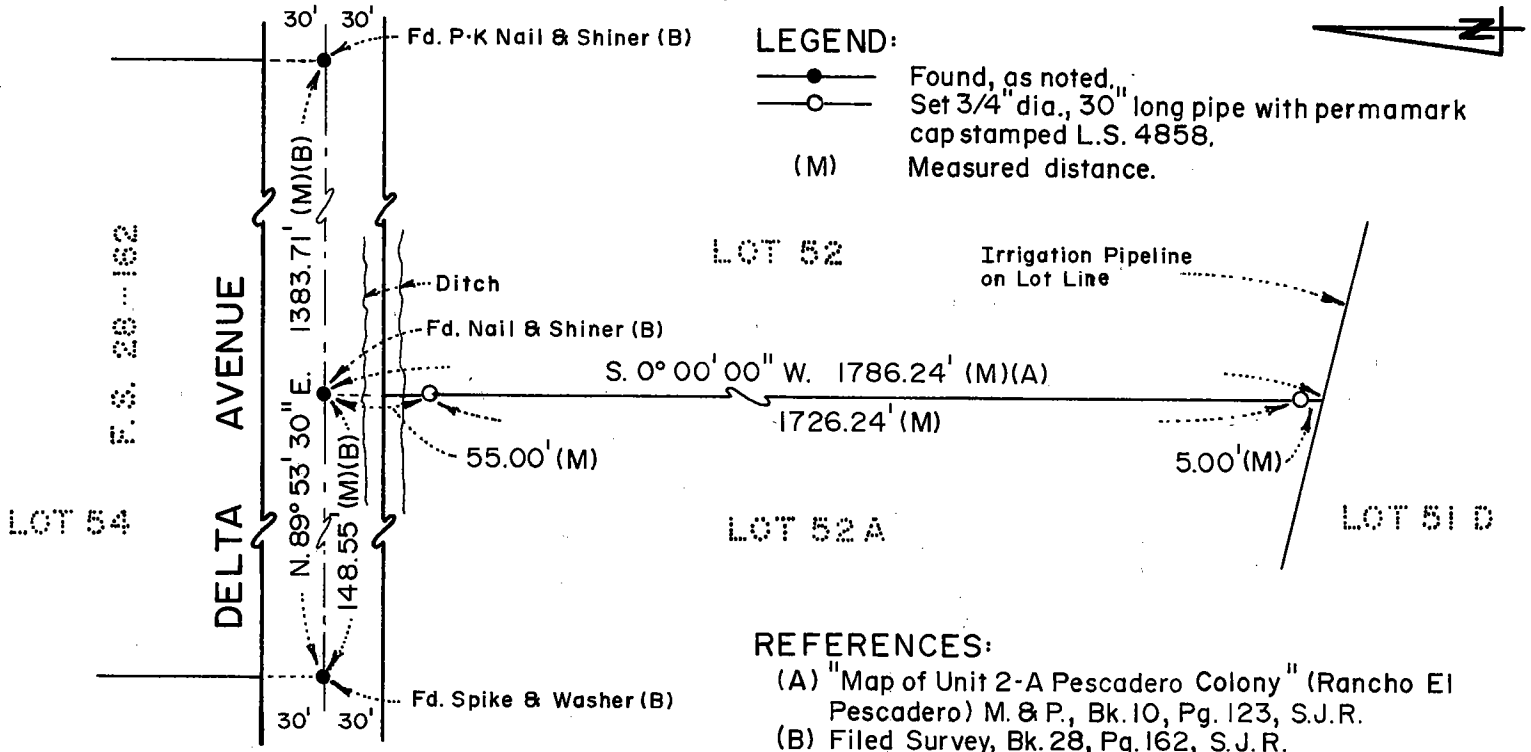
PHYSICAL DESCRIPTION OF MONUMENTS REBUILT OR PERPETUATED

N/A

CALIFORNIA COORDINATE SYSTEM ORDER: FIRST ☐ SECOND ☐ THIRD ☐
STATIONS USED: NGS (USC & GS) ☐ STATE ☐ COUNTY ☐ OTHER ☐ STATION STATION
ZONE ELEVATION NORTHINGS (Y) EASTINGS (X)

(Fold)

SKETCH: (Include reference tie or witness points, remarks and topo of area)



REFERENCES:
(A) "Map of Unit 2-A Pescadero Colony" (Rancho El Pescadero) M. & P, Bk.10, Pg.123, S.J.R.
(B) Filed Survey, Bk.28, Pg.162, S.J.R.

SURVEYOR'S CERTIFICATE

THIS CORNER RECORD WAS PREPARED BY ME OR UNDER MY DIRECTION IN CONFORMANCE WITH THE LAND SURVEYORS ACT ON AUGUST 3, 19 87

SIGNED: [Signature]
L.S. or R.C.E. No.: 4858



COUNTY SURVEYOR'S CERTIFICATE

THE CORNER RECORD WAS RECEIVED AUG. 7, 19 87
AND EXAMINED AND FILED 8/18 19 87

BY: [Signature]
TITLE: COUNTY SURVEYOR

DOCUMENT No. CR-87-002

STATEMENT ON BACK OF SHEET

YES ☐ NO ☒