

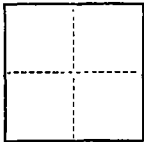
CORNER RECORD

Section 53, C. M. Weber Grant

COUNTY OF San Joaquin, ☒ XXXXXX XXXXXX CALIFORNIA

CORNER TYPE: GOV'T. CORNER ☐ MEANDER ☐ RANCHO ☐ CONTROL ☐ OTHER ☒

CORNER IDENTIFICATION — DATE OF VISIT May 1 1987



Southwest and southeast corners of Parcel J shown on Parcel Map
filed in Book 3 of Parcel Maps, Page 115, San Joaquin County Records.

CORNER — LEFT AS FOUND ☐ FOUND AND TAGGED ☐ REESTABLISHED OBLITERATED CORNER ☒ REBUILT ☐

PHYSICAL DESCRIPTION OF CORNER FOUND; EVIDENCE AND METHOD USED TO IDENTIFY OR REESTABLISH

PHYSICAL DESCRIPTION OF MONUMENTS REBUILT OR PERPETUATED

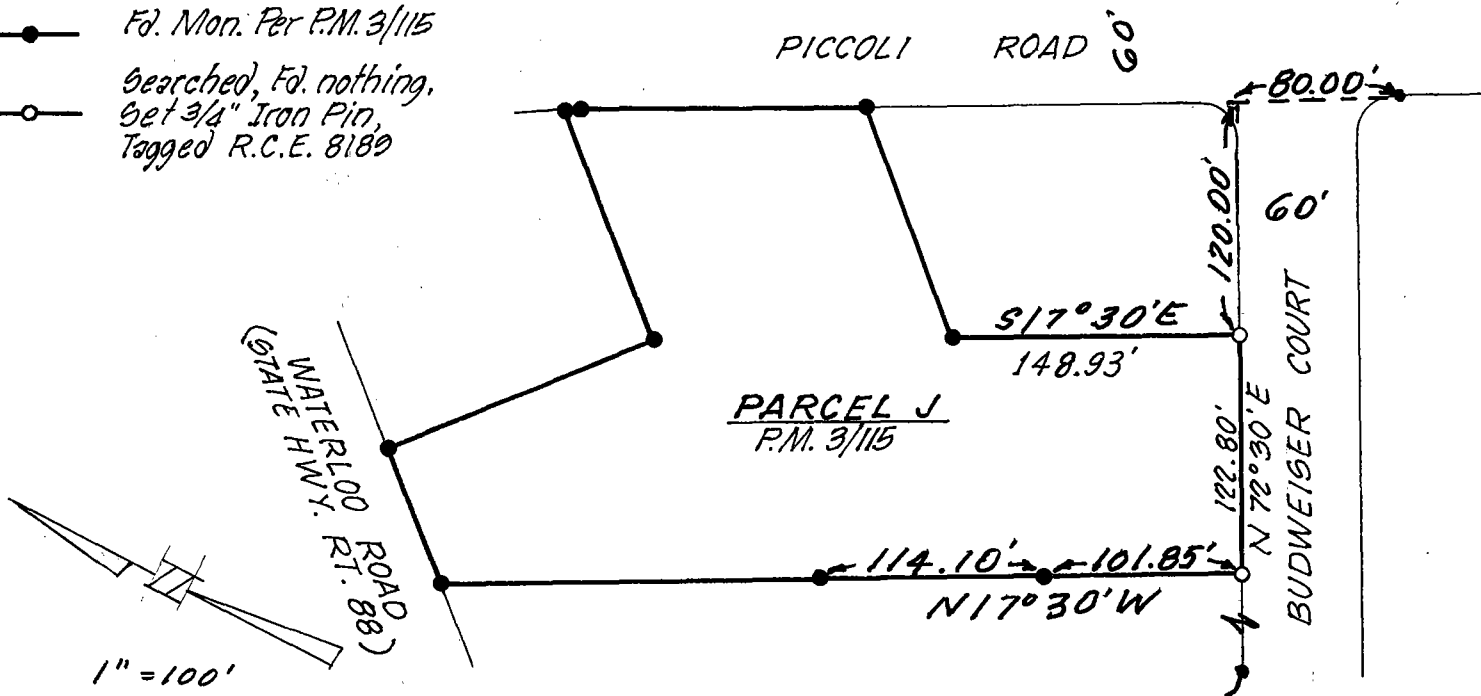
CALIFORNIA COORDINATE SYSTEM ORDER: FIRST ☐ SECOND ☐ THIRD ☐
STATIONS USED: NGS (USC & GS) ☐ STATE ☐ COUNTY ☐ OTHER ☐ STATION _____ STATION _____
ZONE _____ ELEVATION _____ NORTHINGS (Y) _____ EASTINGS (X) _____

(Fold)

SKETCH: (Include reference tie or witness points, remarks and topo of area)

LEGEND

- *Fd. Mon. Per P.M. 3/115*
- *Searched, Fd. nothing,
Set 3/4" Iron Pin,
Tagged R.C.E. 8189*

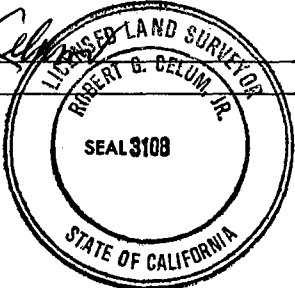


SURVEYOR'S CERTIFICATE

THIS CORNER RECORD WAS PREPARED BY ME OR UNDER MY
DIRECTION IN CONFORMANCE WITH THE LAND SURVEYORS ACT
ON May 1 19 87

SIGNED: Robert G. Celum

(L.S.) or R.C.E. No.: 3108



COUNTY SURVEYOR'S CERTIFICATE

THE CORNER RECORD WAS RECEIVED MAY 7 19 87
AND EXAMINED AND FILED May 13 19 87

BY: Denny M. Durato

TITLE: County Surveyor

DOCUMENT No. CR-B7-001

STATEMENT ON BACK OF SHEET

YES ☐ NO ☒