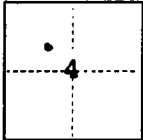


CORNER RECORD

COUNTY OF San Joaquin T. 2S. R. 9E. Mount Diablo MERIDIAN CALIFORNIA

CORNER TYPE: GOV'T. CORNER ☐ MEANDER ☐ RANCHO ☐ CONTROL ☐ OTHER ☒ Lot Corners
CORNER IDENTIFICATION — DATE OF VISIT July 7, 1986



RETRACEMENT OF THE WESTERLY BOUNDARY OF LOT 5
OF J. W. COLEY ADDITION TO ESCALON, VOL. 5,
PAGE 24, MAPS & PLATS, SAN JOAQUIN COUNTY.

CORNER — LEFT AS FOUND ☐ FOUND AND TAGGED ☐ REESTABLISHED OBLITERATED CORNER ☒ REBUILT ☐

PHYSICAL DESCRIPTION OF CORNER FOUND; EVIDENCE AND METHOD USED TO IDENTIFY OR REESTABLISH

Found Monuments as indicated on sketch below.

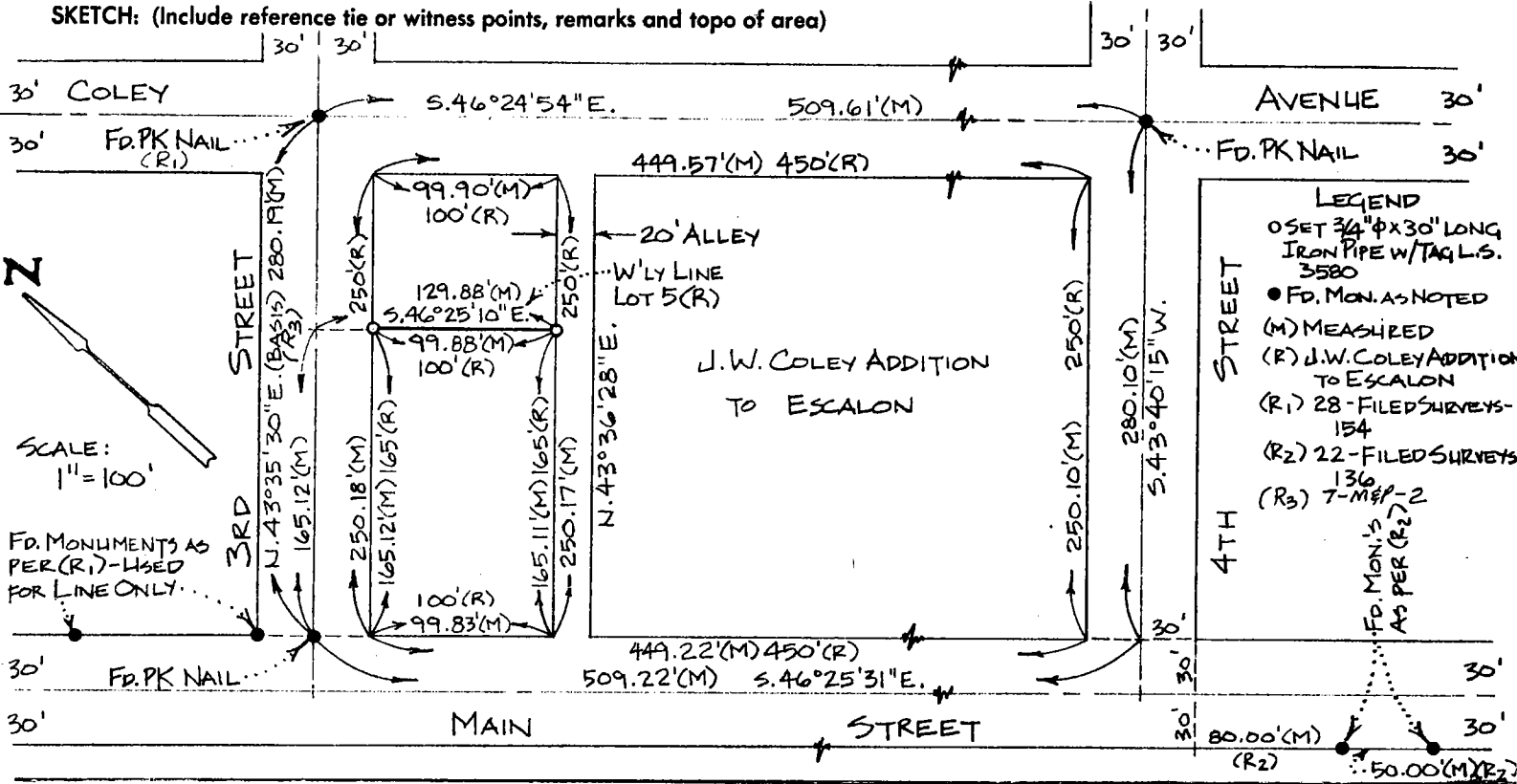
PHYSICAL DESCRIPTION OF MONUMENTS REBUILT OR PERPETUATED

Set 3/4" Ø X 30" long Iron Pipe w/Tag L.S. 3580

CALIFORNIA COORDINATE SYSTEM ORDER: FIRST ☐ SECOND ☐ THIRD ☐
STATIONS USED: NGS (USC & GS) ☐ STATE ☐ COUNTY ☐ OTHER ☐ STATION _____ STATION _____
ZONE _____ ELEVATION _____ NORTHINGS (Y) _____ EASTINGS (X) _____

(Fold)

SKETCH: (Include reference tie or witness points, remarks and topo of area)

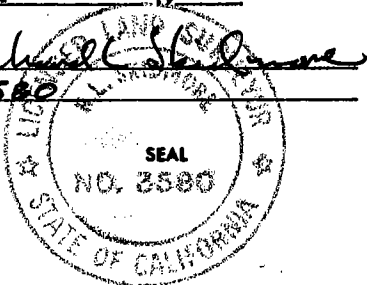


SURVEYOR'S CERTIFICATE

THIS CORNER RECORD WAS PREPARED BY ME OR UNDER MY
DIRECTION IN CONFORMANCE WITH THE LAND SURVEYORS ACT
ON July 31 1986

SIGNED: Richard L. Shulman

L.S. or R.C.E. No.: 3580



COUNTY SURVEYOR'S CERTIFICATE

THE CORNER RECORD WAS RECEIVED AUGUST 1, 1986
AND EXAMINED AND FILED AUGUST 8, 1986

BY: Henry M. Thraut
TITLE: DIRECTOR OF PUBLIC WORKS

DOCUMENT No. CR-86-007

STATEMENT ON BACK OF SHEET

YES ☐ NO ☒