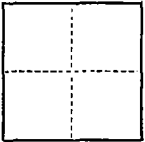


CORNER RECORD

COUNTY OF San Joaquin T. 1 South R. 6 East M.D.B. & MERIDIAN CALIFORNIA

CORNER TYPE: GOV'T. CORNER ☐ MEANDER ☐ RANCHO ☐ CONTROL ☐ OTHER ☒

CORNER IDENTIFICATION — DATE OF VISIT \_\_\_\_\_ 19\_\_\_\_



CORNER — LEFT AS FOUND ☐ FOUND AND TAGGED ☐ REESTABLISHED OBLITERATED CORNER ☒ REBUILT ☐

PHYSICAL DESCRIPTION OF CORNER FOUND; EVIDENCE AND METHOD USED TO IDENTIFY OR REESTABLISH

*N.A.*

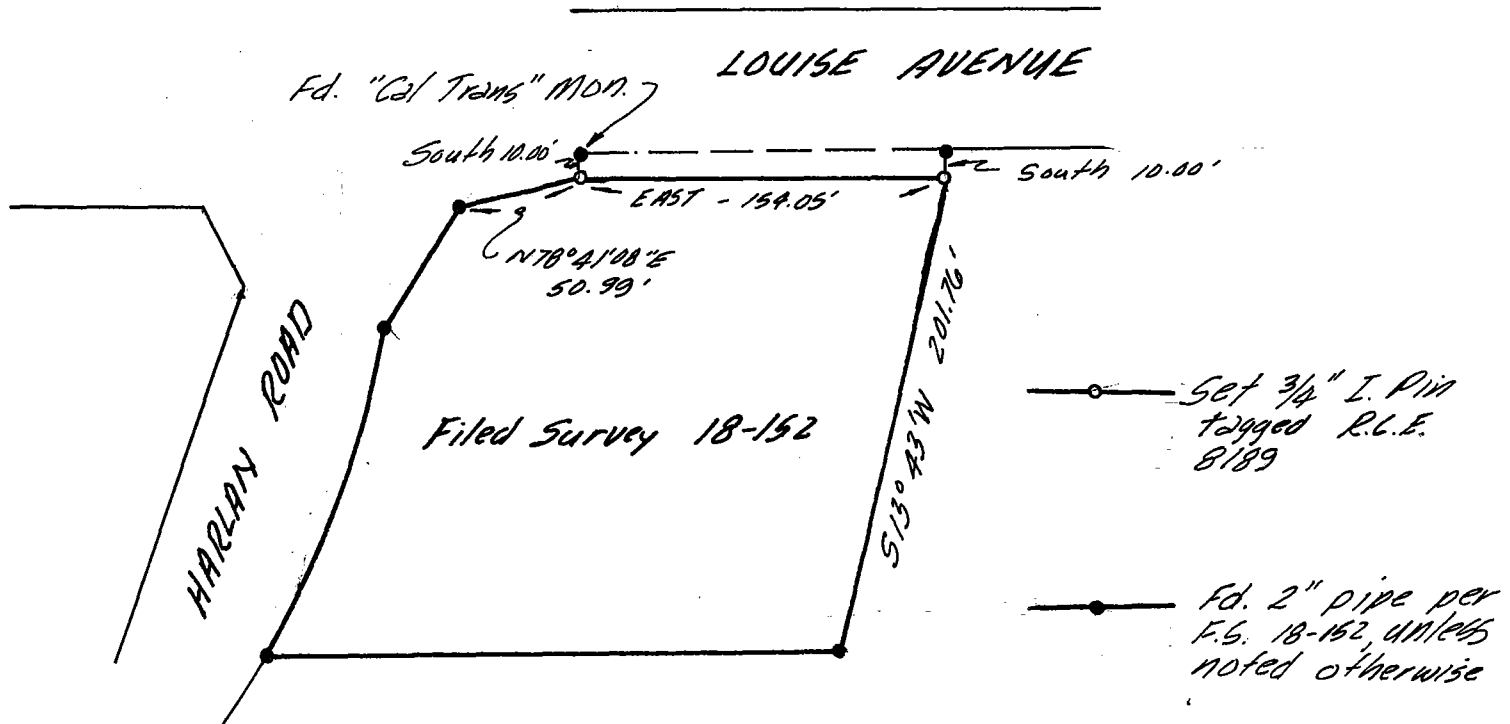
PHYSICAL DESCRIPTION OF MONUMENTS REBUILT OR PERPETUATED

*N.A.*

CALIFORNIA COORDINATE SYSTEM ORDER: FIRST ☐ SECOND ☐ THIRD ☐  
STATIONS USED: NGS (USC & GS) ☐ STATE ☐ COUNTY ☐ OTHER ☐ STATION \_\_\_\_\_ STATION \_\_\_\_\_  
ZONE \_\_\_\_\_ ELEVATION \_\_\_\_\_ NORTHINGS (Y) \_\_\_\_\_ EASTINGS (X) \_\_\_\_\_

(Fold)

SKETCH: (Include reference tie or witness points, remarks and topo of area)



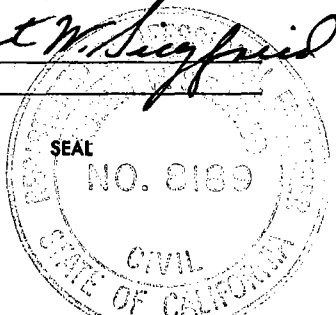
SURVEYOR'S CERTIFICATE

THIS CORNER RECORD WAS PREPARED BY ME OR UNDER MY DIRECTION IN CONFORMANCE WITH THE LAND SURVEYORS ACT ON Oct. 10, 1986

SIGNED: Robert W. Siegfried

L.S. or R.C.E. No. 8189

EXP. 9-30-88



COUNTY SURVEYOR'S CERTIFICATE

THE CORNER RECORD WAS RECEIVED OCT. 14, 1986 AND EXAMINED AND FILED OCT. 21, 1986

BY: Alvin M. Thurata  
TITLE: County Surveyor

DOCUMENT No. CR-86-006

STATEMENT ON BACK OF SHEET

YES ☐ NO ☒