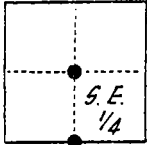


CORNER RECORD

COUNTY OF SAN JOAQUIN T. 3 N. R. 6 E. M. D. B. § MERIDIAN CALIFORNIA  
CORNER TYPE: GOV'T. CORNER ☐ MEANDER ☐ RANCHO ☐ CONTROL ☒ OTHER ☐  
CORNER IDENTIFICATION — DATE OF VISIT 10-16 1985



SECTION 2

CORNER — LEFT AS FOUND ☒ FOUND AND TAGGED ☐ REESTABLISHED OBLITERATED CORNER ☐ REBUILT ☒

*S. 1/4 Cor. - Found Railroad Spike per Record of Survey, Vol. 24, Pg. 64*  
*Center of Section - Found 2" x 2" Hub*

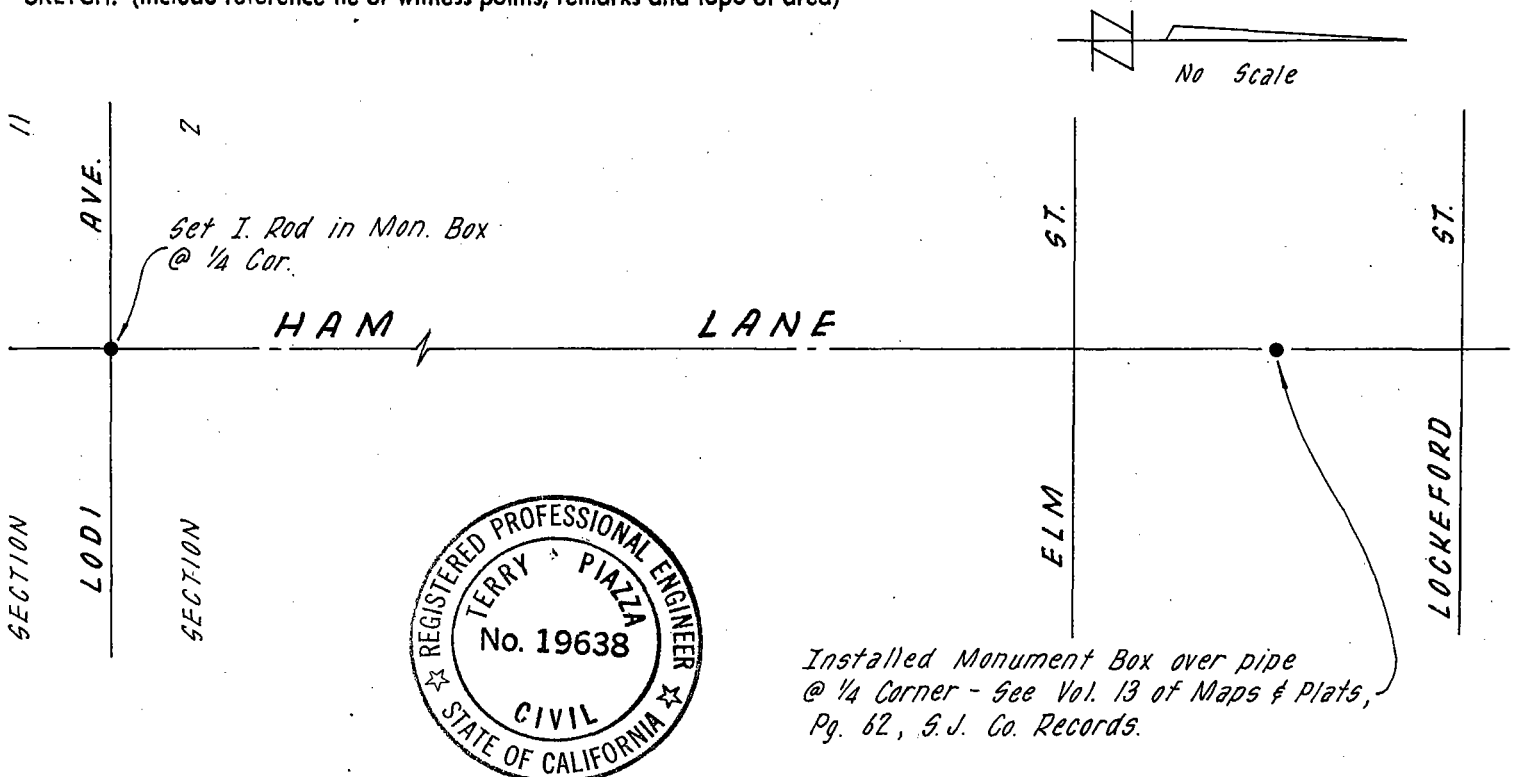
PHYSICAL DESCRIPTION OF MONUMENTS REBUILT OR PERPETUATED

*S. 1/4 Cor. - Set 3/4" Iron Rod in Standard Monument Box*  
*Center of Section - Installed Standard Monument Box and found pipe 18 inches deep*

CALIFORNIA COORDINATE SYSTEM ORDER: FIRST ☐ SECOND ☐ THIRD ☐  
STATIONS USED: NGS (USC & GS) ☐ STATE ☐ COUNTY ☐ OTHER ☐ STATION \_\_\_\_\_ STATION \_\_\_\_\_  
ZONE \_\_\_\_\_ ELEVATION \_\_\_\_\_ NORTHINGS (Y) \_\_\_\_\_ EASTINGS (X) \_\_\_\_\_

(Fold)

SKETCH: (Include reference tie or witness points, remarks and topo of area)



SURVEYOR'S CERTIFICATE

THIS CORNER RECORD WAS PREPARED BY ME OR UNDER MY DIRECTION IN CONFORMANCE WITH THE LAND SURVEYORS ACT ON 10-17 1985

SIGNED: Terry A. Piazza

L.S. or R.C.E. No.: 19638

SEAL

COUNTY SURVEYOR'S CERTIFICATE

THE CORNER RECORD WAS RECEIVED OCT. 28, 1985 AND EXAMINED AND FILED MARCH 3, 1986

BY Henry M. Thraats  
TITLE: County Surveyor

DOCUMENT No. CR-86-002

STATEMENT ON BACK OF SHEET

YES ☐ NO ☒