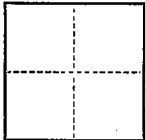


CORNER RECORD

CITY OF TRACY
COUNTY OF San Joaquin T. 2 South R. 5 East MDB&M MERIDIAN CALIFORNIA

CORNER TYPE: GOV'T. CORNER ☐ MEANDER ☐ RANCHO ☐ CONTROL ☐ OTHER ☒

CORNER IDENTIFICATION — DATE OF VISIT _____ 19____



Set north west corner Lot 9 Block 4 of "Lincoln Manor Subdivision" of the City of Tracy - Maps and Plats Volume 10, page 85 San Joaquin County Records.

CORNER — LEFT AS FOUND ☐ FOUND AND TAGGED ☐ REESTABLISHED OBLITERATED CORNER ☐ REBUILT ☐

PHYSICAL DESCRIPTION OF CORNER FOUND; EVIDENCE AND METHOD USED TO IDENTIFY OR REESTABLISH

PHYSICAL DESCRIPTION OF MONUMENTS REBUILT OR PERPETUATED

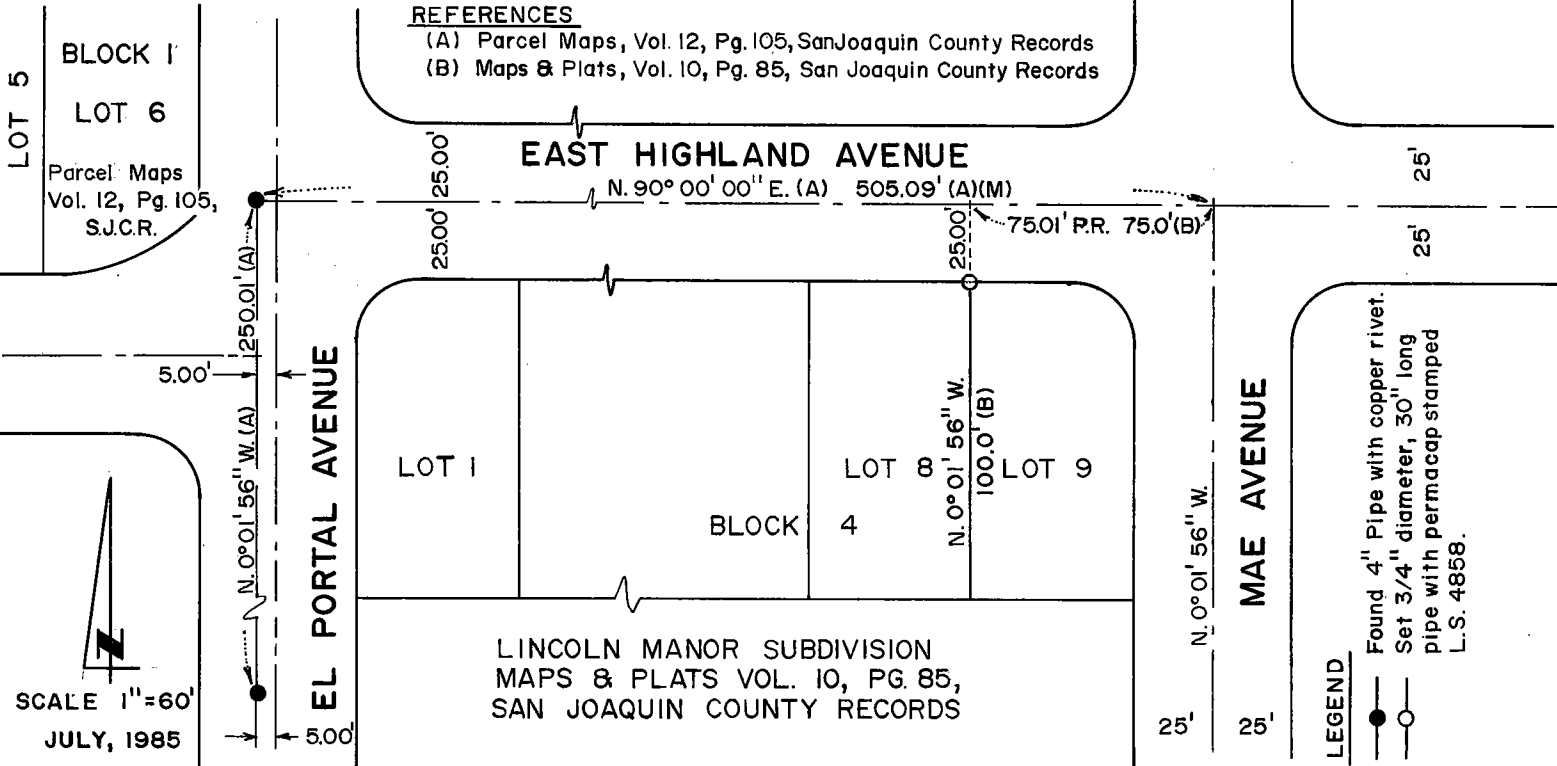
CALIFORNIA COORDINATE SYSTEM ORDER: FIRST ☐ SECOND ☐ THIRD ☐
STATIONS USED: NGS (USC & GS) ☐ STATE ☐ COUNTY ☐ OTHER ☐ STATION _____ STATION _____
ZONE _____ ELEVATION _____ NORTHINGS (Y) _____ EASTINGS (X) _____

(Fold)

SKETCH: (Include reference tie or witness points, remarks and topo of area)

REFERENCES

- (A) Parcel Maps, Vol. 12, Pg. 105, San Joaquin County Records
(B) Maps & Plats, Vol. 10, Pg. 85, San Joaquin County Records



SURVEYOR'S CERTIFICATE

THIS CORNER RECORD WAS PREPARED BY ME OR UNDER MY DIRECTION IN CONFORMANCE WITH THE LAND SURVEY ACT ON 7-15

SIGNED: Rm

L.S. or R.C.E. No.: 4858



COUNTY SURVEYOR'S CERTIFICATE

THE CORNER RECORD WAS RECEIVED AUG. 1, 1985 AND EXAMINED AND FILED March 3, 1986

BY: Henry M. Murata

TITLE: County Surveyor

DOCUMENT No. CR-86-001

STATEMENT ON BACK OF SHEET

YES ☐ NO ☒