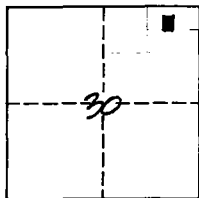


## CORNER RECORD

CITY OF RIPON  
 COUNTY OF SAN JOAQUIN, CALIFORNIA  
LOT 10 IN BLK. 7 OF SUNNYSIDE ADD'T. TO TOWN OF RIPON, MAP 4/40  
 SEC. 30, T. 2 S, R. 8 E, MDM MERIDIAN



## CORNER TYPE:

## COORDINATES

GOV'T. CORNER ☐ CONTROL ☐ N. \_\_\_\_\_  
 MEANDER ☐ PROPERTY ☒ E. \_\_\_\_\_  
 RANCHO ☐ OTHER ☐ ZONE \_\_\_\_\_

DATE OF SURVEY: Oct. 31, 1985 ELEV. \_\_\_\_\_

CORNER - LEFT AS FOUND ☐ FOUND AND TAGGED ☐ REESTABLISHED ☒ REBUILT ☐

PHYSICAL DESCRIPTION OF CORNER FOUND: EVIDENCE USED TO IDENTIFY THE CORNER \_\_\_\_\_

see map on page 2

PHYSICAL DESCRIPTION OF MONUMENTS REBUILT, PERPETUATED, OR RESET \_\_\_\_\_

see map on page 2

A CORNER RECORD MAY BE USED TO REPORT THE RECOVERY  
 OR PERPETUATION OF SURVEY MONUMENTS, OR TO SHOW THE REESTABLISHMENT  
 OF MONUMENTS WHERE FIELD CONDITIONS AGREE SUBSTANTIALLY WITH RECORD

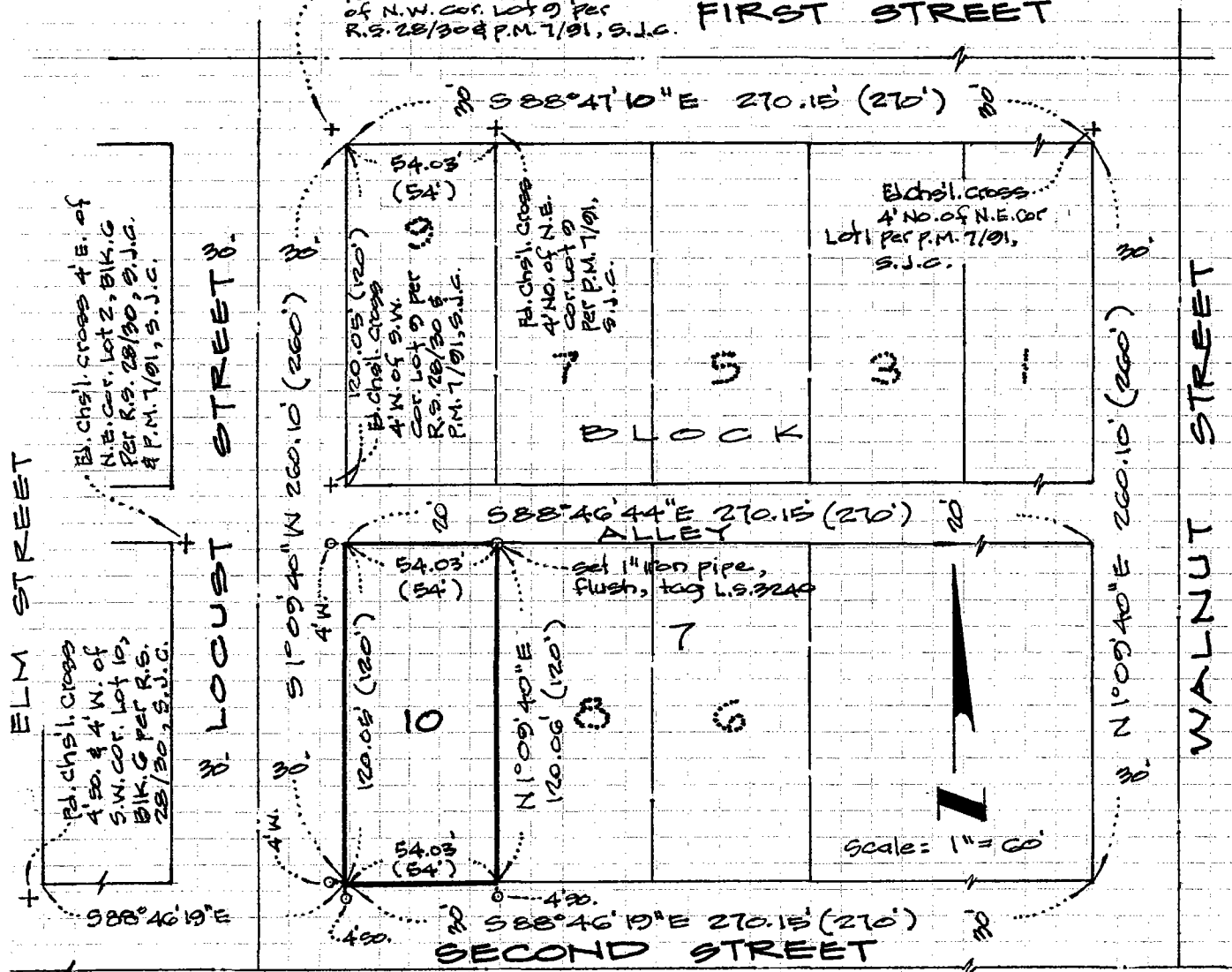
1. THE CORNER RECORD IS TO BE PREPARED BY A LICENSED LAND SURVEYOR OR REGISTERED CIVIL ENGINEER AND FILED WITH THE COUNTY SURVEYOR (OR COUNTY ENGINEER) OF THE COUNTY IN WHICH THE CORNER IS LOCATED.
2. A CORNER RECORD SHALL BE FILED WITHIN 90 DAYS OF THE DATE OF THE RECOVERY, USE OR REESTABLISHMENT OF A CORNER UNLESS THE CORNER IS TO BE SHOWN ON A RECORD OF SURVEY, PARCEL OR FINAL MAP DERIVED FROM THE SURVEY WHICH USED OR LOCATED SAID CORNER.
3. A CORNER RECORD MAY BE FILED TO SHOW THE PERPETUATION OF ANY EXISTING OR OBLITERATED CORNER OF THE SURVEY OF THE PUBLIC LANDS, AS SAID CORNERS ARE DEFINED IN THE "MANUAL OF INSTRUCTIONS FOR THE SURVEY OF PUBLIC LANDS OF THE UNITED STATES" OF THE BUREAU OF LAND MANAGEMENT. THE IDENTIFICATION OF SUCH CORNERS SHALL BE IF POSSIBLE IN ACCORDANCE WITH THE SYSTEM OF IDENTIFICATION GIVEN BY SAID MANUAL OF INSTRUCTIONS.
4. AT THE OPTION OF THE SURVEYOR OR ENGINEER, A CORNER RECORD MAY BE FILED FOR PROPERTY CORNERS, PROPERTY CONTROLLING CORNERS, REFERENCE MONUMENTS OR ACCESSORIES TO PROPERTY CORNERS WHEN THE COUNTY SURVEY OR COUNTY ENGINEER DETERMINES THAT NONE OF THE CONDITIONS REQUIRING A RECORD OF SURVEY EXIST AS OUTLINED IN SECTION 8762 OF THE LAND SURVEYORS ACT.
5. THE COUNTY SURVEYOR OR COUNTY ENGINEER SHALL EXAMINE THE CORNER RECORD WITHIN 20 DAYS FOR CONFORMANCE WITH SECTION 8773 OF THE LAND SURVEYORS ACT. UPON DETERMINATION THAT THE ABOVE LISTED CONDITIONS ARE SATISFIED AND THAT THE INFORMATION REQUIRED ELSEWHERE ON THIS FORM IS COMPLETE. THE COUNTY SURVEYOR OR ENGINEER SHALL FILE AND INDEX THE CORNER RECORD AND NOTIFY THE SURVEYOR/ENGINEER OF SUCH FILING.
6. CORNER RECORDS SUBMITTED FOR SURVEYS WHICH, UNDER SECTION 8762 OF THE LAND SURVEYORS ACT, REQUIRE A RECORD OF SURVEY SHALL BE RETURNED TO THE SURVEYOR OR ENGINEER TOGETHER WITH A STATEMENT OF THE REASON FOR SUCH RETURN.
7. CALIFORNIA COORDINATE SYSTEM DATA MAY BE SHOWN, BUT SHOULD BE ACCOMPANIED BY AN IDENTIFICATION OF THE SOURCE OF SUCH INFORMATION.
8. A SKETCH SHOWING REFERENCE TIES TO ACCESSORIES OR OTHER IDENTIFIABLE OBJECTS IN THE VICINITY OF THE CORNER SHALL BE PROVIDED WHERE APPROPRIATE. PHOTOGRAPHS AND/OR TOPOGRAPHY OF THE MONUMENT AND SURROUNDING AREA ARE ENCOURAGED.

CITY OF RIPON  
COUNTY OF SAN JOAQUIN, CALIFORNIA

SUNNYSIDE ADDITION TO THE TOWN OF RIPON, Vol. 4 of Maps & Plats, Pg. 46

Ed. chsl. cross 4' E. of  
of N.W. cor. Lot 9 per  
R.S. 28/30 & P.M. 7/91, S.J.C.

FIRST STREET



1. o Denotes lead & L.S. 3240 tag set in sidewalk on offsets indicated, unless otherwise noted
2. Basis of bearings taken from Locust st. per R.S. 28/30, S.J.C. - N 1° 09' 40" E
3. ( ) Parenthesis denote record distance per Vol. 4 of M & P, Pg. 46

SURVEYOR'S CERTIFICATE

COUNTY SURVEYOR'S CERTIFICATE

THIS CORNER RECORD WAS PREPARED BY ME OR

THIS CORNER RECORD WAS RECEIVED NOV. 18

UNDER MY DIRECTION IN CONFORMANCE WITH THE

19 85

LAND SURVEYORS ACT ON NOV. 15, 1985

AND EXAMINED AND FILED

July 25, 86

BY:

Chief Debrahmet

TITLE:

Chief Dep. Co. Surveyor

L.S. & C.E. NO.: L.S. 3240

COUNTY SURVEYOR'S STATEMENT: \_\_\_\_\_

DOCUMENT NO. CR-85-001