

## CORNER RECORD

COUNTY OF San Joaquin T. 3N R. 8E M.D.B. & M. MERIDIAN CALIFORNIA  
CORNER TYPE: GOV'T. CORNER ☒ MEANDER ☐ RANCHO ☐ CONTROL ☐ OTHER ☐  
CORNER IDENTIFICATION — DATE OF VISIT June 24, 1981



CORNER — LEFT AS FOUND ☒ FOUND AND TAGGED ☐ REESTABLISHED OBLITERATED CORNER ☐ REBUILT ☐

**PHYSICAL DESCRIPTION OF CORNER FOUND; EVIDENCE AND METHOD USED TO IDENTIFY OR REESTABLISH**

Bolt & washer - 9 P.M. 41

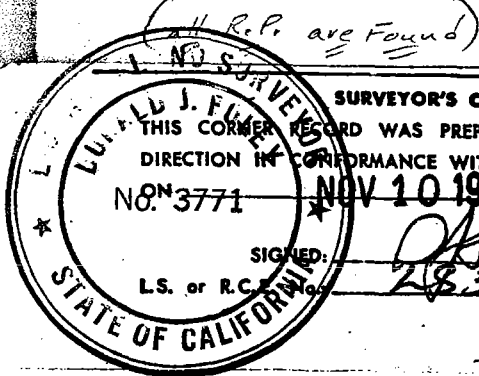
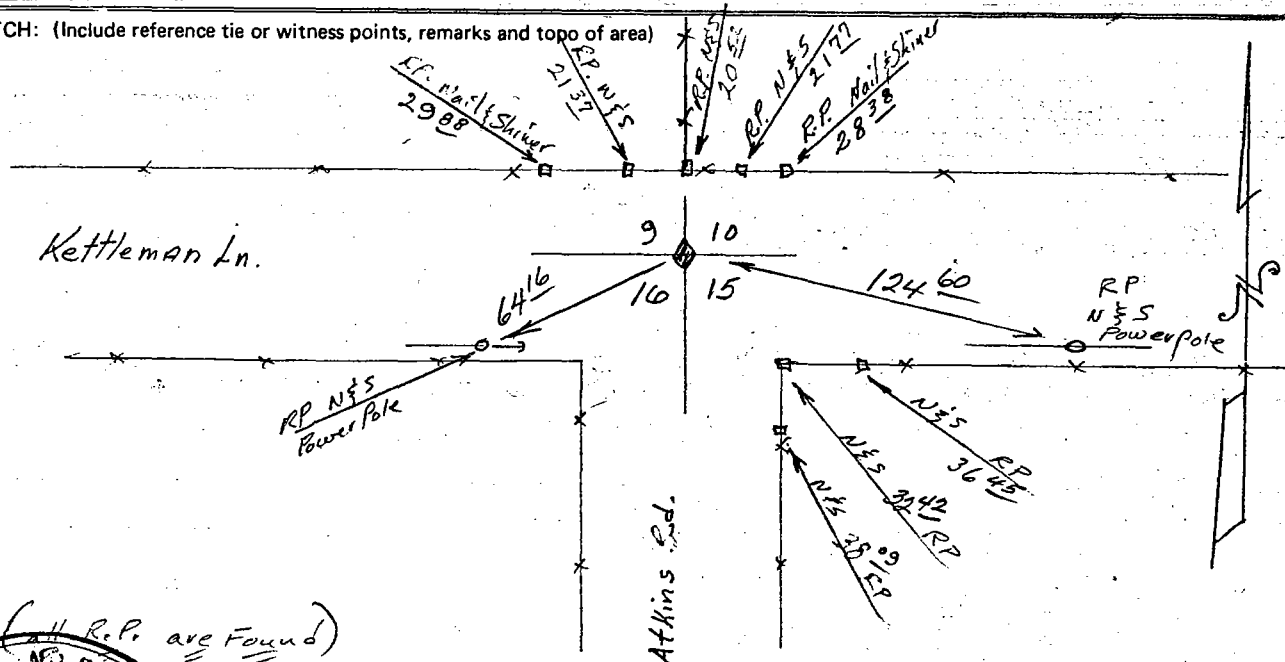
**PHYSICAL DESCRIPTION OF MONUMENTS REBUILT OR PERPETUATED**

CORNER LOCATED BY P.G.&E. SURVEY  
BUT NOT VERIFIED

PACIFIC GAS AND ELECTRIC CO.  
LAND DEPT. JOB LD 4783

CALIFORNIA COORDINATE SYSTEM ORDER: FIRST ☐ SECOND ☐ THIRD ☐  
STATIONS USED: NGS (USC & GS) ☐ STATE ☐ COUNTY ☐ OTHER ☐ STATION \_\_\_\_\_ STATION \_\_\_\_\_  
ZONE \_\_\_\_\_ ELEVATION \_\_\_\_\_ NORTHINGS (Y) \_\_\_\_\_ EASTINGS (X) \_\_\_\_\_

**SKETCH:** (Include reference tie or witness points, remarks and topo of area)



## SURVEYOR'S CERTIFICATE

THIS CORNER RECORD WAS PREPARED BY ME OR UNDER MY  
DIRECTION IN CONFORMANCE WITH THE LAND SURVEYORS ACT  
NO. 3771 NOV 10 1981 19

**SIGNED:**

**L.S. or R.C.** ☒ **Yes**

SEAL

### COUNTY SURVEYOR'S CERTIFICATE

THE CORNER RECORD WAS RECEIVED Nov. 19 1981  
AND EXAMINED AND FILED Nov. 23, 1981

BY: Robert J. Schriener

TITLE: Chief Deputy County Surveyor

DOCUMENT No. CR-81-001

**STATEMENT ON BACK OF SHEET**

**YES** ☐

NO 