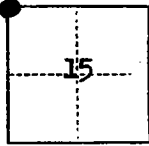


CORNER RECORD

COUNTY OF SAN JOAQUIN T. 3N R. 8N MDB& MERIDIAN CALIFORNIA
 CORNER TYPE: GOV'T. CORNER ☒ MEANDER ☐ RANCHO ☐ CONTROL ☐ OTHER ☐
 CORNER IDENTIFICATION — DATE OF VISIT May 5 19 76



CORNER — LEFT AS FOUND ☐ FOUND AND TAGGED ☒ REESTABLISHED OBLITERATED CORNER ☐ REBUILT ☐

PHYSICAL DESCRIPTION OF CORNER FOUND; EVIDENCE AND METHOD USED TO IDENTIFY OR REESTABLISH

Found 1 inch iron pin 17 feet down at intersection of Kettleman Lane and Atkins Rd.
 Set tag L.S. 3576. Set 1 inch X 2 inch flush on top of pin and set 4 shiners E-W and N-S on pavement 4 feet apart. Also set R.P.'s as shown in sketch. Used plat of Lockeford Tokay Colony. File in Volume 6, Page 16.

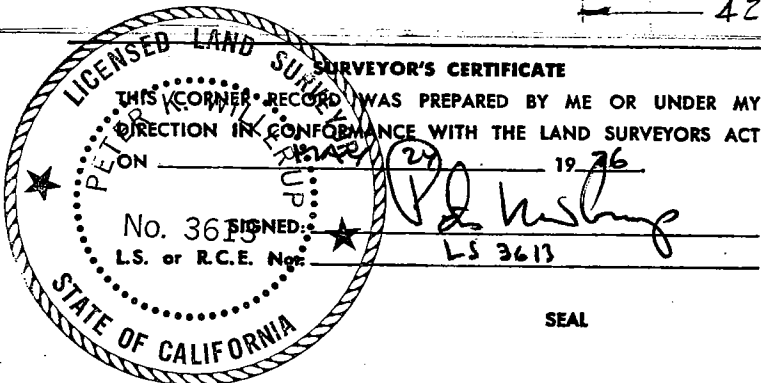
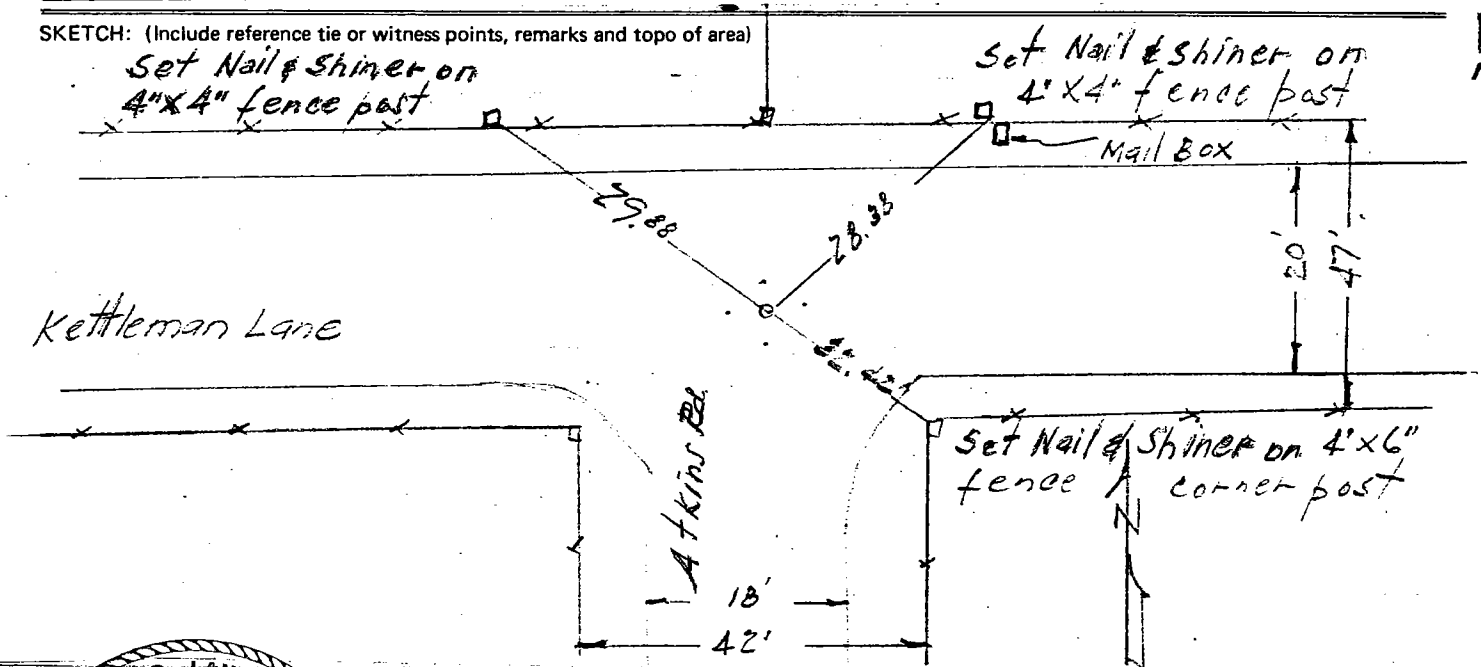
PHYSICAL DESCRIPTION OF MONUMENTS REBUILT OR PERPETUATED

CORNER LOCATED BY P.G.&E. SURVEY
 BUT NOT VERIFIED

PACIFIC GAS AND ELECTRIC CO.
 LAND DEPT. JOB 183341

CALIFORNIA COORDINATE SYSTEM ORDER: FIRST ☐ SECOND ☐ THIRD ☐
 STATIONS USED: NGS (USC & GS) ☐ STATE ☐ COUNTY ☐ OTHER ☐ STATION _____ STATION _____
 ZONE _____ ELEVATION _____ NORTHINGS (Y) _____ EASTINGS (X) _____

SKETCH: (Include reference tie or witness points, remarks and topo of area)



COUNTY SURVEYOR'S CERTIFICATE

THE CORNER RECORD WAS RECEIVED May 28, 19 76
 AND EXAMINED AND FILED June 3, 19 76
 BY: P. L. Hush
 TITLE: Chief Deputy County Surveyor
 DOCUMENT NO. C.R. - 76 - 005

STATEMENT ON BACK OF SHEET

YES ☐ NO ☒