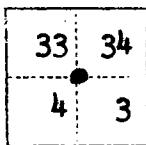


# CORNER RECORD

COUNTY OF San Joaquin T. 4N R. 7E MDB& MERIDIAN CALIFORNIA  
 CORNER TYPE: GOV'T. CORNER ☒ MEANDER ☐ RANCHO ☐ CONTROL ☐ OTHER ☐  
 CORNER IDENTIFICATION — DATE OF VISIT Dec. 5 19 76  
5



T4N  
 T3N R7E.

CORNER — LEFT AS FOUND ☒ FOUND AND TAGGED ☐ REESTABLISHED OBLITERATED CORNER ☐ REBUILT ☐

PHYSICAL DESCRIPTION OF CORNER FOUND, EVIDENCE AND METHOD USED TO IDENTIFY OR REESTABLISH

**Found. 2" Iron Pipe 20 down - 3/4" Iron Pin with 2"OD. Brass Washer at surface stamped S.J. Co. Surveyor LS 2239**

PHYSICAL DESCRIPTION OF MONUMENTS REBUILT OR PERPETUATED

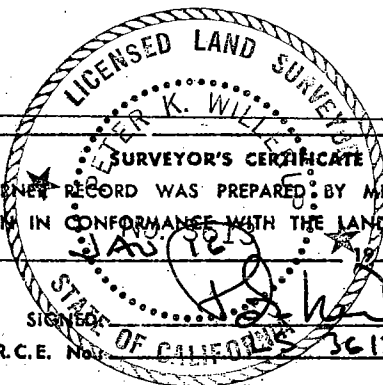
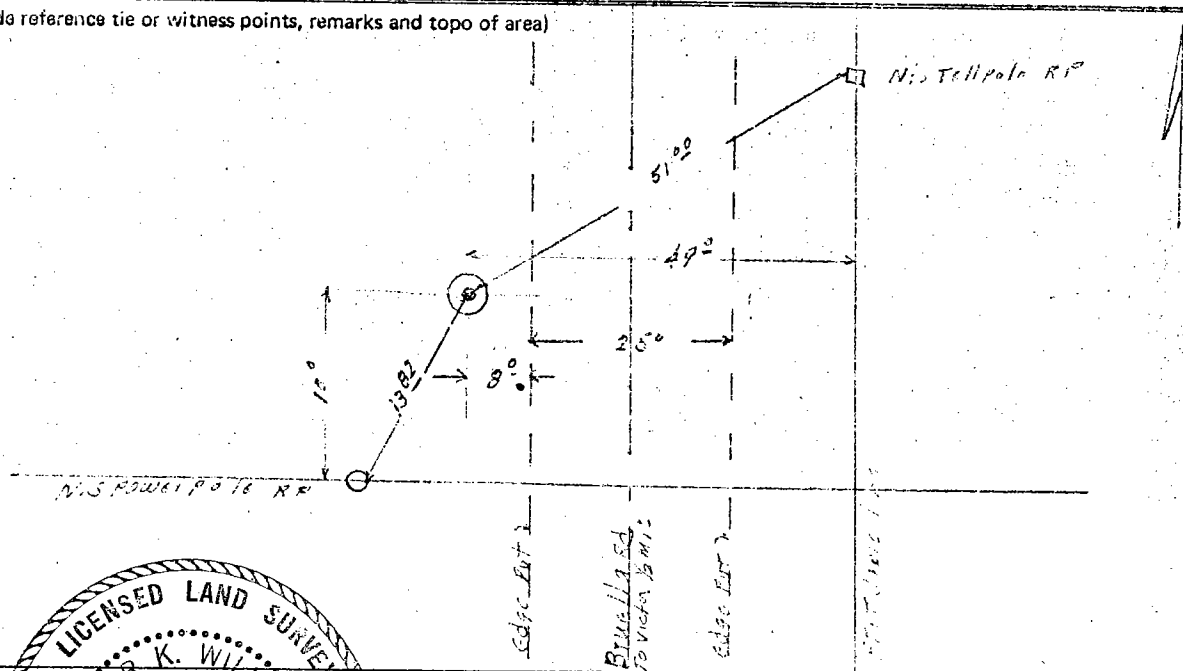
**Left as found**

CORNER LOCATED BY P.G.&E. SURVEY  
 BUT NOT VERIFIED

PACIFIC GAS AND ELECTRIC CO.  
 LAND DEPT. JOB ED 2438

CALIFORNIA COORDINATE SYSTEM ORDER: FIRST ☐ SECOND ☐ THIRD ☐  
 STATIONS USED: NGS (USC & GS) ☐ STATE ☐ COUNTY ☐ OTHER ☐ STATION \_\_\_\_\_ STATION \_\_\_\_\_  
 ZONE \_\_\_\_\_ ELEVATION \_\_\_\_\_ NORTHINGS (Y) \_\_\_\_\_ EASTINGS (X) \_\_\_\_\_

SKETCH: (Include reference tie or witness points, remarks and topo of area)



THIS CORNER RECORD WAS PREPARED BY ME OR UNDER MY  
 DIRECTION IN CONFORMANCE WITH THE LAND SURVEYORS ACT  
 ON Feb. 1976  
 SIGNED [Signature]  
 L.S. or R.C.E. No. 3612

SEAL

COUNTY SURVEYOR'S CERTIFICATE

THE CORNER RECORD WAS RECEIVED Feb. 19 76  
 AND EXAMINED AND FILED 19  
 BY: Chief Deput. Surveyor  
 TITLE: Chief Deput. Co. Surveyor  
 DOCUMENT No. CR-76-004  
 STATEMENT ON BACK OF SHEET YES ☐ NO ☒