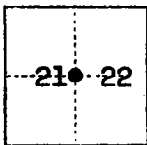


# CORNER RECORD

COUNTY OF San Joaquin T. 2S R. 5E M.D.B. & MERIDIAN CALIFORNIA  
 CORNER TYPE: GOV'T. CORNER ☒ MEANDER ☐ RANCHO ☐ CONTROL ☐ OTHER ☐  
 CORNER IDENTIFICATION — DATE OF VISIT 12-19 19 75



West 1/4 Cor. Section 22

CORNER — LEFT AS FOUND ☒ FOUND AND TAGGED ☐ REESTABLISHED OBLITERATED CORNER ☐ REBUILT ☐

PHYSICAL DESCRIPTION OF CORNER FOUND; EVIDENCE AND METHOD USED TO IDENTIFY OR REESTABLISH

1/2" Pipe in monument well in the center line of Grant Line Road.  
 Approximately 10' Westerly of railroad tracks

PHYSICAL DESCRIPTION OF MONUMENTS REBUILT OR PERPETUATED

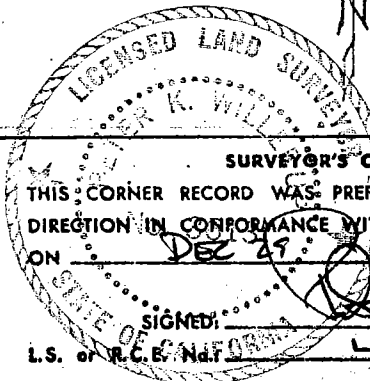
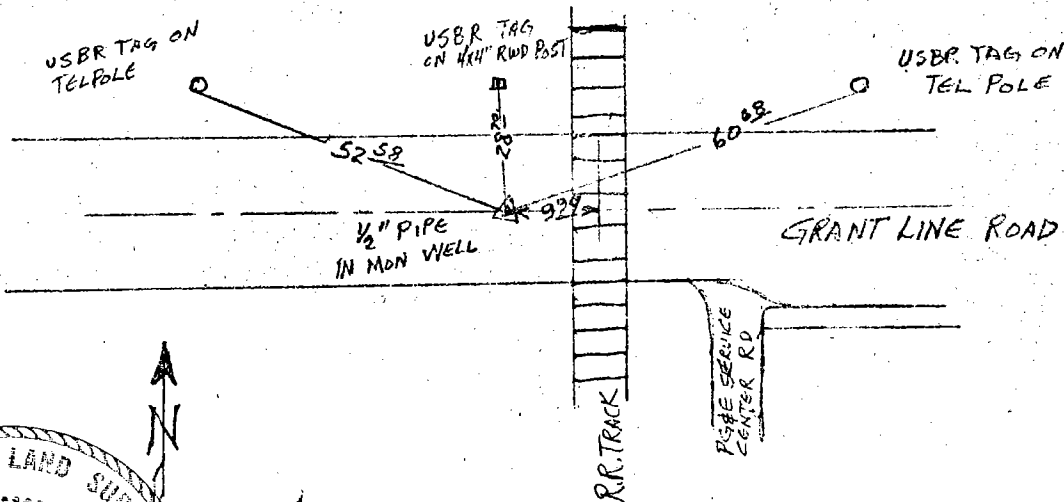
Left as found.

CORNER LOCATED BY P.G.&E. SURVEY  
 BUT NOT VERIFIED

PACIFIC GAS AND ELECTRIC CO.  
 LAND DEPT. JOB 180328

CALIFORNIA COORDINATE SYSTEM ORDER: FIRST ☐ SECOND ☐ THIRD ☐  
 STATIONS USED: NGS (USC & GS) ☐ STATE ☐ COUNTY ☐ OTHER ☐ STATION \_\_\_\_\_ STATION \_\_\_\_\_  
 ZONE \_\_\_\_\_ ELEVATION \_\_\_\_\_ NORTHINGS (Y) \_\_\_\_\_ EASTINGS (X) \_\_\_\_\_

SKETCH: (Include reference tie or witness points, remarks and topo of area)



## SURVEYOR'S CERTIFICATE

THIS CORNER RECORD WAS PREPARED BY ME OR UNDER MY  
 DIRECTION IN CONFORMANCE WITH THE LAND SURVEYORS ACT  
 ON DEC 29 19 75  
 SIGNED: [Signature]  
 L.S. of P.G.E. No. 3613

## COUNTY SURVEYOR'S CERTIFICATE

THE CORNER RECORD WAS RECEIVED Feb. 19 76  
 AND EXAMINED AND FILED 19  
 BY: [Signature]  
 TITLE: Chief Eng. Co. Surveyor  
 DOCUMENT No. CR-76-003

STATEMENT ON BACK OF SHEET

YES ☐ NO ☒