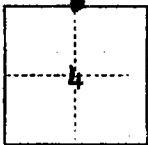


# CORNER RECORD

COUNTY OF San Joaquin T. 2N R. 7E MBD& MERIDIAN CALIFORNIA  
 CORNER TYPE: GOV'T. CORNER ☒ MEANDER ☐ RANCHO ☐ CONTROL ☐ OTHER ☐  
 CORNER IDENTIFICATION — DATE OF VISIT December 9 19 75



CORNER — LEFT AS FOUND ☐ FOUND AND TAGGED ☐ REESTABLISHED OBLITERATED CORNER ☐ REBUILT ☐

PHYSICAL DESCRIPTION OF CORNER FOUND, EVIDENCE AND METHOD USED TO IDENTIFY OR REESTABLISH

Fnd. 1" QD. Iron Pin 0<sup>5</sup> below surface  
 From City of Victor North 0.5 miles thence West on 8' dirt road 0.25  
 miles  $\frac{1}{2}$  to corner

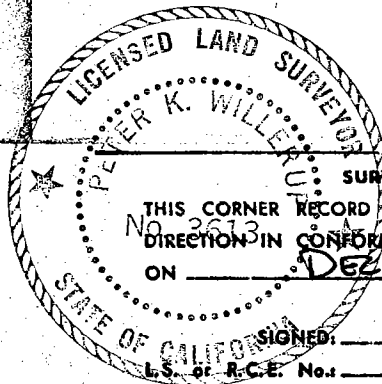
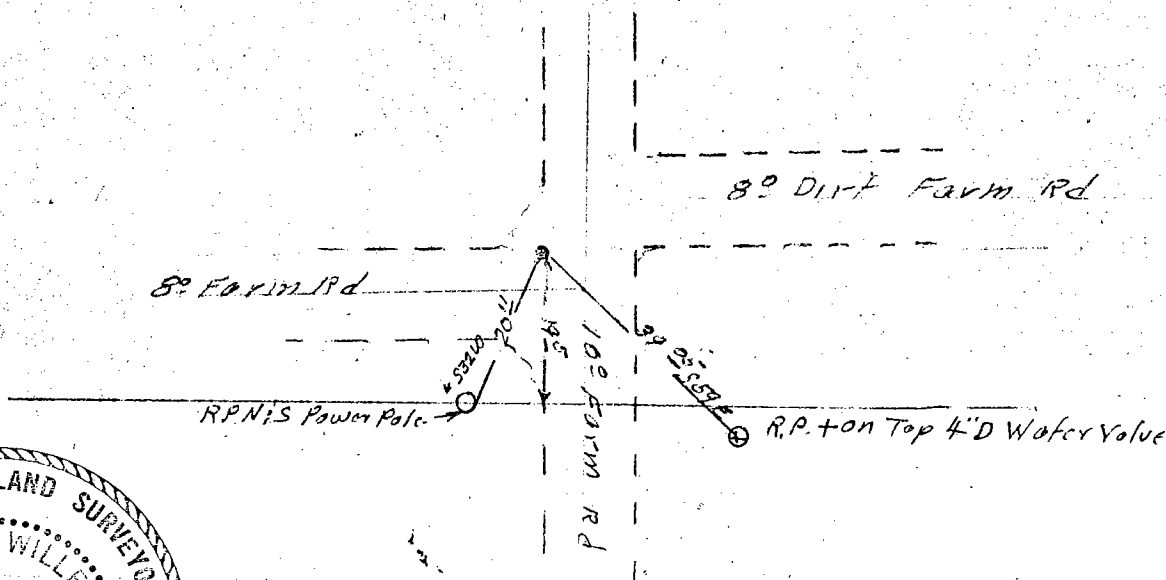
PHYSICAL DESCRIPTION OF MONUMENTS REBUILT OR PERPETUATED

CORNER LOCATED BY P.G.&E. SURVEY  
 BUT NOT VERIFIED

PACIFIC GAS AND ELECTRIC CO.  
 LAND DEPT. JOB ED 8498

CALIFORNIA COORDINATE SYSTEM ORDER: FIRST ☐ SECOND ☐ THIRD ☐  
 STATIONS USED: NGS (USC & GS) ☐ STATE ☐ COUNTY ☐ OTHER ☐ STATION \_\_\_\_\_ STATION \_\_\_\_\_  
 ZONE \_\_\_\_\_ ELEVATION \_\_\_\_\_ NORTHINGS (Y) \_\_\_\_\_ EASTINGS (X) \_\_\_\_\_

SKETCH: (Include reference tie or witness points, remarks and topo of area)



## SURVEYOR'S CERTIFICATE

THIS CORNER RECORD WAS PREPARED BY ME OR UNDER MY  
 DIRECTION IN CONFORMANCE WITH THE LAND SURVEYORS ACT  
 ON DEC 29 19 75

SIGNED:

LS 3613

SEAL

## COUNTY SURVEYOR'S CERTIFICATE

THE CORNER RECORD WAS RECEIVED Feb. 19 76  
 AND EXAMINED AND FILED

BY: Chief Deane  
 TITLE: Chief Insp. C. Surveyor

DOCUMENT No. CR-76-002

STATEMENT ON BACK OF SHEET

YES ☐ NO ☒