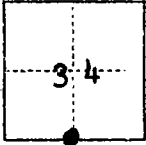


CORNER RECORD

COUNTY OF San Joaquin T. 4N R. 7E MBD& MERIDIAN CALIFORNIA
 CORNER TYPE: GOV'T. CORNER ☐ MEANDER ☐ RANCHO ☐ CONTROL ☐ OTHER ☐
 CORNER IDENTIFICATION — DATE OF VISIT December 4 19 75



CORNER — LEFT AS FOUND ☒ FOUND AND TAGGED ☐ REESTABLISHED OBLITERATED CORNER ☐ REBUILT ☐

PHYSICAL DESCRIPTION OF CORNER FOUND, EVIDENCE AND METHOD USED TO IDENTIFY OR REESTABLISH

1 1/4" D. Steel Auto Axel

PHYSICAL DESCRIPTION OF MONUMENTS REBUILT OR PERPETUATED

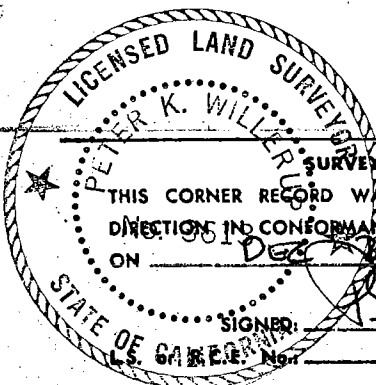
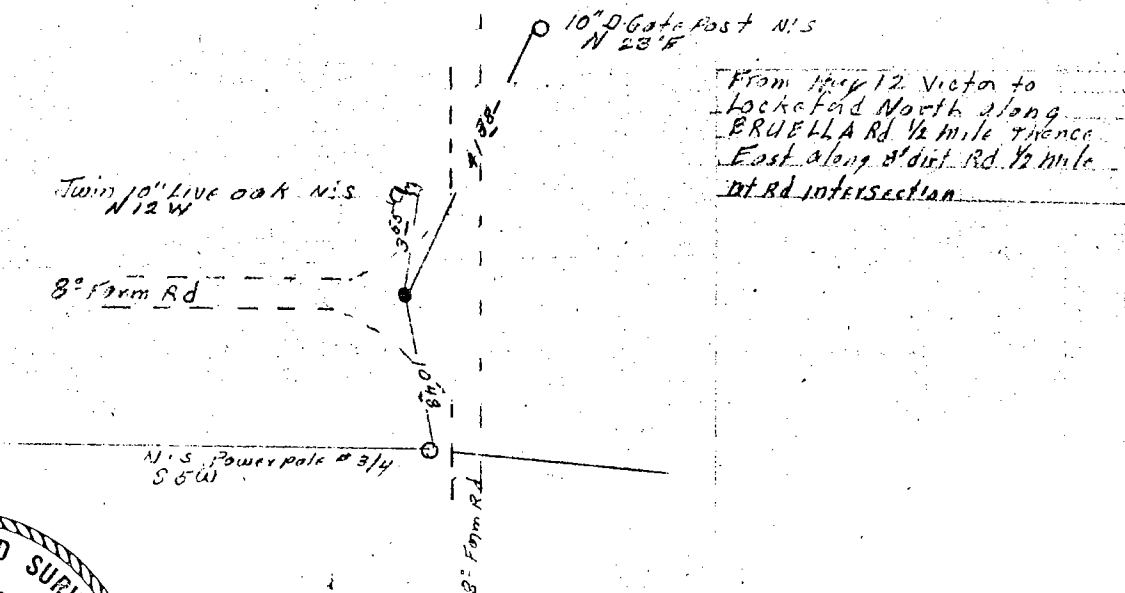
Left as found

CORNER LOCATED BY P.G.&E. SURVEY
 BUT NOT VERIFIED

PACIFIC GAS AND ELECTRIC CO.
 LAND DEPT. JOB ED 8498

CALIFORNIA COORDINATE SYSTEM ORDER: FIRST ☐ SECOND ☐ THIRD ☐
 STATIONS USED: NGS (USC & GS) ☐ STATE ☐ COUNTY ☐ OTHER ☐ STATION _____ STATION _____
 ZONE _____ ELEVATION _____ NORTHINGS (Y) _____ EASTINGS (X) _____

SKETCH: (Include reference tie or witness points, remarks and topo of area)



SURVEYOR'S CERTIFICATE
 THIS CORNER RECORD WAS PREPARED BY ME OR UNDER MY
 DIRECTION IN CONFORMANCE WITH THE LAND SURVEYORS ACT
 ON Dec 4 19 75
 SIGNED: [Signature]
 L.S. 3613

COUNTY SURVEYOR'S CERTIFICATE
 THE CORNER RECORD WAS RECEIVED Feb. 19 76
 AND EXAMINED AND FILED _____ 19 _____
 BY: [Signature]
 TITLE: Chief Dep. Co. Surveyor
 DOCUMENT No. CR-76-001
 STATEMENT ON BACK OF SHEET YES ☐ NO ☒