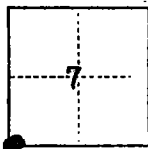


# CORNER RECORD

COUNTY OF San Joaquin T. 3N R. 8E MDB#            MERIDIAN            CALIFORNIA  
 CORNER TYPE: GOV'T. CORNER ☐ MEANDER ☐ RANCHO ☐ CONTROL ☐ OTHER ☒  
 CORNER IDENTIFICATION — DATE OF VISIT Oct. 28 19 75



SW Cor. Sec. 7

CORNER — LEFT AS FOUND ☒ FOUND AND TAGGED ☐ REESTABLISHED OBLITERATED CORNER ☐ REBUILT ☐

PHYSICAL DESCRIPTION OF CORNER FOUND; EVIDENCE AND METHOD USED TO IDENTIFY OR REESTABLISH

Fnd.  $1\frac{1}{4}$ " D. Rebar in 6" D Hand Hole

PHYSICAL DESCRIPTION OF MONUMENTS REBUILT OR PERPETUATED

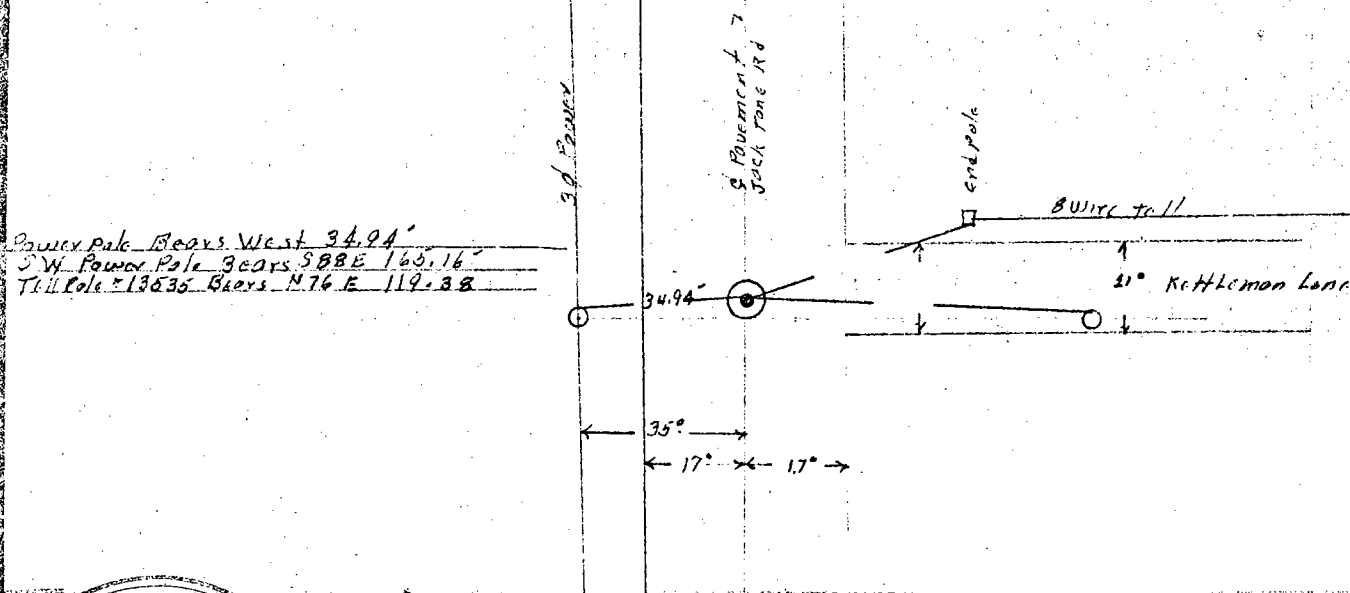
CORNER LOCATED BY P.G.&E. SURVEY  
 BUT NOT VERIFIED

Left as found

PACIFIC GAS AND ELECTRIC CO.  
 LAND DEPT. JOB GM183341

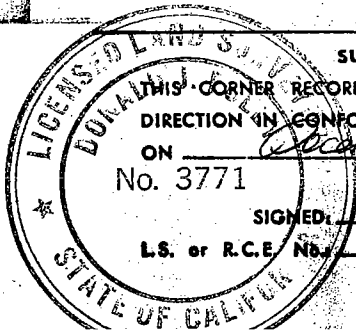
CALIFORNIA COORDINATE SYSTEM ORDER: FIRST ☐ SECOND ☐ THIRD ☐  
 STATIONS USED: NGS (USC & GS) ☐ STATE ☐ COUNTY ☐ OTHER ☐ STATION            STATION             
 ZONE            ELEVATION            NORTHINGS (Y)            EASTINGS (X)           

SKETCH: (Include reference tie or witness points, remarks and topo of area)



## SURVEYOR'S CERTIFICATE

THIS CORNER RECORD WAS PREPARED BY ME OR UNDER MY  
 DIRECTION IN CONFORMANCE WITH THE LAND SURVEYORS' ACT  
 ON December 2 19 75  
 No. 3771  
 SIGNED: [Signature]  
 L.S. or R.C.E. No. LS 3771



SEAL

## COUNTY SURVEYOR'S CERTIFICATE

THE CORNER RECORD WAS RECEIVED Dec. 5 19 75  
 AND EXAMINED AND FILED            19             
 BY: [Signature]  
 TITLE: Chief Dep. Co. Surveyor  
 DOCUMENT No. CR-75-010  
 STATEMENT ON BACK OF SHEET

YES ☐ NO ☒