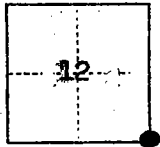


CORNER RECORD

COUNTY OF San Joaquin T. 3N R. 7E MDB& MERIDIAN CALIFORNIA
 CORNER TYPE: GOV'T. CORNER ☐ MEANDER ☐ RANCHO ☐ CONTROL ☐ OTHER ☒
 CORNER IDENTIFICATION — DATE OF VISIT Oct. 28 19 75



SE. Cor. Sec. 12

CORNER — LEFT AS FOUND ☒ FOUND AND TAGGED ☐ REESTABLISHED OBLITERATED CORNER ☐ REBUILT ☐

PHYSICAL DESCRIPTION OF CORNER FOUND; EVIDENCE AND METHOD USED TO IDENTIFY OR REESTABLISH

Fnd. P.K. Nail 251.0 North of SW Cor Sec. 7, t3N R8E

PHYSICAL DESCRIPTION OF MONUMENTS REBUILT OR PERPETUATED

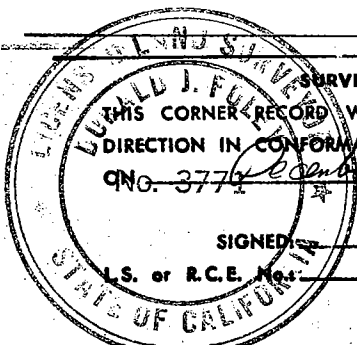
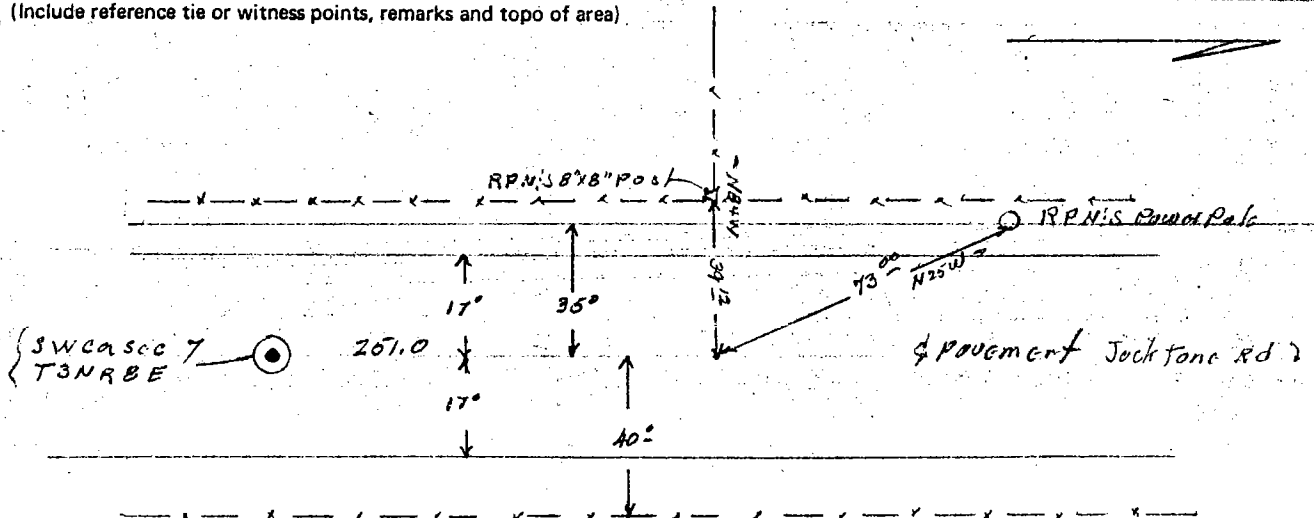
Left as found

PACIFIC GAS AND ELECTRIC CO.
 LAND DEPT. JOB GM183341

CORNER LOCATED BY P.G.&E. SURVEY
 BUT NOT VERIFIED

CALIFORNIA COORDINATE SYSTEM ORDER: FIRST ☐ SECOND ☐ THIRD ☐
 STATIONS USED: NGS (USC & GS) ☐ STATE ☐ COUNTY ☐ OTHER ☐ STATION _____ STATION _____
 ZONE _____ ELEVATION _____ NORTHINGS (Y) _____ EASTINGS (X) _____

SKETCH: (Include reference tie or witness points, remarks and topo of area)



SURVEYOR'S CERTIFICATE

THIS CORNER RECORD WAS PREPARED BY ME OR UNDER MY DIRECTION IN CONFORMANCE WITH THE LAND SURVEYORS ACT

QNo. 3771 October 2 19 75

SIGNED

L.S. or R.C.E. No. 3771

SEAL

COUNTY SURVEYOR'S CERTIFICATE

THE CORNER RECORD WAS RECEIVED Dec. 5 19 75
 AND EXAMINED AND FILED 19 75

BY: Robert T. Schumaker
 TITLE: Chief Dep. Co. Surveyor

DOCUMENT No. CR-75-008

STATEMENT ON BACK OF SHEET

YES ☐ NO ☒