

CORNER RECORD

Agency Index CR-26-142

Document Number _____

City of STOCKTON

County of SAN JOAQUIN, California

Brief Legal Description CAYUGA DRIVE BETWEEN HUDSON DRIVE AND CAYUGA COURT



T.2N., R.6E

CORNER TYPE

- Government Corner Control
 Meander Property
 Rancho Other

Date of Survey 10-21-25

COORDINATES (Optional)

N. _____ E. _____

Elevation _____

Units Metric U.S. Survey Foot

Horizontal Datum _____

Zone _____ Epoch Date _____

Vertical Datum _____

Complies with Public Resources Code §§8801-8819

Complies with Public Resources Code §§8890-8902

PLS Act Ref: 8765(d) 8771 8773 Other:

Corner/Monument: Left as found Established Rebuilt Pre-Construction
 Found and tagged Reestablished Referenced Post-Construction

Narrative of corner identified and monument as found, set, reset, replaced, or removed:

See sheet #2 for description (s):

FOUND ONE (1) CHISELED "+" IN WALK, NO TAG; SET FOUR (4) CONCRETE NAILS WITH BRASS TAG "LS 9857" AS WITNESS CORNERS, ALL AS SHOWN ON SHEET 2.

SURVEYOR'S STATEMENT

This Corner Record was prepared by me or under my direction in conformance with the Professional Land Surveyors' Act on MARCH 19, 2026

Signed Tanya Cissell P.L.S. or R.C.E. No. 9857



COUNTY SURVEYOR'S STATEMENT

This Corner Record was received March 20, 2026

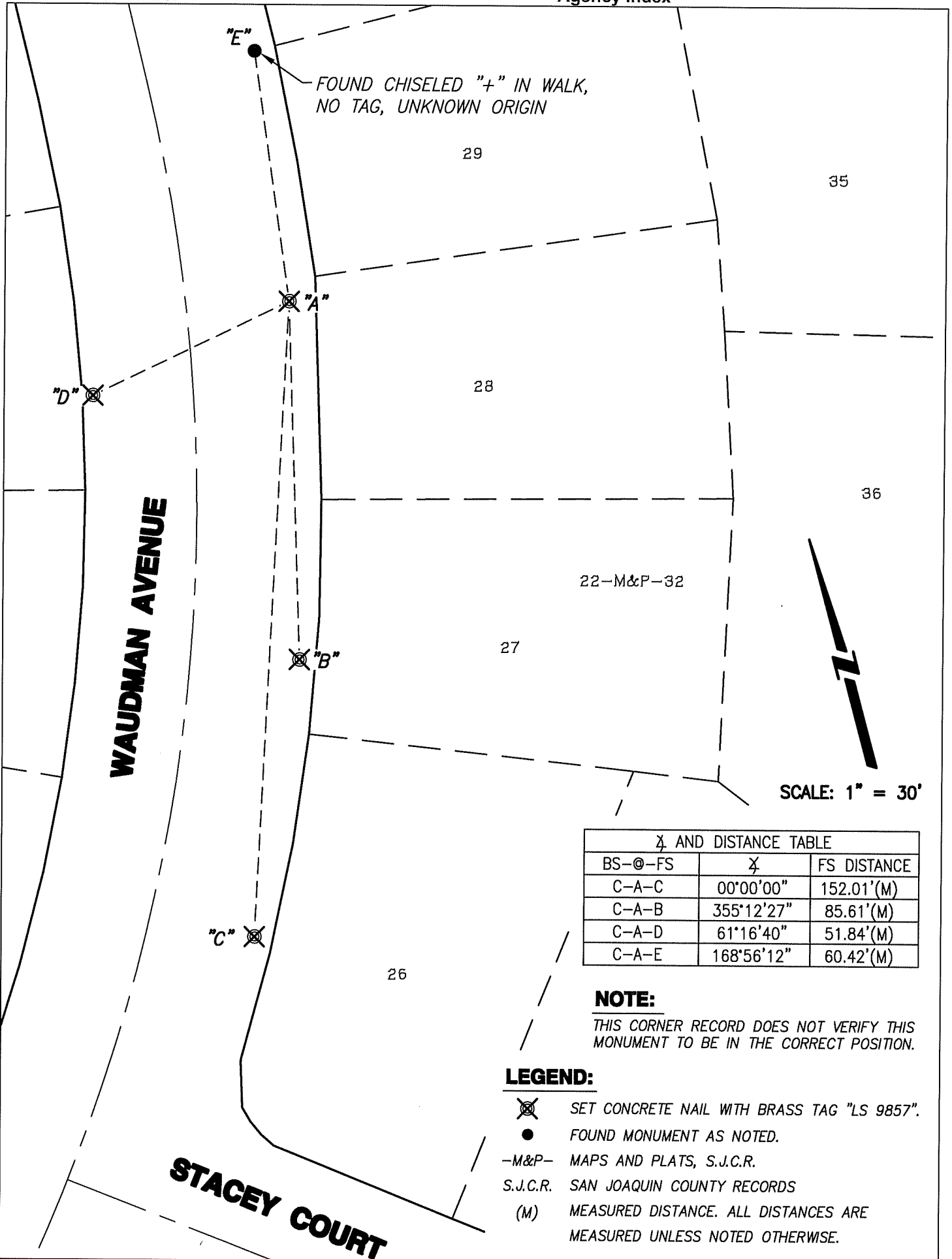
and examined and filed March 20, 2026

Signed James E. Hart P.L.S. or R.C.E. No. 8657

Title County Surveyor



County Surveyor's Comment _____



FOUND CHISELED "+" IN WALK,
NO TAG, UNKNOWN ORIGIN

29

35

28

36

22-M&P-32

27

26

SCALE: 1" = 30'

X AND DISTANCE TABLE		
BS-@-FS	X	FS DISTANCE
C-A-C	00°00'00"	152.01'(M)
C-A-B	355°12'27"	85.61'(M)
C-A-D	61°16'40"	51.84'(M)
C-A-E	168°56'12"	60.42'(M)

NOTE:

THIS CORNER RECORD DOES NOT VERIFY THIS MONUMENT TO BE IN THE CORRECT POSITION.

LEGEND:

- SET CONCRETE NAIL WITH BRASS TAG "LS 9857".
- FOUND MONUMENT AS NOTED.
- M&P- MAPS AND PLATS, S.J.C.R.
- S.J.C.R. SAN JOAQUIN COUNTY RECORDS
- (M) MEASURED DISTANCE. ALL DISTANCES ARE MEASURED UNLESS NOTED OTHERWISE.