

# CORNER RECORD

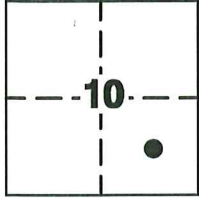
Agency Index CR-26-140

Document Number \_\_\_\_\_

City of STOCKTON

County of SAN JOAQUIN, California

Brief Legal Description INTERSECTION OF PROSPECTOR DRIVE AND WACO WAY



T.2N., R.6E.

### CORNER TYPE

- Government Corner     Control  
 Meander                     Property  
 Rancho                          Other

Date of Survey 10-20-25

### COORDINATES (Optional)

N. \_\_\_\_\_ E. \_\_\_\_\_

Elevation \_\_\_\_\_

Units     Metric     U.S. Survey Foot

Horizontal Datum \_\_\_\_\_

Zone \_\_\_\_\_ Epoch Date \_\_\_\_\_

Vertical Datum \_\_\_\_\_

Complies with Public Resources Code §§8801-8819

Complies with Public Resources Code §§8890-8902

PLS Act Ref:     8765(d)             8771             8773             Other:

Corner/Monument:     Left as found     Established     Rebuilt             Pre-Construction  
                                Found and tagged     Reestablished     Referenced             Post-Construction

Narrative of corner identified and monument as found, set, reset, replaced, or removed:

See sheet #2 for description (s):

FOUND ONE (1) CHISELED "+" IN WALK, NO TAG; SET FOUR (4) CONCRETE NAILS WITH BRASS TAG "LS 9857" AS WITNESS CORNERS, ALL AS SHOWN ON SHEET 2.

### SURVEYOR'S STATEMENT

This Corner Record was prepared by me or under my direction in conformance with the Professional Land Surveyors' Act on MARCH 19, 2026

Signed Janya Cissell P.L.S. or R.C.E. No. 9857



### COUNTY SURVEYOR'S STATEMENT

This Corner Record was received March 20, 2026

and examined and filed March 20, 2026

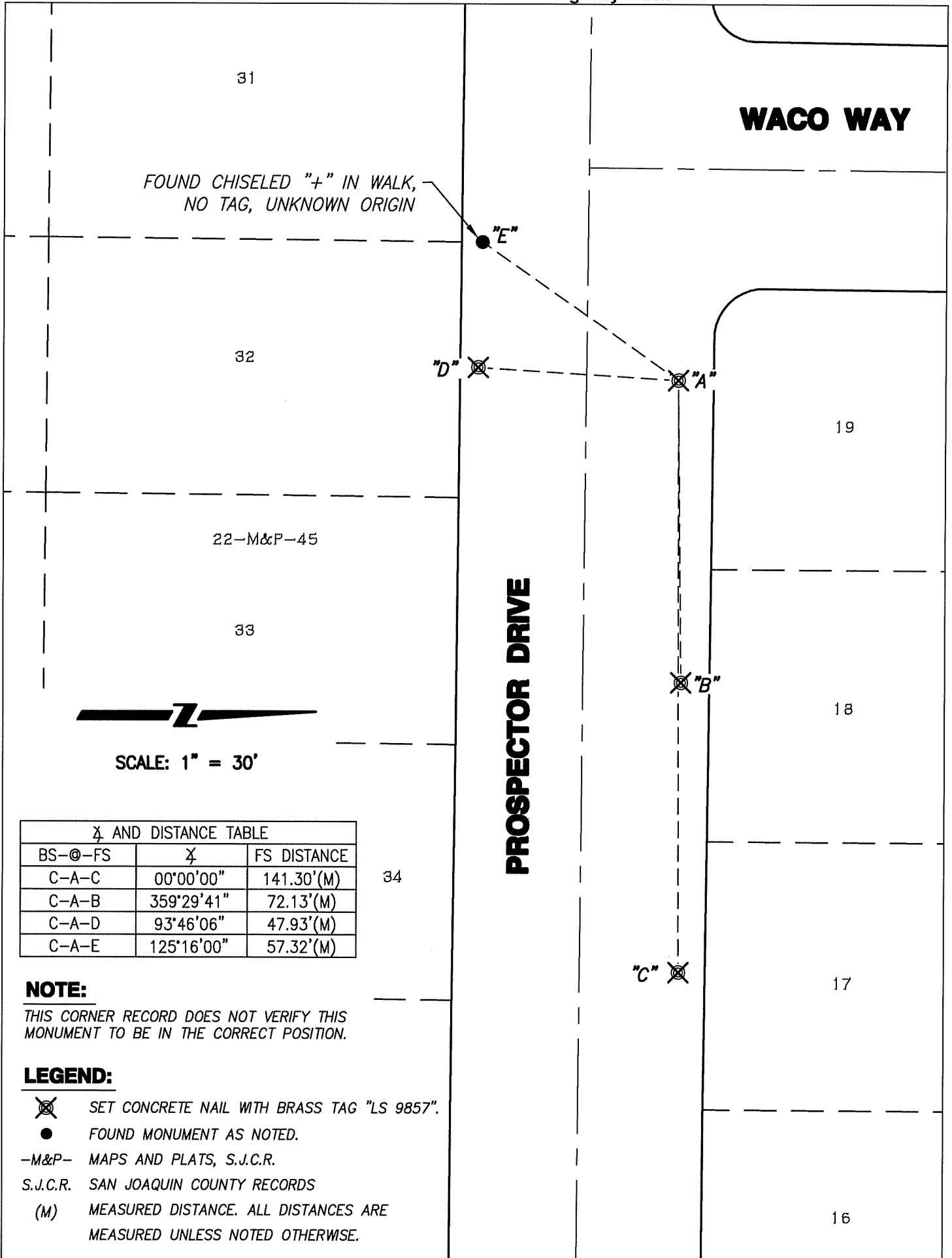
Signed James E Hart P.L.S. or R.C.E. No. 8657

Title County Surveyor



County Surveyor's Comment \_\_\_\_\_

\_\_\_\_\_  
\_\_\_\_\_  
\_\_\_\_\_



FOUND CHISELED "+" IN WALK,  
NO TAG, UNKNOWN ORIGIN



SCALE: 1" = 30'

**∠ AND DISTANCE TABLE**

BS-@-FS	∠	FS DISTANCE
C-A-C	00°00'00"	141.30'(M)
C-A-B	359°29'41"	72.13'(M)
C-A-D	93°46'06"	47.93'(M)
C-A-E	125°16'00"	57.32'(M)

**NOTE:**

THIS CORNER RECORD DOES NOT VERIFY THIS MONUMENT TO BE IN THE CORRECT POSITION.

**LEGEND:**

- ⊗ SET CONCRETE NAIL WITH BRASS TAG "LS 9857".
- FOUND MONUMENT AS NOTED.
- M&P- MAPS AND PLATS, S.J.C.R.
- S.J.C.R. SAN JOAQUIN COUNTY RECORDS
- (M) MEASURED DISTANCE. ALL DISTANCES ARE MEASURED UNLESS NOTED OTHERWISE.