

CORNER RECORD

Agency Index CR-26-138
Document Number _____

City of STOCKTON

County of SAN JOAQUIN, California

Brief Legal Description CARRIE STREET BETWEEN GEN. MUELLER LANE AND HAT COURT



T.1N., R.6E.

CORNER TYPE

- Government Corner
- Meander
- Rancho
- Control
- Property
- Other

Date of Survey 10-29-25

COORDINATES (Optional)

N. _____ E. _____
 Elevation _____
 Units Metric U.S. Survey Foot
 Horizontal Datum _____
 Zone _____ Epoch Date _____
 Vertical Datum _____

- Complies with Public Resources Code §§8801-8819
- Complies with Public Resources Code §§8890-8902

- PLS Act Ref: 8765(d) 8771 8773 Other: _____
- Corner/Monument: Left as found Established Rebuilt Pre-Construction
 Found and tagged Reestablished Referenced Post-Construction

Narrative of corner identified and monument as found, set, reset, replaced, or removed:
 See sheet #2 for description (s):

FOUND ONE (1) SCRIBED "+" IN WALK, NO TAG PER (R1); SET FOUR (4) CONCRETE NAILS WITH BRASS TAG "LS 9857" AS WITNESS CORNERS, ALL AS SHOWN ON SHEET 2.

SURVEYOR'S STATEMENT

This Corner Record was prepared by me or under my direction in conformance with the Professional Land Surveyors' Act on MARCH 19, 2026

Signed Tanya Cissell P.L.S. or R.C.E. No. 9857



COUNTY SURVEYOR'S STATEMENT

This Corner Record was received March 20, 2026

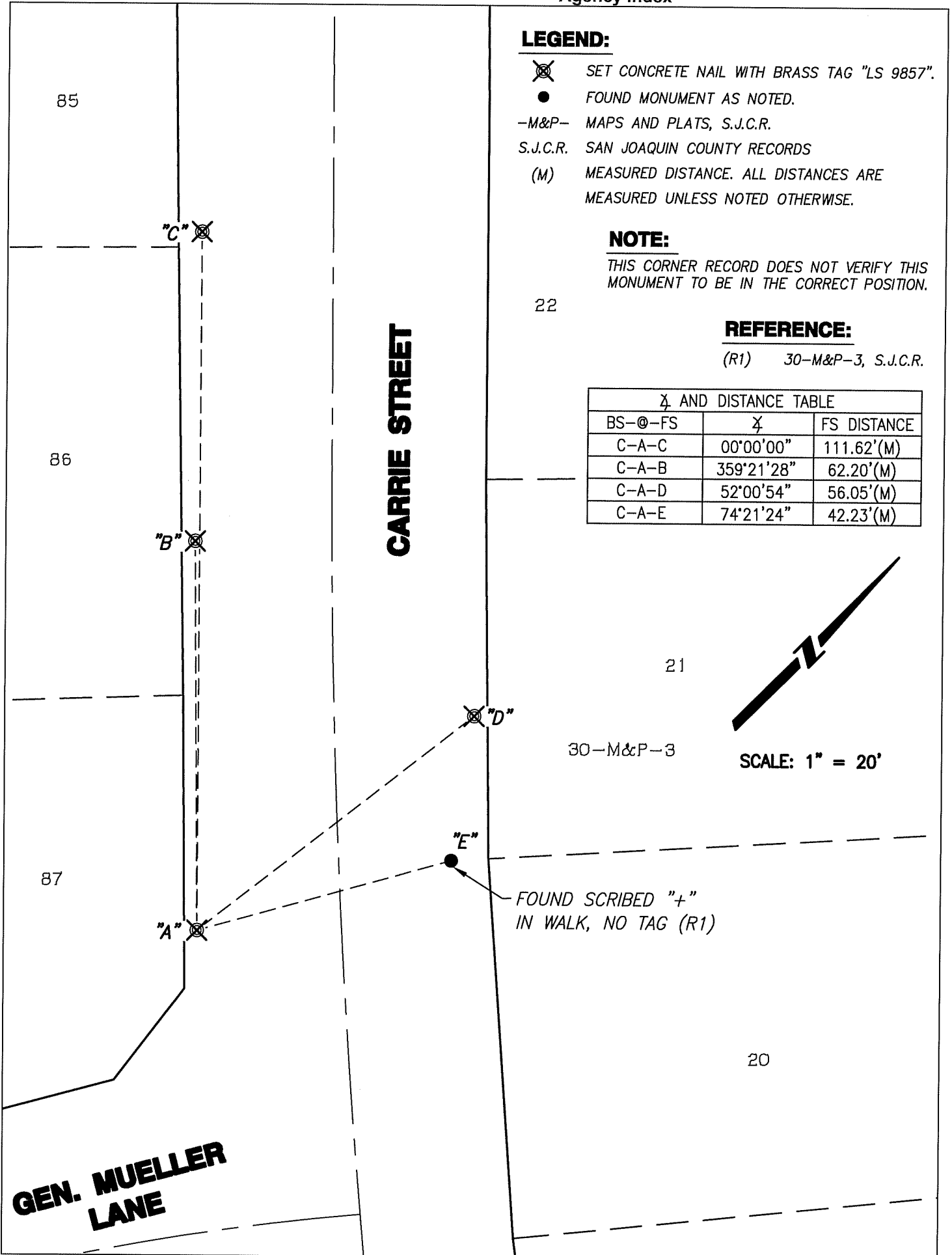
and examined and filed March 20, 2026

Signed James E. Hart P.L.S. or R.C.E. No. 8657

Title County Surveyor



County Surveyor's Comment _____



LEGEND:

- ⊗ SET CONCRETE NAIL WITH BRASS TAG "LS 9857".
- FOUND MONUMENT AS NOTED.
- M&P- MAPS AND PLATS, S.J.C.R.
- S.J.C.R. SAN JOAQUIN COUNTY RECORDS
- (M) MEASURED DISTANCE. ALL DISTANCES ARE MEASURED UNLESS NOTED OTHERWISE.

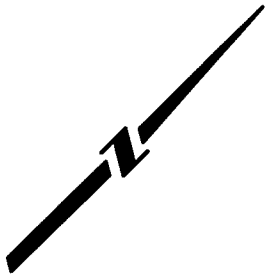
NOTE:

THIS CORNER RECORD DOES NOT VERIFY THIS MONUMENT TO BE IN THE CORRECT POSITION.

REFERENCE:

(R1) 30-M&P-3, S.J.C.R.

Z AND DISTANCE TABLE		
BS-@-FS	Z	FS DISTANCE
C-A-C	00°00'00"	111.62'(M)
C-A-B	359°21'28"	62.20'(M)
C-A-D	52°00'54"	56.05'(M)
C-A-E	74°21'24"	42.23'(M)



SCALE: 1" = 20'

GEN. MUELLER LANE