

# CORNER RECORD

Agency Index CR-26-137

Document Number \_\_\_\_\_

County of SAN JOAQUIN, California

City of STOCKTON

Brief Legal Description KATE LINDE CIRCLE



T.1N., R.6E.

### CORNER TYPE

- Government Corner     Control  
 Meander                     Property  
 Rancho                          Other

Date of Survey 10-29-25

### COORDINATES (Optional)

N. \_\_\_\_\_ E. \_\_\_\_\_  
 Elevation \_\_\_\_\_  
 Units     Metric     U.S. Survey Foot  
 Horizontal Datum \_\_\_\_\_  
 Zone \_\_\_\_\_ Epoch Date \_\_\_\_\_  
 Vertical Datum \_\_\_\_\_

- Complies with Public Resources Code §§8801-8819  
 Complies with Public Resources Code §§8890-8902

- PLS Act Ref:     8765(d)     8771     8773     Other:  
 Corner/  
 Monument:     Left as found     Established     Rebuilt     Pre-Construction  
                    Found and tagged     Reestablished     Referenced     Post-Construction

Narrative of corner identified and monument as found, set, reset, replaced, or removed:  
 See sheet #2 for description (s):

FOUND ONE (1) CHISELED "+" IN WALK, NO TAG PER (R1); SET FOUR (4) CONCRETE NAILS WITH BRASS TAG "LS 9857" AS WITNESS CORNERS, ALL AS SHOWN ON SHEET 2.

### SURVEYOR'S STATEMENT

This Corner Record was prepared by me or under my direction in conformance with  
 the Professional Land Surveyors' Act on MARCH 19, 2026

Signed Tanya Cissell P.L.S. or R.C.E. No. 9857



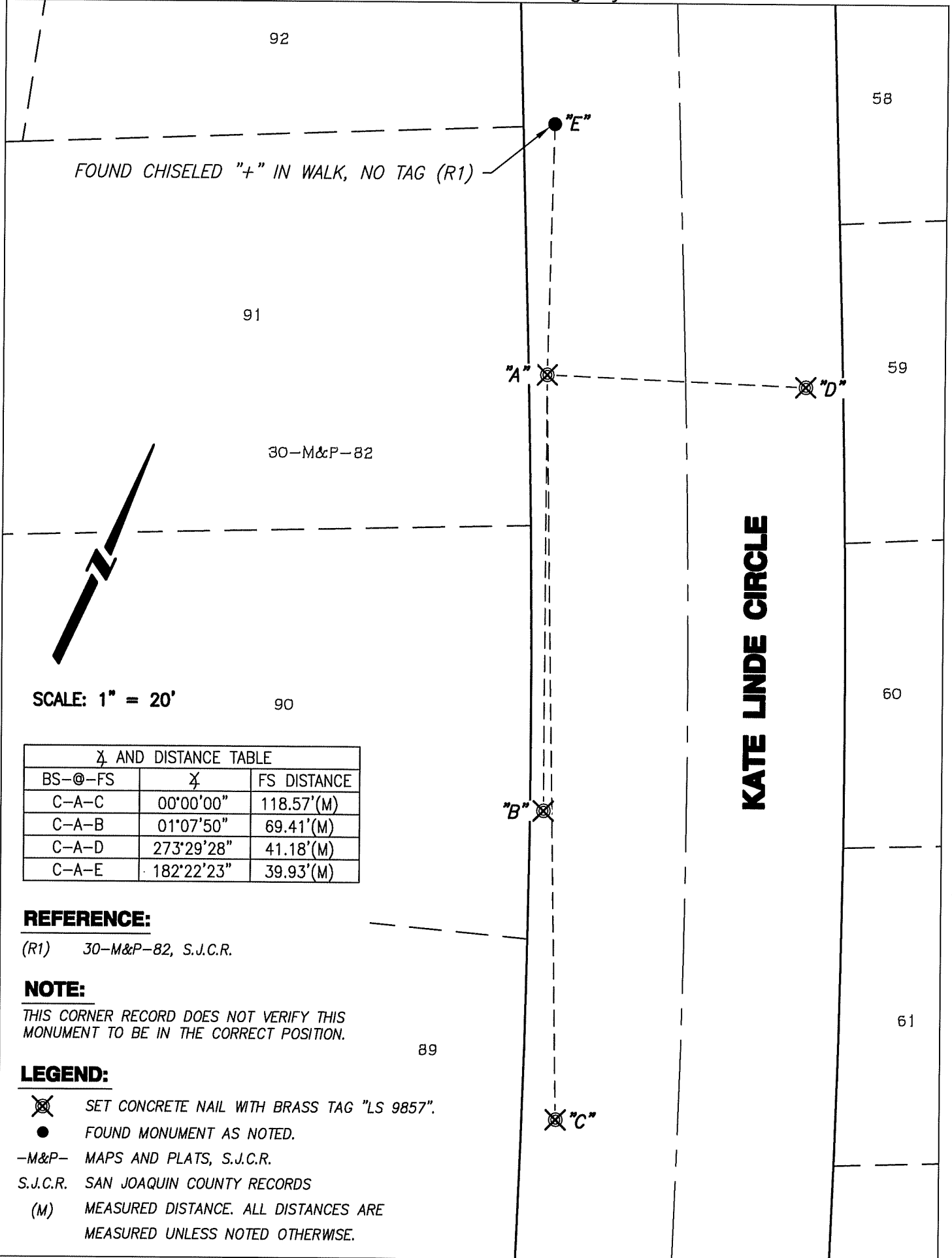
### COUNTY SURVEYOR'S STATEMENT

This Corner Record was received March 20, 2026  
 and examined and filed March 20, 2026

Signed James E. Hart P.L.S. or R.C.E. No. 8657  
 Title County Surveyor



County Surveyor's Comment \_\_\_\_\_  
 \_\_\_\_\_  
 \_\_\_\_\_



∠ AND DISTANCE TABLE

BS-@-FS	∠	FS DISTANCE
C-A-C	00°00'00"	118.57'(M)
C-A-B	01°07'50"	69.41'(M)
C-A-D	273°29'28"	41.18'(M)
C-A-E	182°22'23"	39.93'(M)

**REFERENCE:**

(R1) 30-M&P-82, S.J.C.R.

**NOTE:**

THIS CORNER RECORD DOES NOT VERIFY THIS MONUMENT TO BE IN THE CORRECT POSITION.

**LEGEND:**

- ⊗ SET CONCRETE NAIL WITH BRASS TAG "LS 9857".
- FOUND MONUMENT AS NOTED.
- M&P- MAPS AND PLATS, S.J.C.R.
- S.J.C.R. SAN JOAQUIN COUNTY RECORDS
- (M) MEASURED DISTANCE. ALL DISTANCES ARE MEASURED UNLESS NOTED OTHERWISE.