

# CORNER RECORD

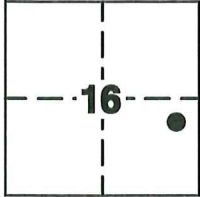
Agency Index CR-26-136

Document Number \_\_\_\_\_

City of STOCKTON

County of SAN JOAQUIN, California

Brief Legal Description E. LONGVIEW AVENUE BETWEEN KERMIT LANE AND LINDA SUE DRIVE



C.M. WEBER  
GRANT

### CORNER TYPE

- Government Corner
- Meander
- Rancho
- Control
- Property
- Other

Date of Survey 10-28-25

### COORDINATES (Optional)

N. \_\_\_\_\_ E. \_\_\_\_\_

Elevation \_\_\_\_\_

Units  Metric  U.S. Survey Foot

Horizontal Datum \_\_\_\_\_

Zone \_\_\_\_\_ Epoch Date \_\_\_\_\_

Vertical Datum \_\_\_\_\_

- Complies with Public Resources Code §§8801-8819
- Complies with Public Resources Code §§8890-8902

PLS Act Ref:  8765(d)  8771  8773  Other:

Corner/Monument:  Left as found  Established  Rebuilt  Pre-Construction  
 Found and tagged  Reestablished  Referenced  Post-Construction

Narrative of corner identified and monument as found, set, reset, replaced, or removed:

See sheet #2 for description (s):

FOUND TWO (2) CHISELED "+" IN WALK, NO TAG; SET FOUR (4) CONCRETE NAILS WITH BRASS TAG "LS 9857" AS WITNESS CORNERS, ALL AS SHOWN ON SHEET 2.

### SURVEYOR'S STATEMENT

This Corner Record was prepared by me or under my direction in conformance with the Professional Land Surveyors' Act on MARCH 19, 2026

Signed Tanya Cissell P.L.S. or R.C.E. No. 9857



### COUNTY SURVEYOR'S STATEMENT

This Corner Record was received March 20, 2026

and examined and filed March 20, 2026

Signed James E Hart P.L.S. or R.C.E. No. 8657

Title County Surveyor



County Surveyor's Comment \_\_\_\_\_  
\_\_\_\_\_  
\_\_\_\_\_

**LEGEND:**



SET CONCRETE NAIL WITH BRASS TAG "LS 9857".



FOUND MONUMENT AS NOTED.

-M&P- MAPS AND PLATS, S.J.C.R.

38 S.J.C.R. SAN JOAQUIN COUNTY RECORDS

(M) MEASURED DISTANCE. ALL DISTANCES ARE MEASURED UNLESS NOTED OTHERWISE.

**NOTE:**

THIS CORNER RECORD DOES NOT VERIFY THIS MONUMENT TO BE IN THE CORRECT POSITION.

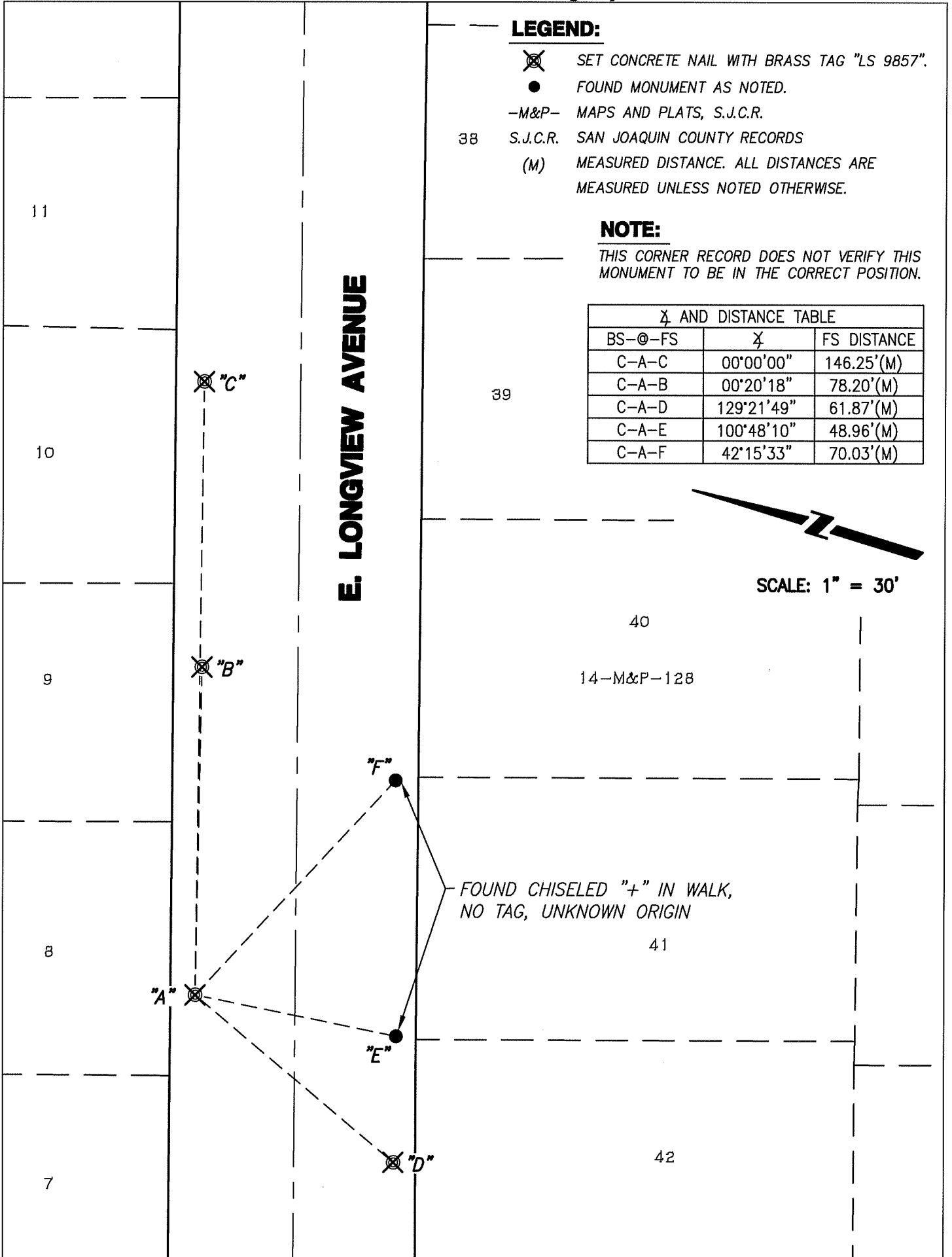
∠ AND DISTANCE TABLE

BS-@-FS	∠	FS DISTANCE
C-A-C	00°00'00"	146.25'(M)
C-A-B	00°20'18"	78.20'(M)
C-A-D	129°21'49"	61.87'(M)
C-A-E	100°48'10"	48.96'(M)
C-A-F	42°15'33"	70.03'(M)



SCALE: 1" = 30'

**E. LONGVIEW AVENUE**



FOUND CHISELED "+" IN WALK,  
NO TAG, UNKNOWN ORIGIN