

CORNER RECORD

Agency Index CR-26-128

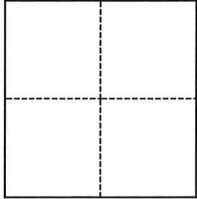
Document Number _____

City of TRACY County of SAN JOAQUIN, California

Brief Legal Description NE 1/4 of the NE 1/4, Section 1, T3S, R5E, M.D.M.

CORNER TYPE

COORDINATES (Optional)



- Government Corner
- Meander
- Rancho
- Control
- Property
- Other

N. _____ E. _____

Elevation _____

Units Metric U.S. Survey Foot

Horizontal Datum _____

Zone _____ Epoch Date _____

Vertical Datum _____

Complies with Public Resources Code §§8801-8819

Complies with Public Resources Code §§8890-8902

PLS Act Ref.: 8765(d) 8771 8773 Other:

Corner/Monument: Left as found Established Rebuilt Pre-Construction

Found and tagged Reestablished Referenced Post-Construction

Narrative of corner identified and monument as found, set, reset, replaced, or removed:

See sheet #2 for description(s):

3/4" REBAR TAGGED "LS 5443" MARKING THE NORTHEAST CORNER OF PARCEL 1 AS SHOWN ON THE PARCEL MAP FILED FOR RECORD IN BOOK 22 OF PARCEL MAPS AT PAGE 148 SURVEYED DUE TO ITS PROXIMITY TO A UTILITY POLE BEING REPLACED.

SURVEYOR'S STATEMENT

This Corner Record was prepared by me or under my direction in conformance with

the Professional Land Surveyors' Act on MARCH 17, 2026

Signed [Signature] P.L.S. or R.C.E. No. 9864



COUNTY SURVEYOR'S STATEMENT

This Corner Record was received March 17, 2026

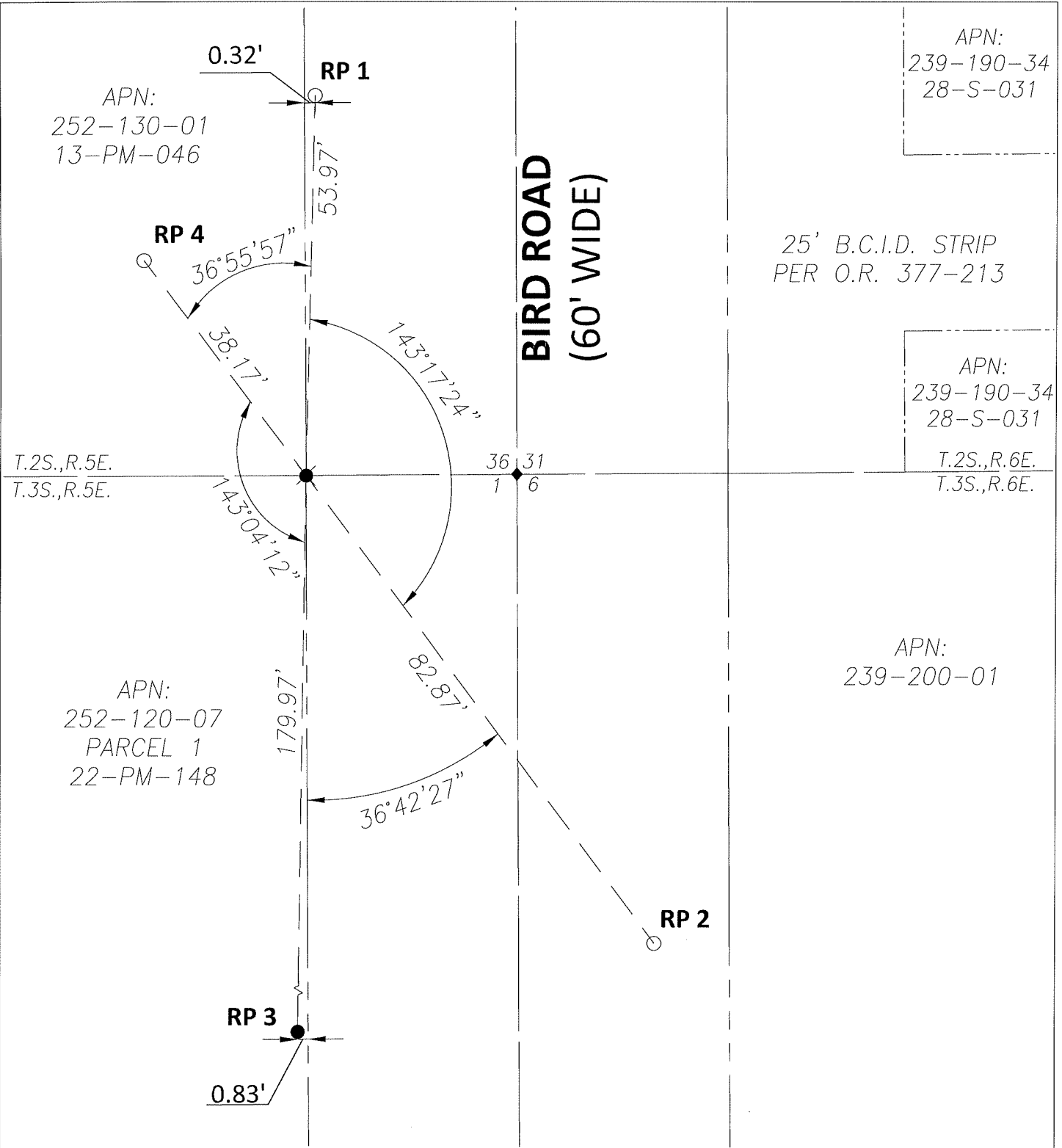
and examined and filed March 19, 2026

Signed James E. Hart P.L.S. or R.C.E. No. 8657

Title County Surveyor

County Surveyor's Comment





MONUMENT NOTES:

- ⊗ FOUND REBAR WITH PLASTIC CAP STAMPED "LS 5443" PER 22 PM 148, 1' BELOW SURFACE
- SET REBAR WITH PLASTIC CAP STAMPED "PG&E CONTROL POINT"
- SET REBAR WITH ALUMINUM CAP STAMPED "PG&E CONTROL POINT"
- ◆ SECTION CORNER

LEGEND

- ROAD RIGHT OF WAY
- SECTION LINE
- PROPERTY LINE
- APN ASSESSOR'S PARCEL NUMBER
- S- RECORD OF SURVEY, S.J.C.R.
- O.R. OFFICIAL RECORDS, S.J.C.R.
- PM PARCEL MAP, S.J.C.R.
- S.J.C.R. SAN JOAQUIN COUNTY RECORDS



(NOT TO SCALE)