

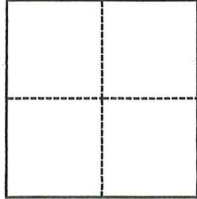
# CORNER RECORD

Agency Index CR-26-124  
Document Number \_\_\_\_\_

City of STOCKTON County of SAN JOAQUIN, California  
Brief Legal Description BLOCK 18 - SOUTH OF MORMON CHANNEL

### CORNER TYPE

### COORDINATES (Optional)



- Government Corner
- Meander
- Rancho
- Control
- Property
- Other

N. \_\_\_\_\_ E. \_\_\_\_\_  
 Elevation \_\_\_\_\_  
 Units  Metric  U.S. Survey Foot  
 Horizontal Datum \_\_\_\_\_  
 Zone \_\_\_\_\_ Epoch Date \_\_\_\_\_  
 Vertical Datum \_\_\_\_\_  
 Complies with Public Resources Code §§8801-8819  
 Complies with Public Resources Code §§8890-8902

Date of Survey February 26, 2026

- PLS Act Ref.:  8765(d)  8771  8773  Other:
- Corner/Monument:  Left as found  Established  Rebuilt  Pre-Construction  
 Found and tagged  Reestablished  Referenced  Post-Construction

Narrative of corner identified and monument as found, set, reset, replaced, or removed:  
 See sheet #2 for description(s):

THIS DOCUMENT IS FOR THE PURPOSE OF RESETTING ANY MISSING OR OBLITERATED CORNERS FOR BLOCK 18, "SOUTH OF MORMON CHANNEL", IN THE CITY OF STOCKTON, AS SHOWN ON RECORD OF SURVEY, BOOK 35, PAGE 9, SAN JOAQUIN COUNTY RECORDS.

### SURVEYOR'S STATEMENT

This Corner Record was prepared by me or under my direction in conformance with the Professional Land Surveyors' Act on March 13, 2026

Signed Zachary C. Wong P.L.S. or R.C.E. No. L.S. 7600



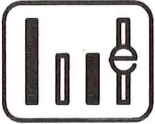
### COUNTY SURVEYOR'S STATEMENT

This Corner Record was received March 13, 2026 and examined and filed March 17, 2026

Signed James E. Hart P.L.S. or R.C.E. No. 8657  
Title County Surveyor

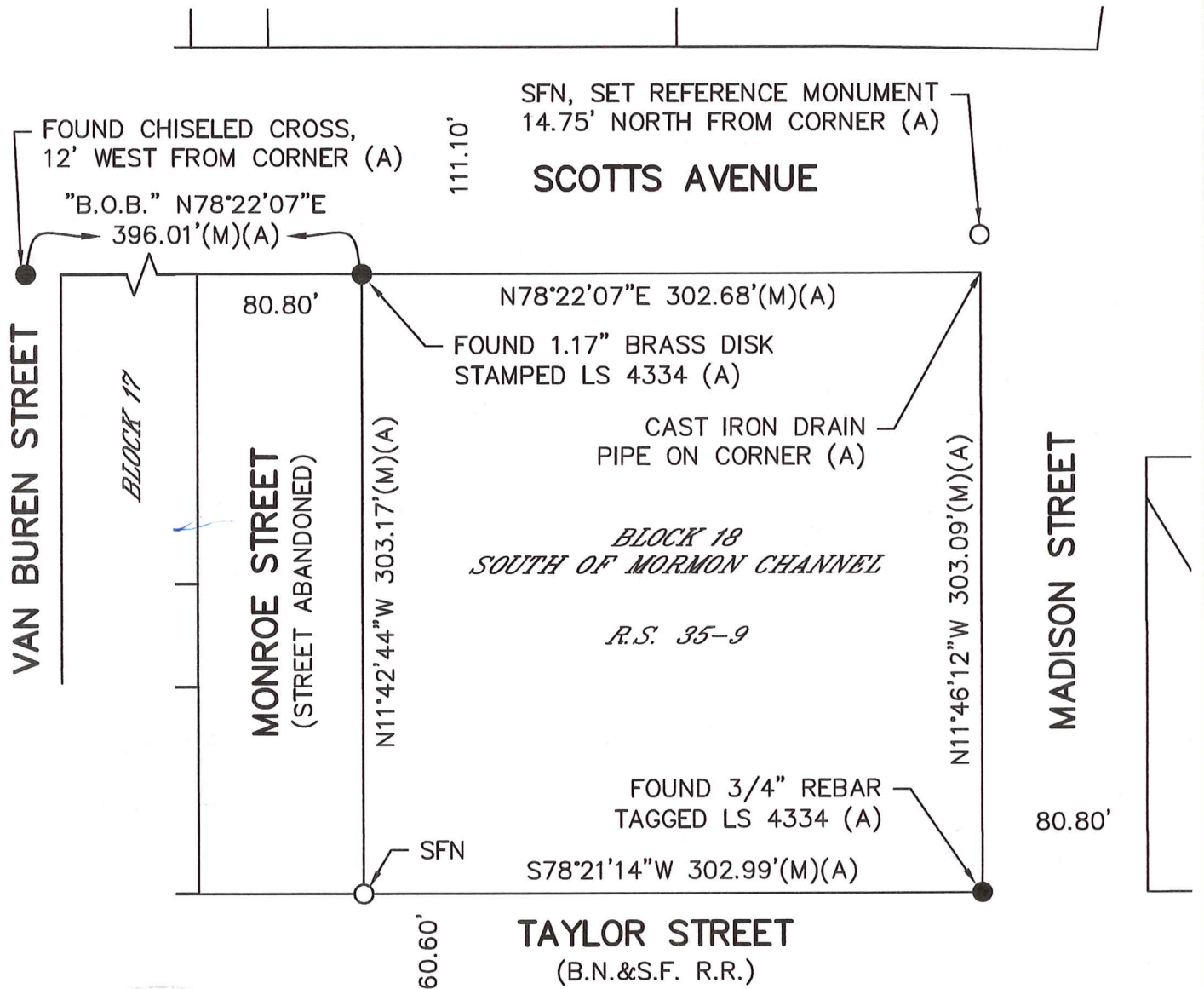


County Surveyor's Comment



**WONG ENGINEERS, INC.**  
 4578 FEATHER RIVER DRIVE, SUITE A  
 STOCKTON, CA 95219 (209) 476-0011  
 MARCH 13, 2026 PAGE 2 OF 2

**REFERENCE:**  
 (A) R.S. 35-9, SJCR



**LEGEND:**

- B.O.B. BASIS OF BEARINGS
- (M) MEASURED
- R.S. RECORD OF SURVEY, BOOK-PAGE
- SFN SEARCHED, FOUND NOTHING
- SJCR SAN JOAQUIN COUNTY RECORDS

- FOUND MONUMENT AS NOTED
- SET MAG NAIL WITH STEEL WASHER STAMPED L.S. 7600

