

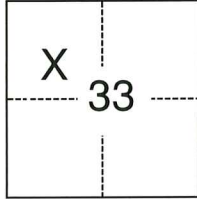
CORNER RECORD

Agency Index CR-26-120
Document Number _____

City of UNINCORPORATED County of SAN JOAQUIN, California
Brief Legal Description CORNER RECORD 12-029 & 25-206, S.J.C.S.R.

CORNER TYPE

COORDINATES (Optional)



- Government Corner
- Meander
- Rancho
- Control
- Property
- Other

N. _____ E. _____
 Elevation _____
 Units Metric U.S. Survey Foot
 Horizontal Datum _____
 Zone _____ Epoch Date _____

Date of Survey February 4, 2026

- Vertical Datum _____
- Complies with Public Resources Code §§8801-8819
- Complies with Public Resources Code §§8890-8902

T1S.,R9E.

- PLS Act Ref.: 8765(d) 8771 8773 Other:
- Corner/Monument: Left as found Established Rebuilt Pre-Construction
 Found and tagged Reestablished Referenced Post-Construction

Narrative of corner identified and monument as found, set, reset, replaced, or removed:

See sheet #2 for description(s):

FOUND 3/4" REBAR WITH CAP STAMPED "PLS 7736" AT THE SOUTHEAST CORNER OF LOT 7 OF 6 M&P 1 AND BATHEY BAR WITH NO TAG OFFSET 10 FEET SOUTH OF THE SOUTHWEST CORNER OF LOT 7 PER CORNER RECORD 25-206. FOUND 1" IRON PIPE WITH PLUG STAMPED "LS 5443" AT THE NORTHEAST AND NORTHWEST CORNERS OF LOT 14 OF 6 M&P 1 PER CORNER RECORD 12-029.

SURVEYOR'S STATEMENT

This Corner Record was prepared by me or under my direction in conformance with
 the Professional Land Surveyors' Act on February 9, 2026
 Signed [Signature] (P.L.S.) or R.C.E. No. 8474

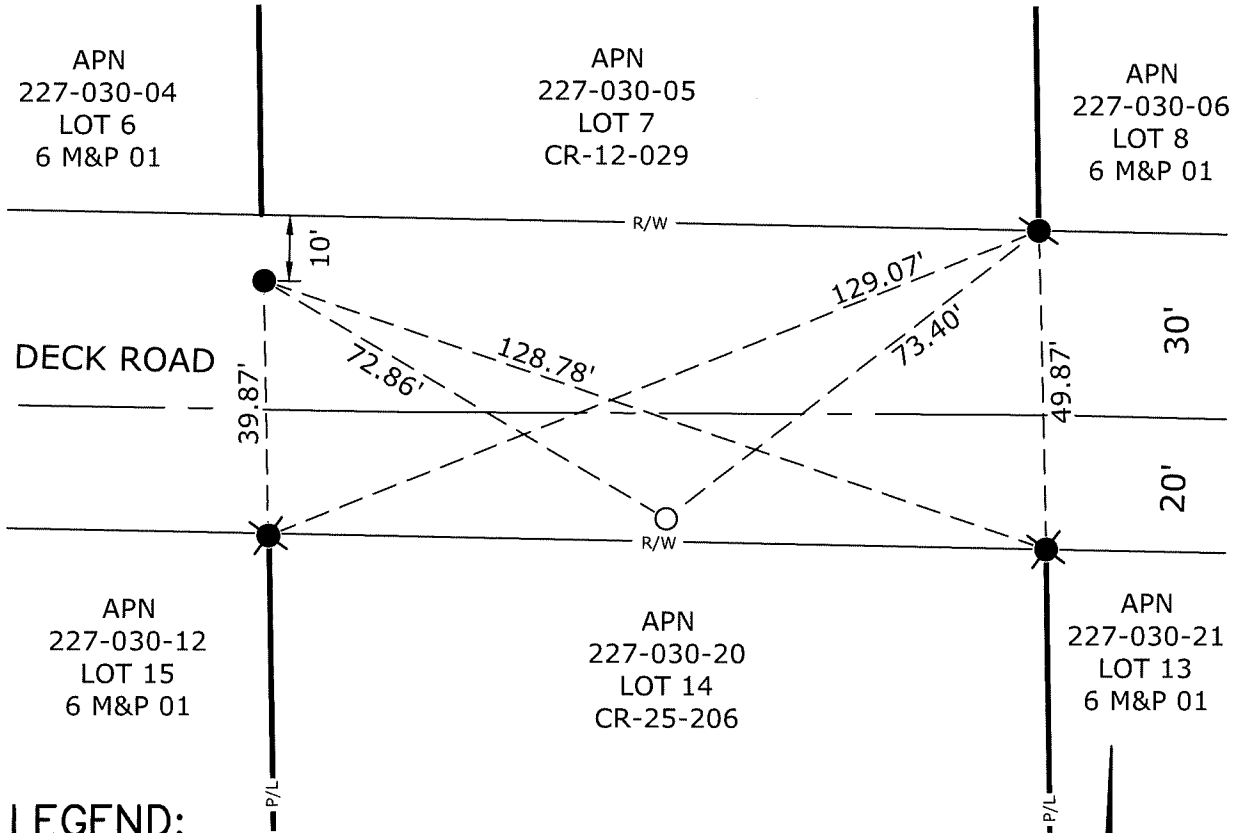


COUNTY SURVEYOR'S STATEMENT

This Corner Record was received March 5, 2026
 and examined and filed March 17, 2026
 Signed James E. Hart P.L.S. or R.C.E. No. 8657
 Title County Surveyor

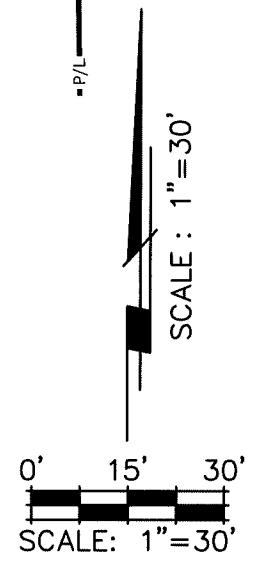


County Surveyor's Comment



LEGEND:

- FOUND 3/4" REBAR WITH CAP STAMPED "PLS 7736"
 - FOUND BATHEY BAR WITH NO TAG
 - ⊗ FOUND 1" IRON PIPE WITH PLUG STAMPED "LS 5443"
 - SET 5/8" REBAR WITH CAP
- S.J.C.S.R. SAN JOAQUIN COUNTY SURVEYOR'S RECORDS
- S.J.C.R. SAN JOAQUIN COUNTY RECORDS
- APN ASSESSOR'S PARCEL NUMBER
- M&P MAPS & PLATS
- CR CORNER RECORD



REFERENCE(S):

- CORNER RECORD 12-29, S.J.C.S.R.
- CORNER RECORD 25-206, S.J.C.S.R.
- 6 M&P 01, S.J.C.R.

NOTE: THE PURPOSE OF THIS CORNER RECORD IS TO PERPETUATE THE POSITION(S) OF EXISTING MONUMENT(S). NO REPRESENTATION IS MADE TO ANY RELATIVE POSITION(S) OF SAID MONUMENT(S). ALL RIGHT OF WAY, PROPERTY LINES, CENTERLINES AND OTHERS ARE FOR GRAPHICAL REPRESENTATION ONLY.



CORNER RECORD EXHIBIT MAP

SCALE: 1" = 30'
JOB NO: 35684653
DATE: 2/27/2026
DWG: 35684653.dwg