

CORNER RECORD

Agency Index CR-26-110

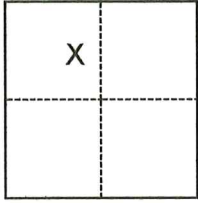
Document Number _____

UNINCORPORATED AREA County of SAN JOAQUIN, California

Brief Legal Description A PORTION OF R.S. 3-34, S.J.C.R.

CORNER TYPE

COORDINATES (Optional)



- Government Corner Control
 Meander Property
 Rancho Other

N. _____ E. _____

Elevation _____

Units Metric U.S. Survey Foot

Horizontal Datum _____

Zone _____ Epoch Date _____

Vertical Datum _____

Complies with Public Resources Code §§8801-8819

Complies with Public Resources Code §§8890-8902

SEC. 32, T.4N., R.6E.
M.D.B.&M.

PLS Act Ref.: 8765(d) 8771 8773 Other:

Corner/Monument: Left as found Established Rebuilt Pre-Construction

Found and tagged Reestablished Referenced Post-Construction

Narrative of corner identified and monument as found, set, reset, replaced, or removed:

See sheet #2 for description(s):

SEE PAGE 2 OF 2 FOR MONUMENTS FOUND.



SURVEYOR'S STATEMENT

This Corner Record was prepared by me or under my direction in conformance with the Professional Land Surveyors' Act on 02/27/2026.

Signed Walter John Shoup P.L.S. or R.C.E. No. L-7736

COUNTY SURVEYOR'S STATEMENT

This Corner Record was received March 3, 2026

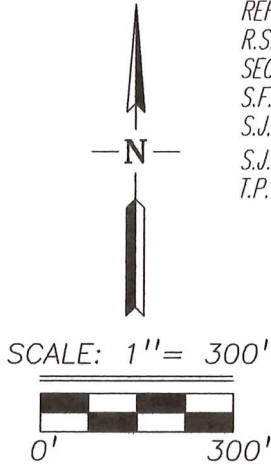
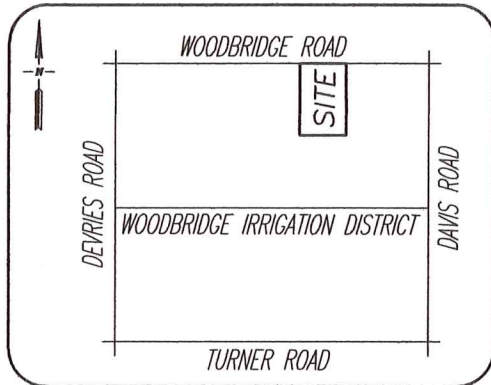
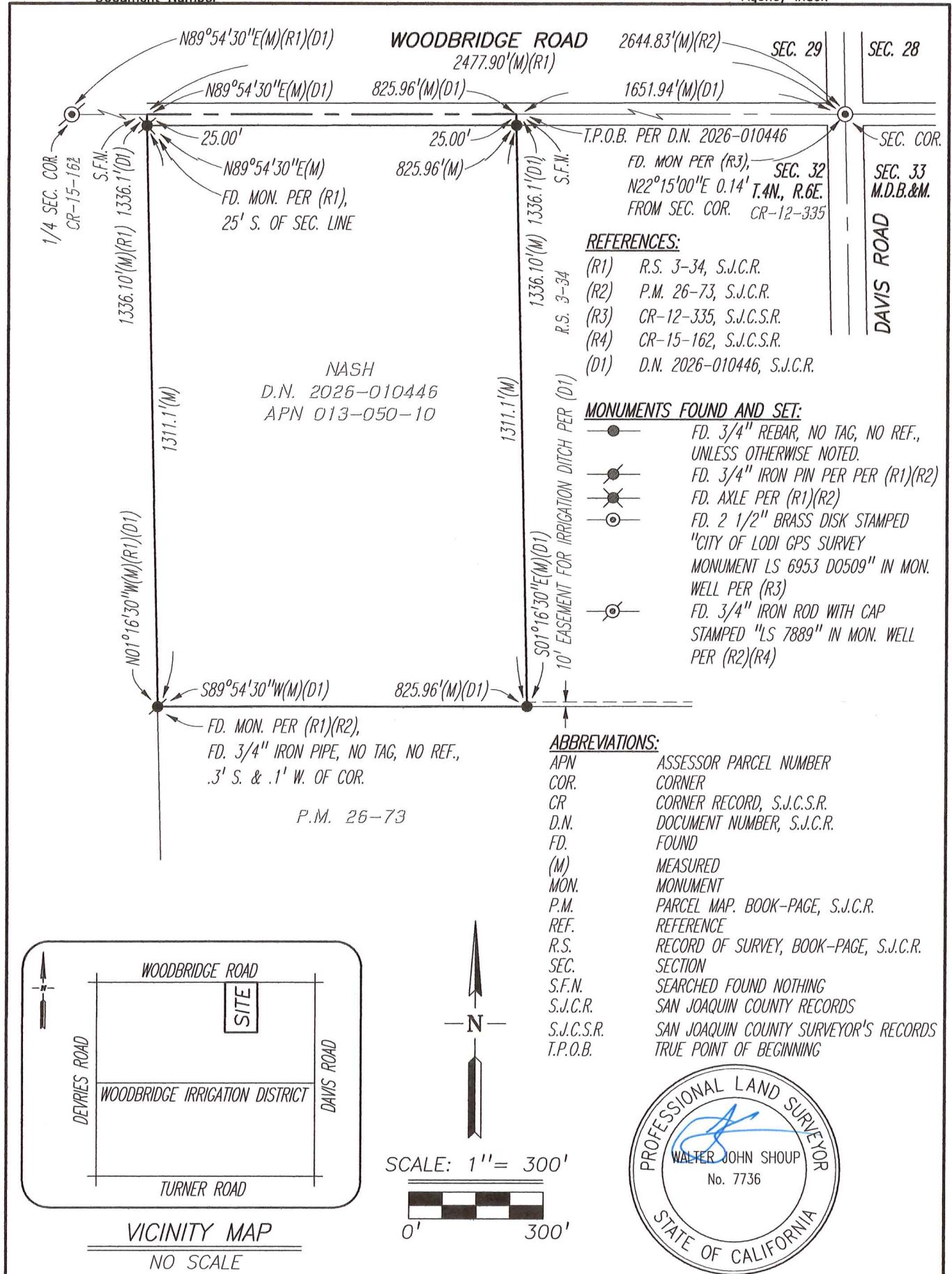
and examined and filed March 13, 2026.

Signed James E. Hart P.L.S. or R.C.E. No. 8657

Title County Surveyor

County Surveyor's Comment _____





Scale: 1"=300'	CORNER RECORD EXHIBIT MAP	Date: 02/12/2026
Job No.: 25-193		DWG: 25193CR.DWG