

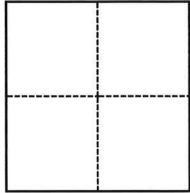
CORNER RECORD

Agency Index CR-26-106
Document Number _____

City of Lodi County of San Joaquin, California
Brief Legal Description South line-R.S. 33-100, S.J.C.R.(C.R.25-276 S.J.C.S.R.)

CORNER TYPE

COORDINATES (Optional)



- Government Corner
- Meander
- Rancho
- Control
- Property
- Other

Date of Survey December 3, 2025

N. _____ E. _____
 Elevation _____
 Units Metric U.S. Survey Foot
 Horizontal Datum _____
 Zone _____ Epoch Date _____
 Vertical Datum _____
 Complies with Public Resources Code §§8801-8819
 Complies with Public Resources Code §§8890-8902

- PLS Act Ref.: 8765(d) 8771 8773 Other:
 Corner/Monument: Left as found Established Rebuilt Pre-Construction
 Found and tagged Reestablished Referenced Post-Construction

Narrative of corner identified and monument as found, set, reset, replaced, or removed:
 See sheet #2 for description(s):

SURVEYOR'S STATEMENT

This Corner Record was prepared by me or under my direction in conformance with
 the Professional Land Surveyors' Act on February 15, 2026
 Signed [Signature] P.L.S. or R.C.E. No. 8080



COUNTY SURVEYOR'S STATEMENT

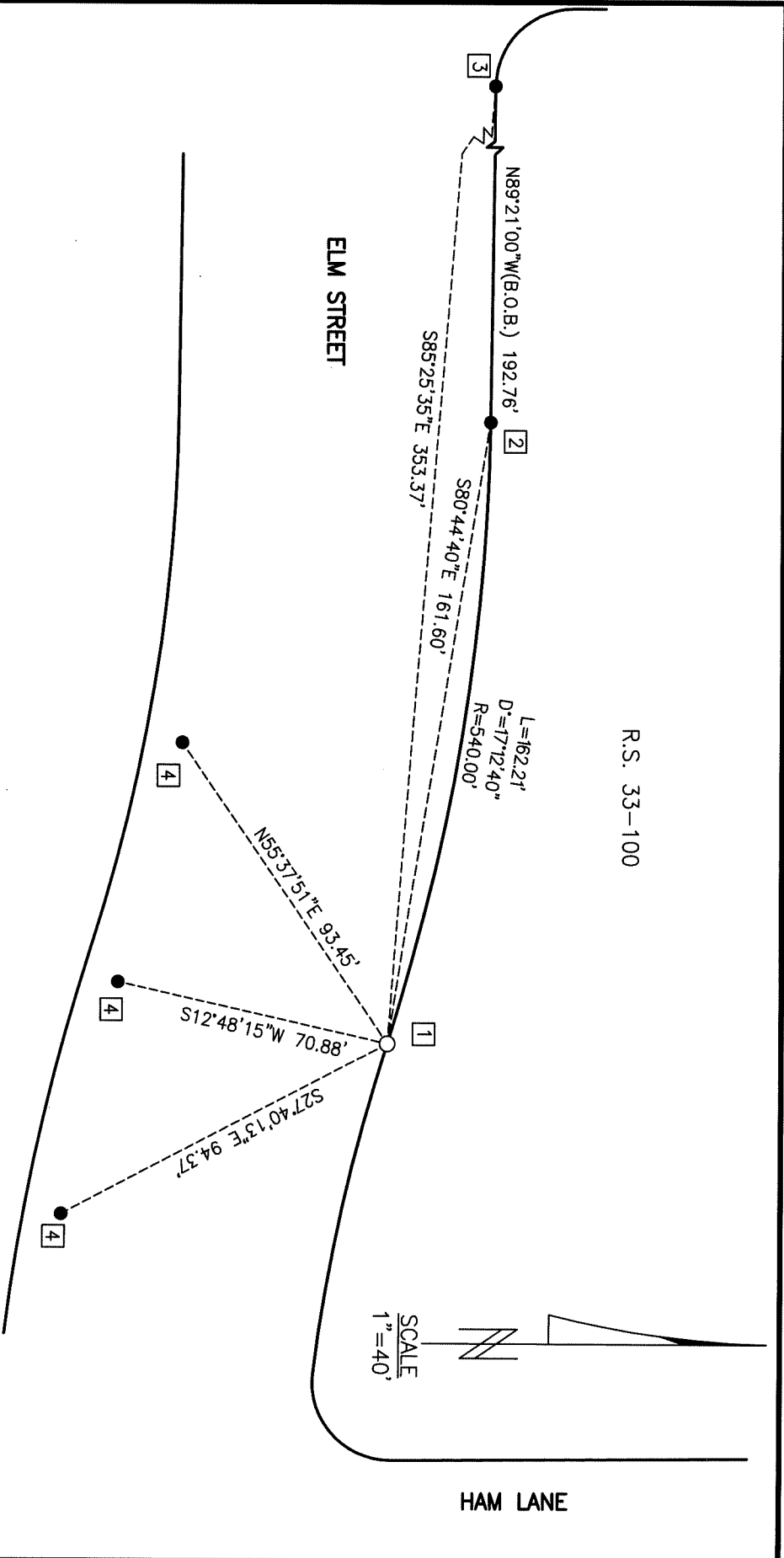
This Corner Record was received February 26, 2026
 and examined and filed March 3, 2026
 Signed James E. Hart P.L.S. or R.C.E. No. 8657
 Title County Surveyor



County Surveyor's Comment

R.S. 33-100

HAM LANE



SCALE
1"=40'

LEGEND:

- S.J.C.R. SAN JOAQUIN COUNTY RECORDS
- S.J.C.S.R. SAN JOAQUIN COUNTY SURVEYORS' RECORDS
- R.S. RECORD OF SURVEY, BOOK - PAGE, S.J.C.R.
- C.R. CORNER RECORD-S.J.C.S.R.
- FOUND MONUMENT AS NOTED
- SET 3/4" BY 30" LONG REBAR WITH PLASTIC CAP STAMPED "PLS 8080"

FOUND MONUMENT TABLE:

1	FOUND CHISELED CROSS, ACCEPTED AS SET PER (R1)
2	FOUND 3/4" IRON PIN, ACCEPTED AS SET PER (R1)
3	FOUND 1" IRON PIPE, ACCEPTED AS FOUND PER (R1)
4	FOUND MAG NAIL AND BRASS WASHER STAMPED "PLS8080 PER (R2)"

REFERENCES:

- (R1) R.S. 33-100, S.J.C.R.
- (R2) C.R. 25-276, S.J.C.S.R.

BASIS OF BEARINGS:

THE NORTH LINE OF ELM STREET AS SHOWN ON R.S. 33-100, BEING N89°21'00"W.