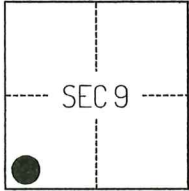


CORNER RECORD

Agency Index CR-26-105
Document Number _____

City of STOCKTON County of SAN JOAQUIN, California

Brief Legal Description FOUND MONUMENTS ON HERMAN COURT, PER CORNER RECORD 25-241, SAN JOAQUIN COUNTY SURVEYOR'S RECORDS.



C.M. WEBER GRANT

CORNER TYPE

- Government Corner
- Meander
- Rancho
- Control
- Property
- Other

Date of Survey September 15, 2025

COORDINATES (Optional)

- N. _____ E. _____
 Elevation _____
 Units Metric U.S. Survey Foot
 Horizontal Datum _____
 Zone _____ Epoch Date _____
 Vertical Datum _____
 Complies with Public Resources Code §§8801-8819
 Complies with Public Resources Code §§8890-8902

- PLS Act Ref.: 8765(d) 8771 8773 Other:
 Corner/Monument: Left as found Established Rebuilt Pre-Construction
 Found and tagged Reestablished Referenced Post-Construction

Narrative of corner identified and monument as found, set, reset, replaced, or removed:
 See sheet #2 for description(s):

THE FOUND MONUMENT(S) SHOWN ON THIS CORNER RECORD WERE FOUND AT THE LOCATION OF THE CORNER(S) ON CORNER RECORD 25-241, SAN JOAQUIN COUNTY SURVEYOR'S RECORDS. I DID NOT VERIFY THE IDENTITY AND VALIDITY OF THE MONUMENT(S) FOUND AS ACTUALLY MARKING THE PROPERTY CORNER.

SURVEYOR'S STATEMENT

This Corner Record was prepared by me or under my direction in conformance with the Professional Land Surveyors' Act on September 18, 2025.
Signed JLB P.L.S. or R.C.E. No. 8489

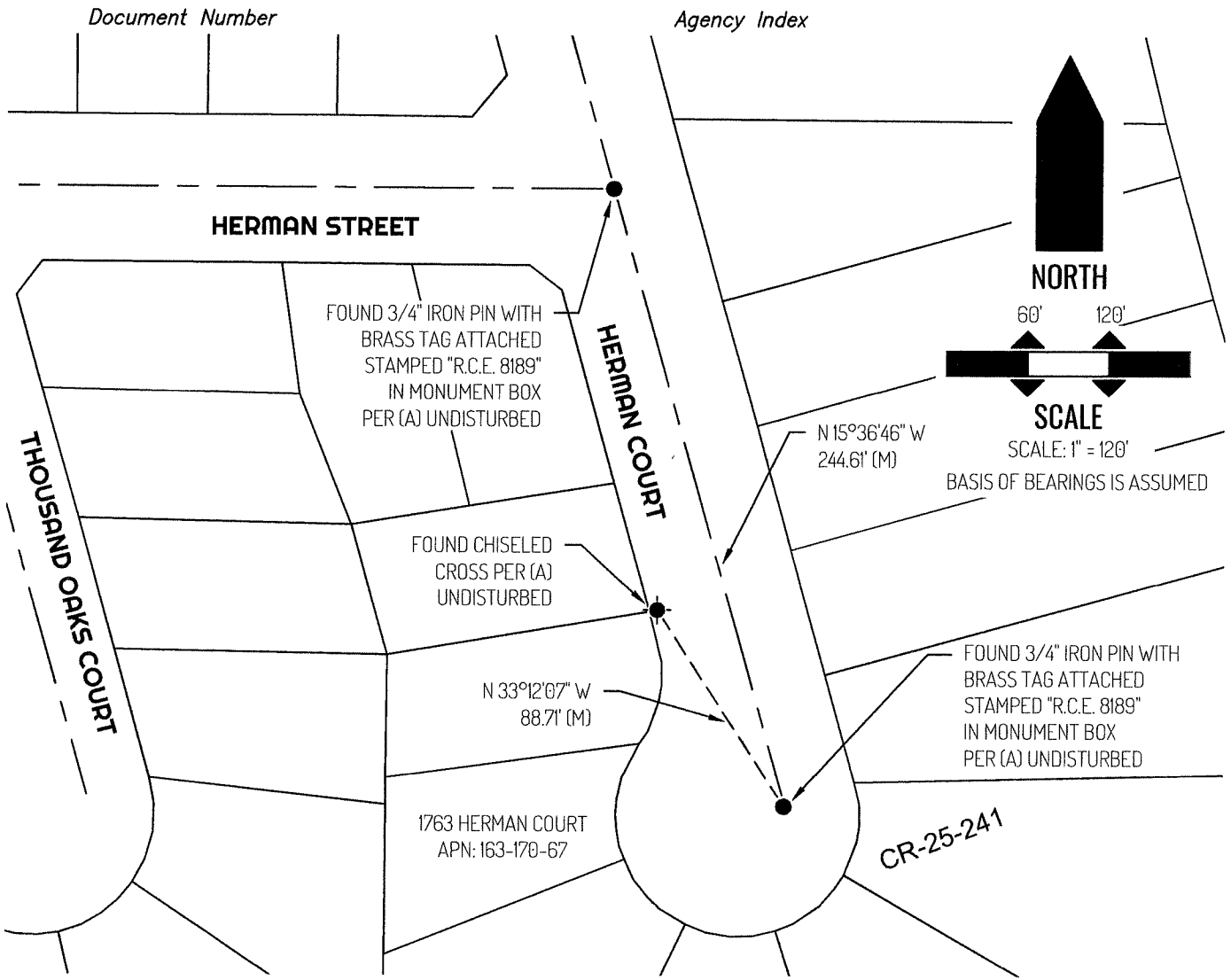


COUNTY SURVEYOR'S STATEMENT

This Corner Record was received February 23, 2026 and examined and filed March 3, 2026.
Signed James E. Hart P.L.S. or R.C.E. No. 8657
Title County Surveyor



County Surveyor's Comment



LEGEND

- FOUND MONUMENT AS NOTED
- ⊙ FOUND CHISELED CROSS AS NOTED
- 1763 REFERENCE STREET ADDRESS
- CR CORNER RECORD, SAN JOAQUIN COUNTY SURVEYOR'S RECORDS
- APN TAX ASSESSOR PARCEL NUMBER
- (M) MEASURED
- - - - - TIE LINE
- ==== LOT LINE
- - - - - RIGHT-OF-WAY CENTERLINE

REFERENCE

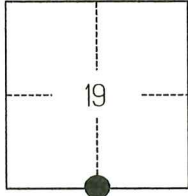
(A) CORNER RECORD 25-241, SAN JOAQUIN COUNTY SURVEYOR'S RECORDS

CORNER RECORD

Agency Index CR-26-104
 Document Number _____

City of _____ County of SAN JOAQUIN, California

Brief Legal Description FOUND MONUMENT ON THE NORTH SIDE OF LONE TREE ROAD APPROXIMATELY 2650 FEET WEST OF BRENNAN ROAD PER CORNER RECORD 25-156, SAN JOAQUIN COUNTY SURVEYOR'S RECORDS.



T1S/R9E

- CORNER TYPE**
- Government Corner Control
 Meander Property
 Rancho Other

Date of Survey JULY 31, 2025

- COORDINATES (Optional)**
- N. _____ E. _____
 Elevation _____
 Units Metric U.S. Survey Foot
 Horizontal Datum _____
 Zone _____ Epoch Date _____
 Vertical Datum _____
 Complies with Public Resources Code §§8801-8819
 Complies with Public Resources Code §§8890-8902

- PLS Act Ref.: 8765(d) 8771 8773 Other:
- Corner/
Monument: Left as found Established Rebuilt Pre-Construction
 Found and tagged Reestablished Referenced Post-Construction

Narrative of corner identified and monument as found, set, reset, replaced, or removed:
 See sheet #2 for description(s):

THE FOUND MONUMENT SHOWN ON THIS CORNER RECORD WAS FOUND AT THE LOCATION OF THE PROPERTY CORNER PER CORNER RECORD 25-156, SAN JOAQUIN COUNTY SURVEYOR'S RECORDS. I DID NOT VERIFY THE IDENTITY AND VALIDITY OF THE MONUMENT FOUND AS ACTUALLY MARKING THE PROPERTY CORNER.

SURVEYOR'S STATEMENT

This Corner Record was prepared by me or under my direction in conformance with
 the Professional Land Surveyors' Act on AUGUST 19, 2025
 Signed [Signature] P.L.S. or R.C.E. No. 8489

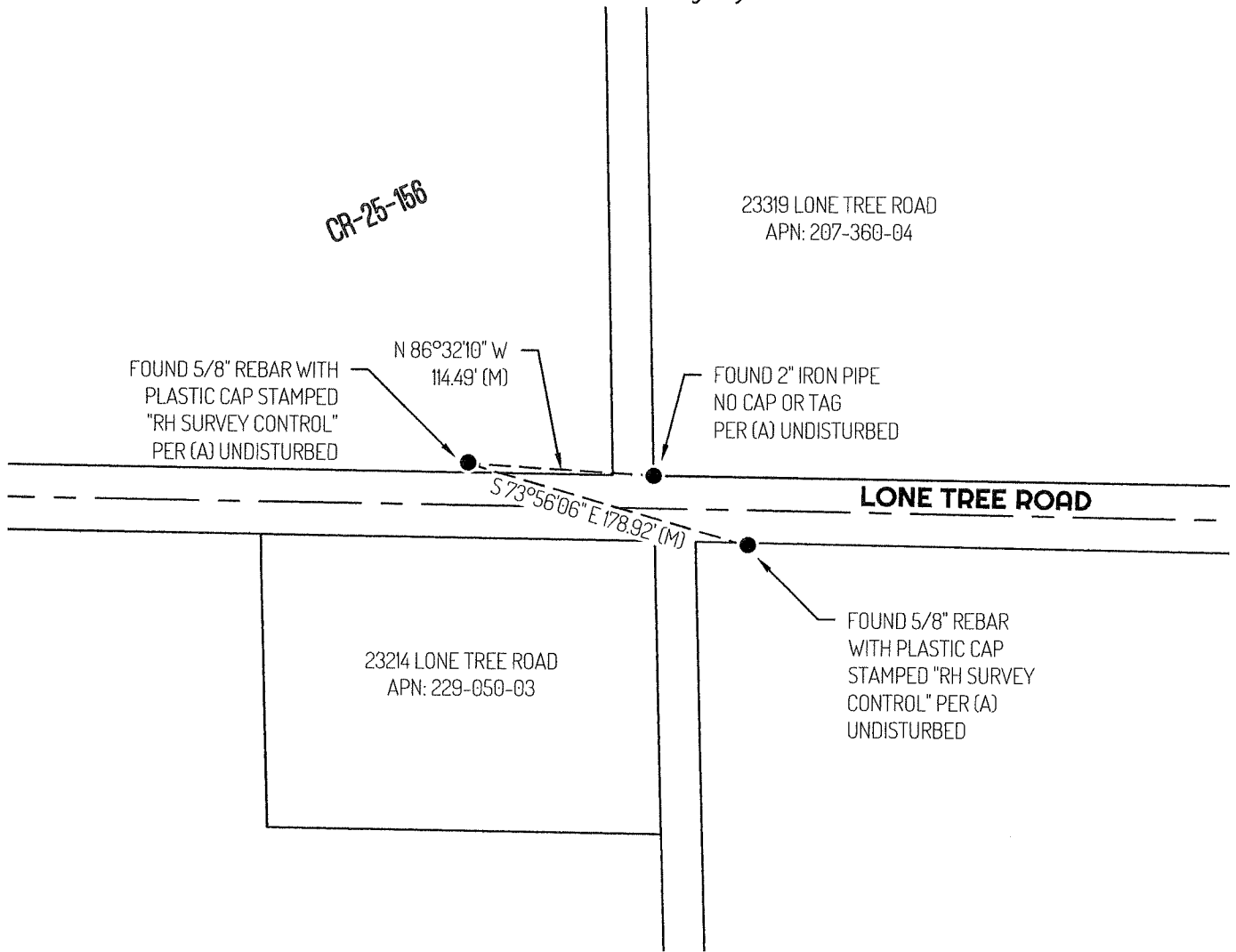


COUNTY SURVEYOR'S STATEMENT

This Corner Record was received February 23, 2026
 and examined and filed March 3, 2026
 Signed James E. Hart P.L.S. or R.C.E. No. 8657
 Title County Surveyor



County Surveyor's Comment

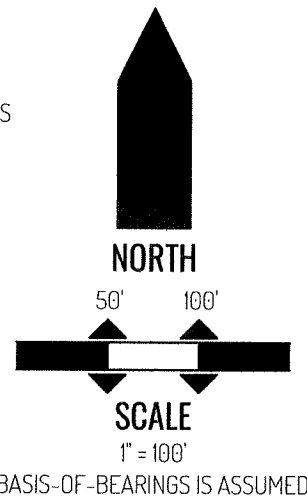


LEGEND

●	FOUND MONUMENT AS NOTED
23319	REFERENCE STREET ADDRESS
S.J.C.R.	SAN JOAQUIN COUNTY RECORDS
APN	TAX ASSESSOR PARCEL NUMBER
CR	CORNER RECORD, SAN JOAQUIN COUNTY SURVEYOR'S RECORDS
(M)	MEASURED
---	TIE LINE
—	LOT LINE
— — —	RIGHT-OF-WAY CENTERLINE

REFERENCE

(A) CORNER RECORD 25-156, SAN JOAQUIN COUNTY SURVEYOR'S RECORDS.



CORNER RECORD

Agency Index CR-26-103
Document Number _____

City of STOCKTON County of SAN JOAQUIN, California
Brief Legal Description FOUND MONUMENTS SHOWN PER CORNER RECORD 25-185, SAN JOAQUIN COUNTY SURVEYOR'S RECORDS.

CORNER TYPE

COORDINATES (Optional)



C.M. WEBER GRANT

- Government Corner
- Meander
- Rancho
- Control
- Property
- Other

Date of Survey JULY 23, 2025

N. _____ E. _____

Elevation _____

Units Metric U.S. Survey Foot

Horizontal Datum _____

Zone _____ Epoch Date _____

Vertical Datum _____

Complies with Public Resources Code §§8801-8819

Complies with Public Resources Code §§8890-8902

PLS Act Ref.: 8765(d) 8771 8773 Other:

Corner/Monument: Left as found Established Rebuilt Pre-Construction
 Found and tagged Reestablished Referenced Post-Construction

Narrative of corner identified and monument as found, set, reset, replaced, or removed:

See sheet #2 for description(s):

THE FOUND MONUMENT(S) SHOWN ON THIS CORNER RECORD WERE FOUND AT THE LOCATION OF THE CORNER(S) ON CORNER RECORD 25-185, SAN JOAQUIN COUNTY SURVEYOR'S RECORDS. I DID NOT VERIFY THE IDENTITY AND VALIDITY OF THE MONUMENT FOUND AS ACTUALLY MARKING THE PROPERTY CORNER.

SURVEYOR'S STATEMENT

This Corner Record was prepared by me or under my direction in conformance with
 the Professional Land Surveyors' Act on JULY 25, 2025
 Signed [Signature] P.L.S. or R.C.E. No. 8489

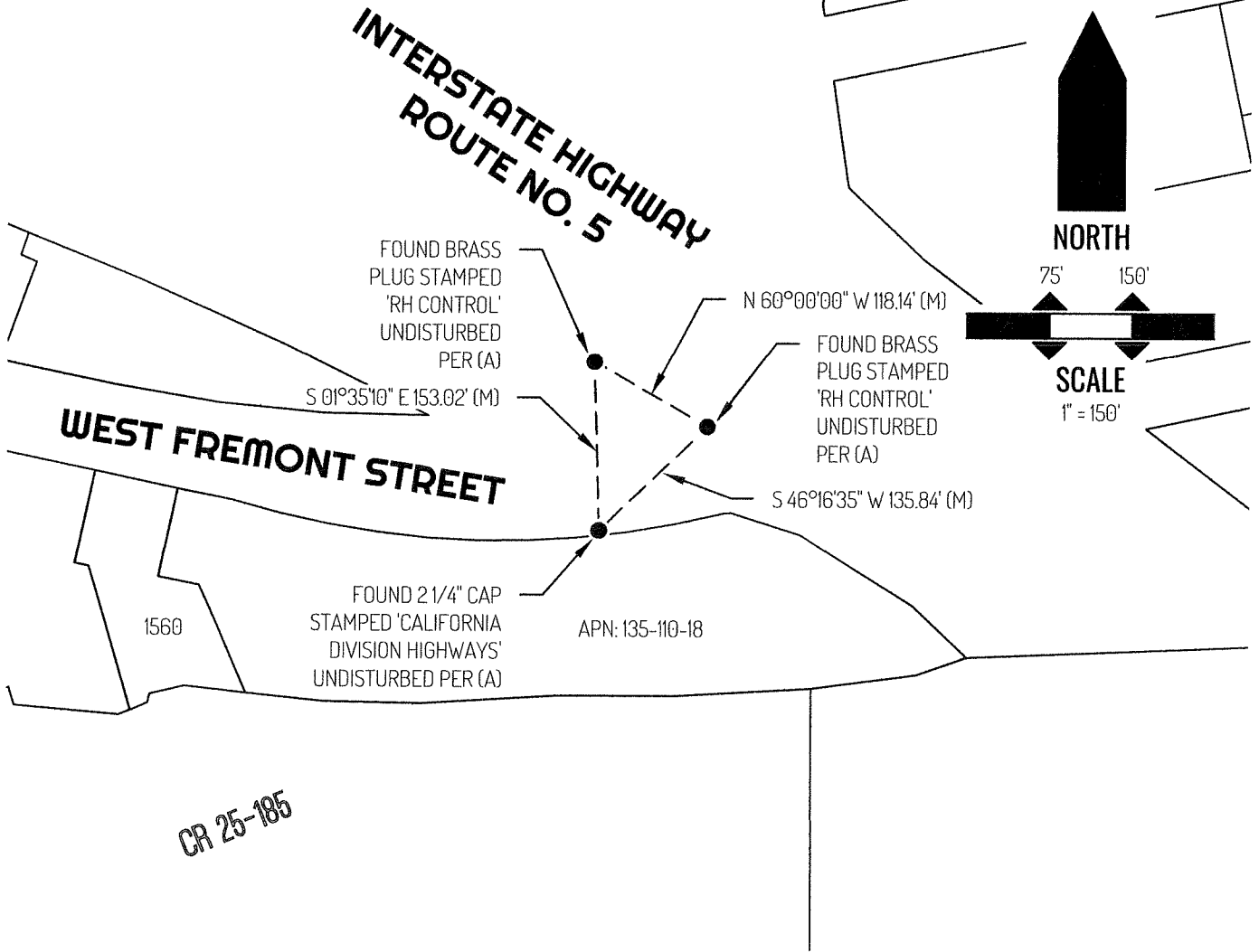


COUNTY SURVEYOR'S STATEMENT

This Corner Record was received February 23, 2026
 and examined and filed March 3, 2026
 Signed James E. Hart P.L.S. or R.C.E. No. 8657
 Title County Surveyor



County Surveyor's Comment



LEGEND

●	FOUND MONUMENT AS NOTED
1560	REFERENCE STREET ADDRESS
APN	TAX ASSESSOR PARCEL NUMBER
CR	CORNER RECORD, SAN JOAQUIN COUNTY SURVEYOR'S RECORDS
(M)	MEASURED
---	TIE LINE
—	LOT LINE

REFERENCE

(A) CORNER RECORD 25-185, SAN JOAQUIN COUNTY SURVEYOR'S RECORDS

CORNER RECORD

Agency Index CR-26-102
 Document Number _____

City of LODI County of SAN JOAQUIN, California

Brief Legal Description FOUND MONUMENTS NEAR THE INTERSECTION OF WOODROW STREET AND HALE ROAD.

CORNER TYPE

COORDINATES (Optional)



T3N/R7E

- Government Corner Control
 Meander Property
 Rancho Other

Date of Survey JUNE 9, 2025

N. _____ E. _____

Elevation _____

Units Metric U.S. Survey Foot

Horizontal Datum _____

Zone _____ Epoch Date _____

Vertical Datum _____

Complies with Public Resources Code §§8801-8819

Complies with Public Resources Code §§8890-8902

PLS Act Ref.: 8765(d) 8771 8773 Other:

Corner/
 Monument: Left as found Established Rebuilt Pre-Construction
 Found and tagged Reestablished Referenced Post-Construction

Narrative of corner identified and monument as found, set, reset, replaced, or removed:

See sheet #2 for description(s):

THE FOUND MONUMENT(S) SHOWN ON THIS CORNER RECORD WERE FOUND AT THE LOCATION OF THE CORNER(S) ON CORNER RECORD 24-470, SAN JOAQUIN COUNTY SURVEYOR'S RECORDS. I DID NOT VERIFY THE IDENTITY AND VALIDITY OF THE MONUMENT(S) FOUND AS ACTUALLY MARKING THE PROPERTY CORNER.

SURVEYOR'S STATEMENT

This Corner Record was prepared by me or under my direction in conformance with the Professional Land Surveyors' Act on AUGUST 20, 2025.
 Signed *Scott L. Blake* P.L.S. or R.C.E. No. 8489

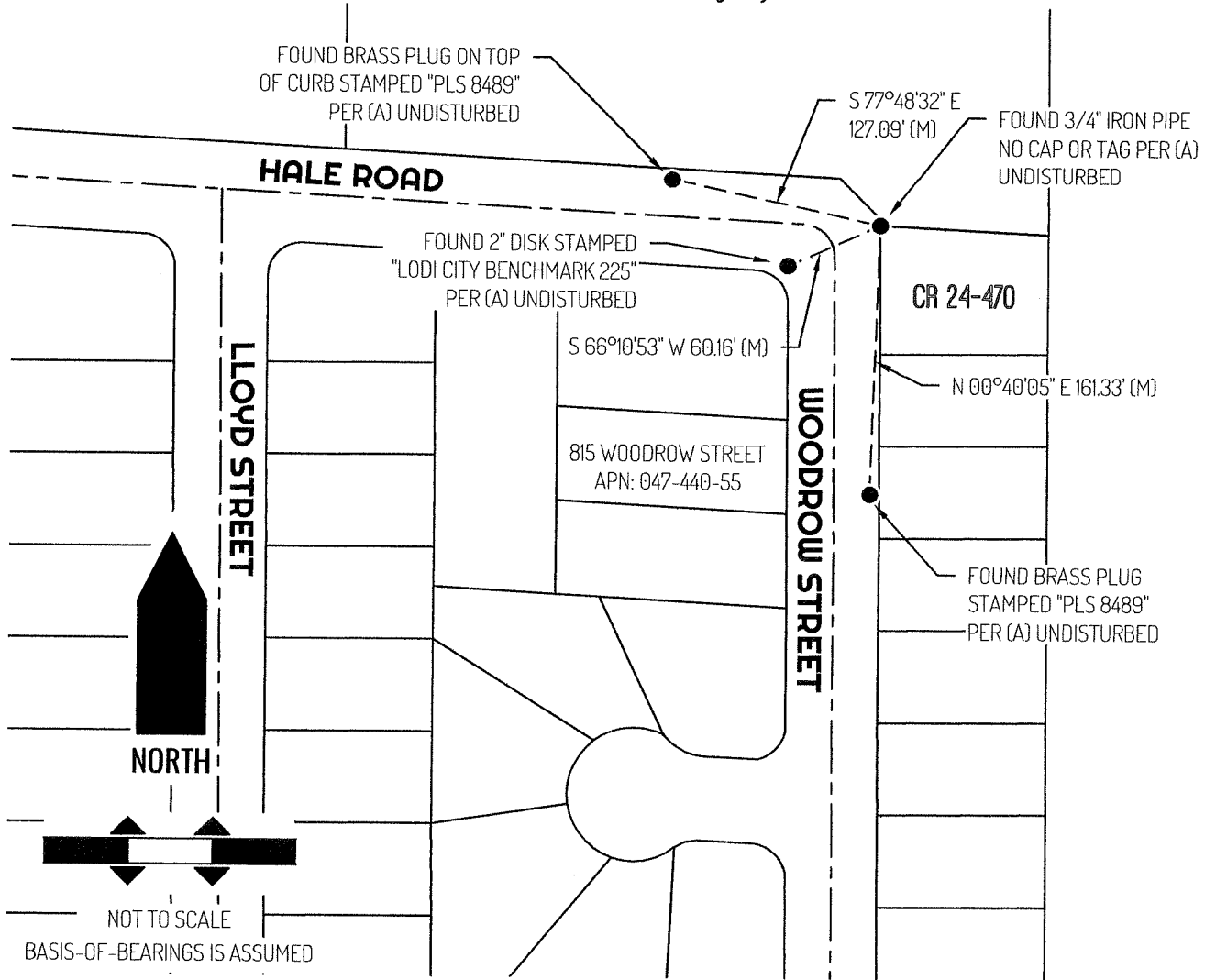


COUNTY SURVEYOR'S STATEMENT

This Corner Record was received February 23, 2026
 and examined and filed March 3, 2026.
 Signed *James E. Hart* P.L.S. or R.C.E. No. 8657
 Title County Surveyor



County Surveyor's Comment



LEGEND

●	FOUND MONUMENT AS NOTED
815	REFERENCE STREET ADDRESS
CR	CORNER RECORD, SAN JOAQUIN COUNTY SURVEYOR'S RECORDS
(M)	MEASURED
APN	TAX ASSESSOR PARCEL NUMBER
---	TIE LINE
---	LOT LINE
---	RIGHT-OF-WAY CENTERLINE

REFERENCE

(A) CORNER RECORD 24-470, SAN JOAQUIN COUNTY SURVEYOR'S RECORDS

CORNER RECORD

Agency Index CR-26-101
Document Number _____

City of _____ County of SAN JOAQUIN, California

Brief Legal Description FOUND MONUMENTS PER CORNER RECORD 25-187, SAN JOAQUIN COUNTY SURVEYOR'S RECORDS.

CORNER TYPE

COORDINATES (Optional)



T2N/R6E

- Government Corner
- Meander
- Rancho
- Control
- Property
- Other

Date of Survey JULY 23, 2025

N. _____ E. _____

Elevation _____

Units Metric U.S. Survey Foot

Horizontal Datum _____

Zone _____ Epoch Date _____

Vertical Datum _____

Complies with Public Resources Code §§8801-8819

Complies with Public Resources Code §§8890-8902

PLS Act Ref.: 8765(d) 8771 8773 Other:

Corner/Monument: Left as found Established Rebuilt Pre-Construction
 Found and tagged Reestablished Referenced Post-Construction

Narrative of corner identified and monument as found, set, reset, replaced, or removed:

See sheet #2 for description(s):

THE FOUND MONUMENT(S) SHOWN ON THIS CORNER RECORD ARE FOUND AT THE LOCATION OF THE CORNER(S) ON CORNER RECORD 25-187, SAN JOAQUIN COUNTY SURVEYOR'S RECORDS. I DID NOT VERIFY THE IDENTITY AND VALIDITY OF THE MONUMENT(S) FOUND AS ACTUALLY MARKING THE PROPERTY CORNER.

SURVEYOR'S STATEMENT

This Corner Record was prepared by me or under my direction in conformance with
 the Professional Land Surveyors' Act on JULY 25, 2025
 Signed Scott L. Blake P.L.S. or R.C.E. No. 8489

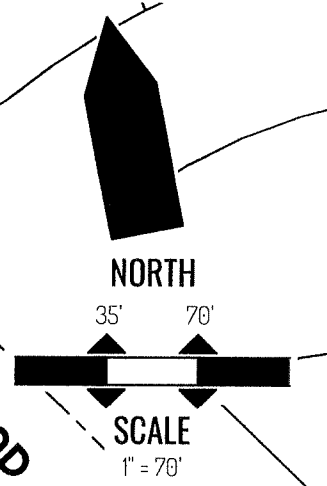
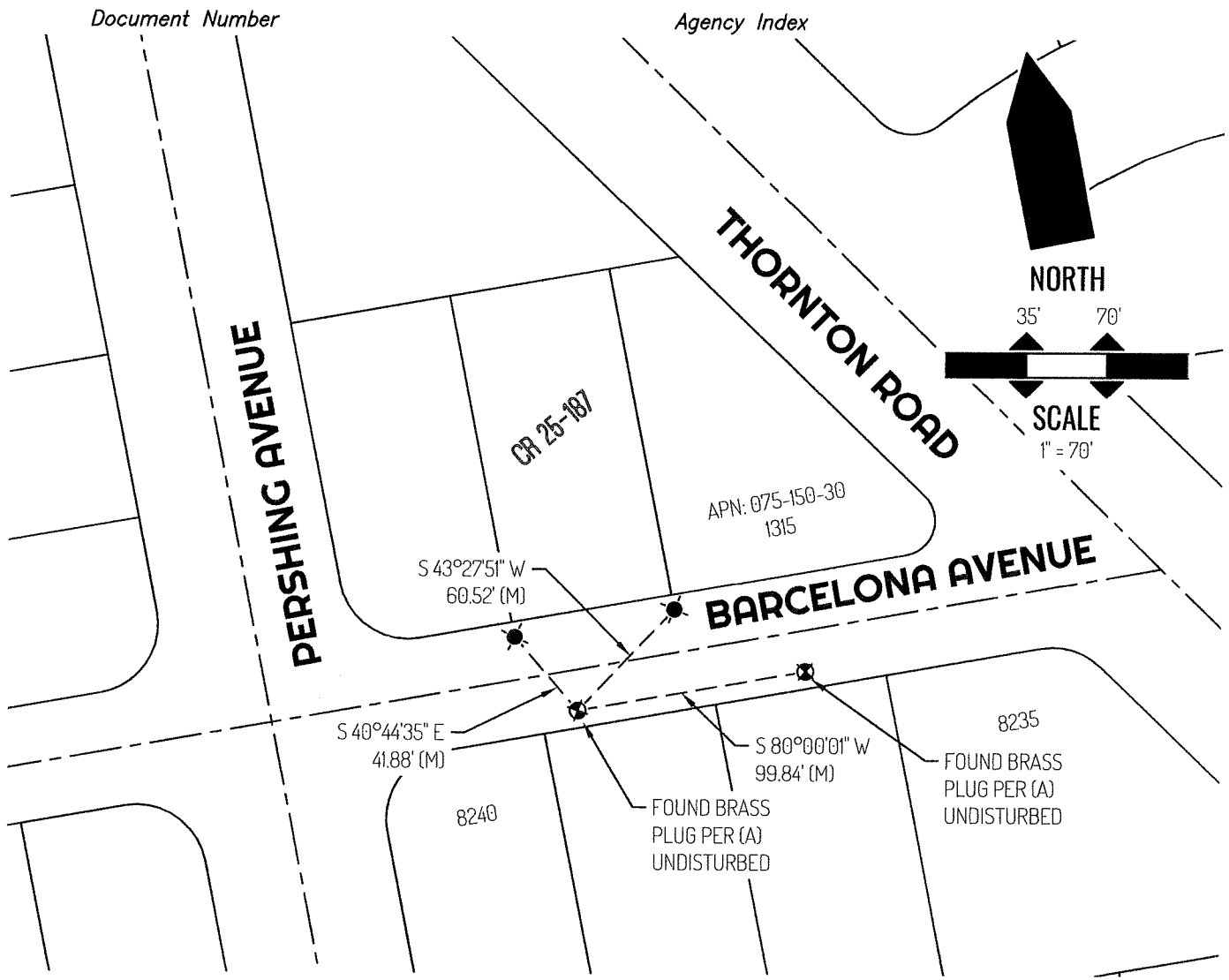


COUNTY SURVEYOR'S STATEMENT

This Corner Record was received February 23, 2026
 and examined and filed March 3, 2026
 Signed James E. Hart P.L.S. or R.C.E. No. 8657
 Title County Surveyor



County Surveyor's Comment



LEGEND

●	FOUND CHISELED CROSS PER (A) UNDISTURBED
⊙	FOUND CONTROL MONUMENT AS NOTED
1315	REFERENCE STREET ADDRESS
APN	TAX ASSESSOR PARCEL NUMBER
CR	CORNER RECORD, SAN JOAQUIN COUNTY SURVEYOR'S RECORDS
(M)	MEASURED
---	TIE LINE
———	LOT LINE
- - - - -	RIGHT-OF-WAY CENTERLINE

REFERENCE

(A) CORNER RECORD 25-187, SAN JOAQUIN COUNTY SURVEYOR'S RECORDS

CORNER RECORD

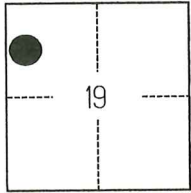
Agency Index CR-26-100
 Document Number _____

City of STOCKTON County of SAN JOAQUIN, California

Brief Legal Description FOUND MONUMENT SHOWN ON CORNER RECORD 25-184, SAN JOAQUIN COUNTY SURVEYOR'S RECORDS.

CORNER TYPE

COORDINATES (Optional)



C.M. WEBER GRANT

- Government Corner Control
 Meander Property
 Rancho Other

Date of Survey JULY 23, 2025

N. _____ E. _____

Elevation _____

Units Metric U.S. Survey Foot

Horizontal Datum _____

Zone _____ Epoch Date _____

Vertical Datum _____

Complies with Public Resources Code §§8801-8819

Complies with Public Resources Code §§8890-8902

PLS Act Ref.: 8765(d) 8771 8773 Other:

Corner/Monument: Left as found Established Rebuilt Pre-Construction

Found and tagged Reestablished Referenced Post-Construction

Narrative of corner identified and monument as found, set, reset, replaced, or removed:

See sheet #2 for description(s):

THE FOUND MONUMENT(S) SHOWN ON THIS CORNER RECORD WERE FOUND AT THE LOCATION OF THE CORNER(S) ON CORNER RECORD 25-184, SAN JOAQUIN COUNTY SURVEYOR'S RECORDS. I DID NOT VERIFY THE IDENTITY AND VALIDITY OF THE MONUMENT FOUND AS ACTUALLY MARKING THE PROPERTY CORNER.

SURVEYOR'S STATEMENT

This Corner Record was prepared by me or under my direction in conformance with the Professional Land Surveyors' Act on JULY 25, 2025.
 Signed [Signature] P.L.S. or R.C.E. No. 8489

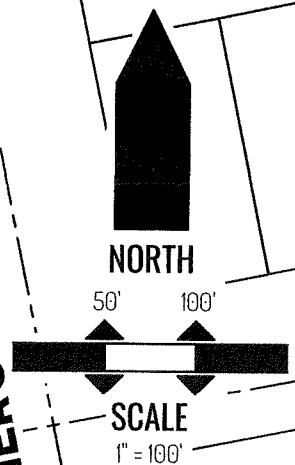
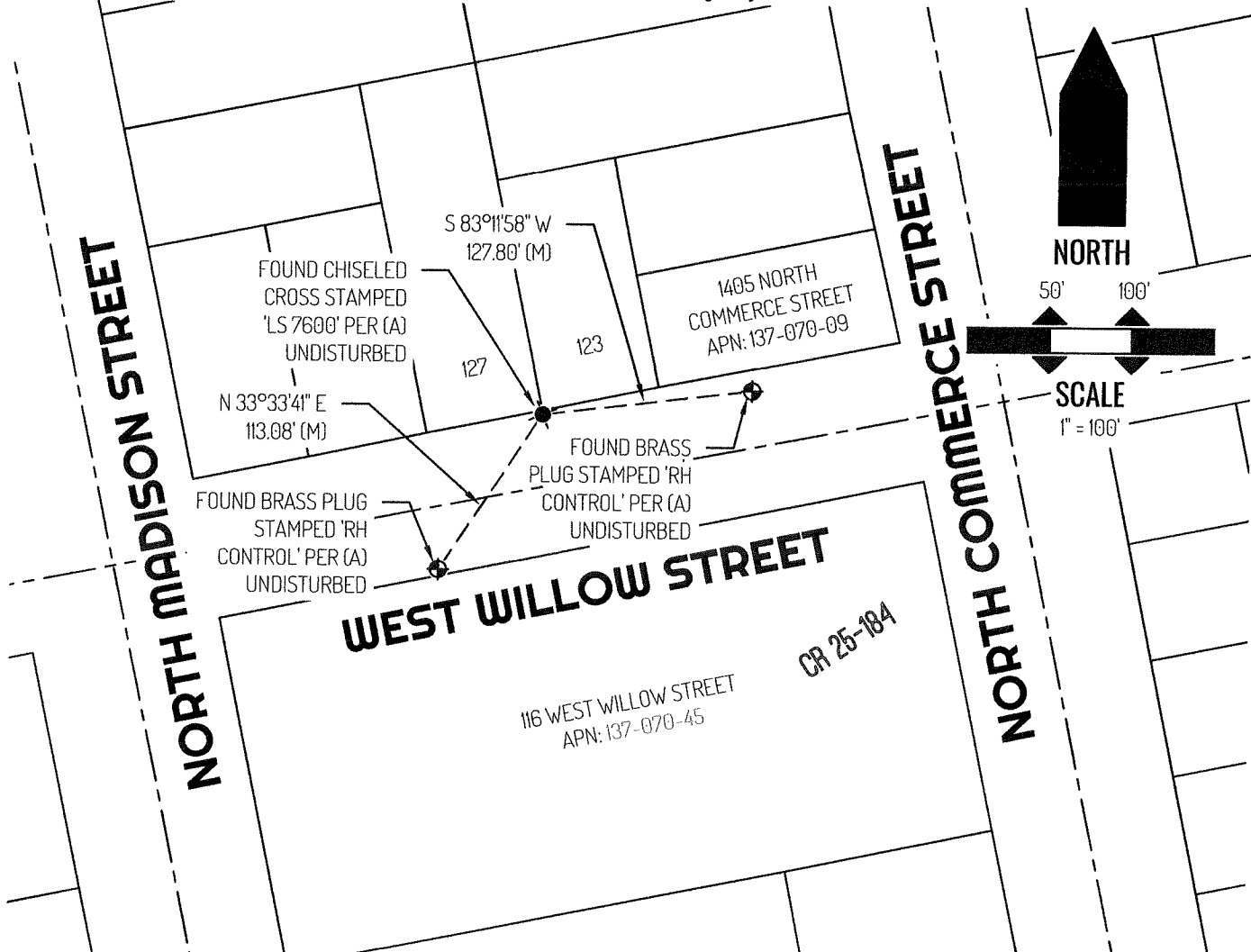


COUNTY SURVEYOR'S STATEMENT

This Corner Record was received February 23, 2026
 and examined and filed March 3, 2026.
 Signed James E. Hart P.L.S. or R.C.E. No. 8657
 Title County Surveyor



County Surveyor's Comment



LEGEND

	FOUND MONUMENT AS NOTED
	FOUND CONTROL MONUMENT AS NOTED
1337	REFERENCE STREET ADDRESS
CR	CORNER RECORD, SAN JOAQUIN COUNTY SURVEYOR'S RECORDS
APN	TAX ASSESSOR PARCEL NUMBER
(M)	MEASURED
	TIE LINE
	LOT LINE
	RIGHT-OF-WAY CENTERLINE

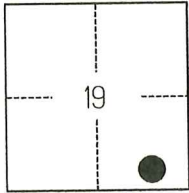
REFERENCE

(A) CORNER RECORD 25-184, SAN JOAQUIN COUNTY SURVEYOR'S RECORDS

CORNER RECORD

Agency Index CR-26-099

Document Number _____

City of STOCKTON County of SAN JOAQUIN, CaliforniaBrief Legal Description FOUND MONUMENT SHOWN ON CORNER RECORD 25-294, SAN JOAQUIN COUNTY SURVEYOR'S RECORDS.**CORNER TYPE****COORDINATES (Optional)**

C.M. WEBER GRANT

- Government Corner Control
 Meander Property
 Rancho Other

Date of Survey JULY 23, 2025

N. _____ E. _____

Elevation _____

Units Metric U.S. Survey Foot

Horizontal Datum _____

Zone _____ Epoch Date _____

Vertical Datum _____

 Complies with Public Resources Code §§8801-8819 Complies with Public Resources Code §§8890-8902PLS Act Ref.: 8765(d) 8771 8773 Other:Corner/Monument: Left as found Established Rebuilt Pre-Construction Found and tagged Reestablished Referenced Post-Construction

Narrative of corner identified and monument as found, set, reset, replaced, or removed:

 See sheet #2 for description(s):

THE FOUND MONUMENT(S) SHOWN ON THIS CORNER RECORD WERE FOUND AT THE LOCATION OF THE CORNER(S) ON CORNER RECORD 25-294, SAN JOAQUIN COUNTY SURVEYOR'S RECORDS. I DID NOT VERIFY THE IDENTITY AND VALIDITY OF THE MONUMENT FOUND AS ACTUALLY MARKING THE PROPERTY CORNER.

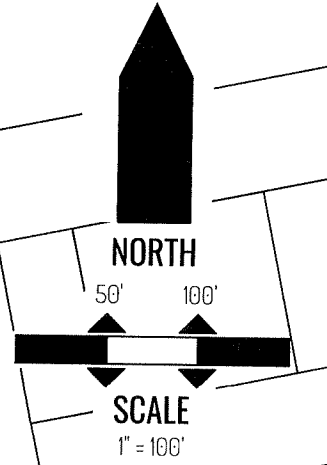
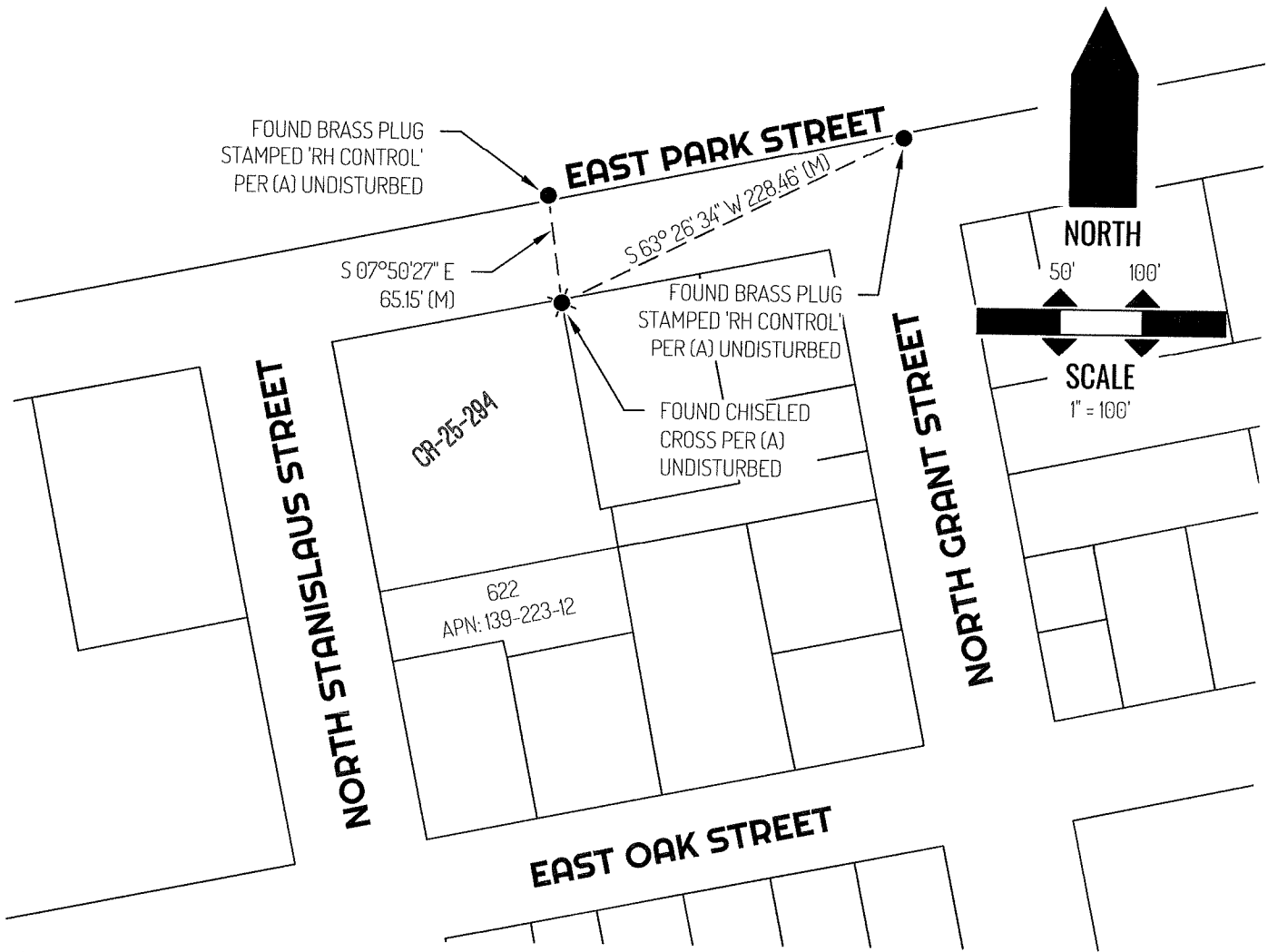
SURVEYOR'S STATEMENT

This Corner Record was prepared by me or under my direction in conformance with

the Professional Land Surveyors' Act on OCTOBER 14, 2025Signed [Signature] P.L.S. or R.C.E. No. 8489**COUNTY SURVEYOR'S STATEMENT**This Corner Record was received February 23, 2026and examined and filed March 3, 2026Signed James E. Hart P.L.S. or R.C.E. No. 8657Title County Surveyor

County Surveyor's Comment _____





LEGEND

⊕	FOUND CHISELED CROSS AS NOTED
●	FOUND MONUMENT AS NOTED
622	REFERENCE STREET ADDRESS
CR	CORNER RECORD, SAN JOAQUIN COUNTY SURVEYOR'S RECORDS
APN	TAX ASSESSOR PARCEL NUMBER
(M)	MEASURED
---	TIE LINE
—	LOT LINE

REFERENCE

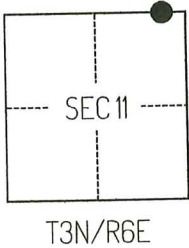
(A) CORNER RECORD 25-294, SAN JOAQUIN COUNTY SURVEYOR'S RECORDS

CORNER RECORD

Agency Index CR-26-098
 Document Number _____

City of LODI County of SAN JOAQUIN, California

Brief Legal Description FOUND MONUMENT ALONG THE SOUTHERN RIGHT-OF-WAY OF LODI AVENUE, PER CORNER RECORD 24-209, SAN JOAQUIN COUNTY SURVEYOR'S RECORDS.



CORNER TYPE

- Government Corner Control
 Meander Property
 Rancho Other

Date of Survey May 6, 2025

COORDINATES (Optional)

N. _____ E. _____
 Elevation _____
 Units Metric U.S. Survey Foot
 Horizontal Datum _____
 Zone _____ Epoch Date _____
 Vertical Datum _____
 Complies with Public Resources Code §§8801-8819
 Complies with Public Resources Code §§8890-8902

- PLS Act Ref.:** 8765(d) 8771 8773 Other:
Corner/Monument: Left as found Established Rebuilt Pre-Construction
 Found and tagged Reestablished Referenced Post-Construction

Narrative of corner identified and monument as found, set, reset, replaced, or removed:
 See sheet #2 for description(s):

THE FOUND MONUMENT(S) SHOWN ON THIS CORNER RECORD WERE FOUND AT THE LOCATION OF THE CORNER(S) ON CR 24-209, SAN JOAQUIN COUNTY SURVEYOR'S RECORDS. I DID NOT VERIFY THE IDENTITY AND VALIDITY OF THE MONUMENT FOUND AS ACTUALLY MARKING THE PROPERTY CORNER.

SURVEYOR'S STATEMENT

This Corner Record was prepared by me or under my direction in conformance with the Professional Land Surveyors' Act on May 28, 2025.
 Signed [Signature] P.L.S. or R.C.E. No. 8489

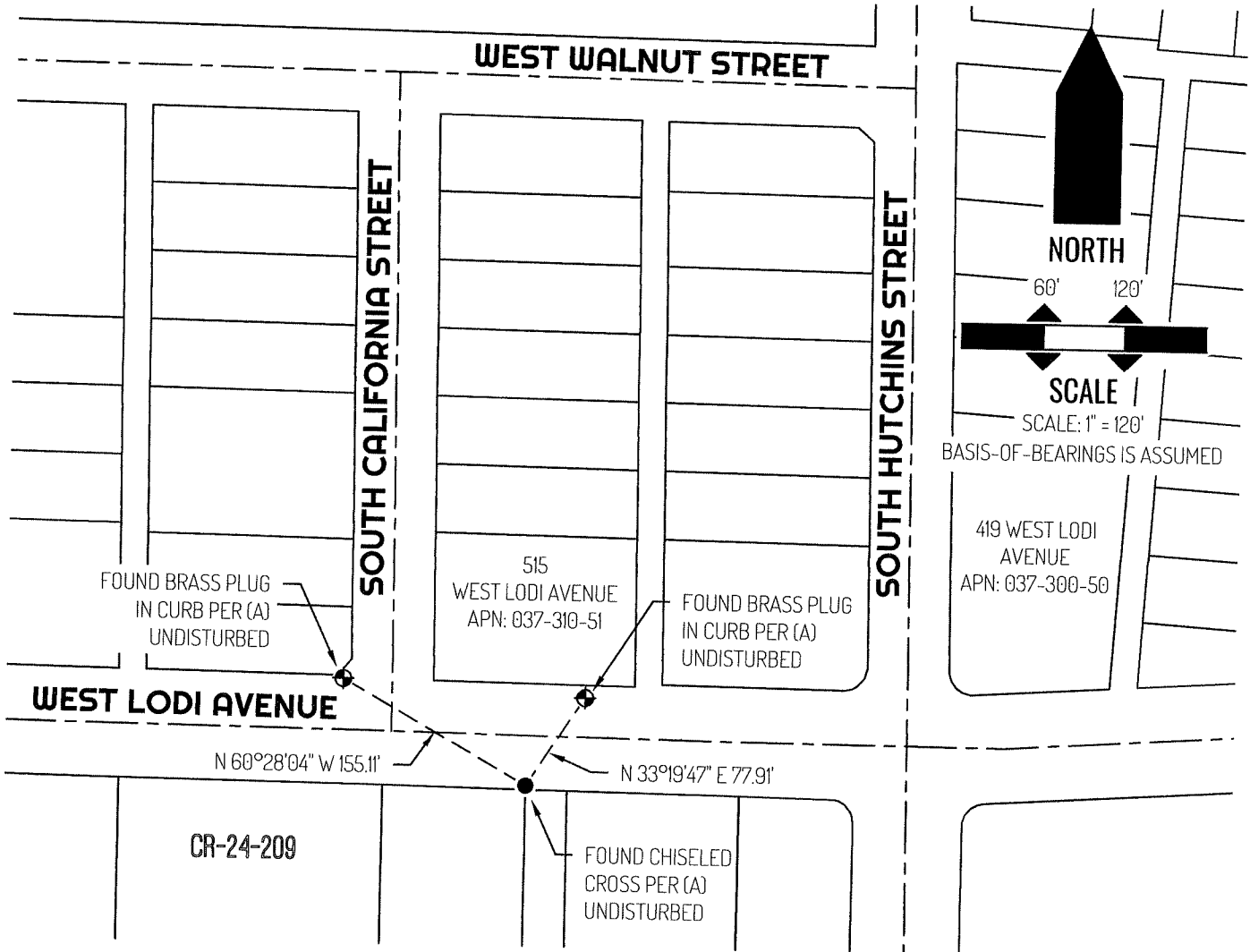


COUNTY SURVEYOR'S STATEMENT

This Corner Record was received February 23, 2026
 and examined and filed March 3, 2026.
 Signed James E. Hart P.L.S. or R.C.E. No. 8657
 Title County Surveyor



County Surveyor's Comment



LEGEND

- FOUND MONUMENT AS NOTED
- ⊕ FOUND CONTROL POINT AS NOTED
- 515 REFERENCE STREET ADDRESS
- CR CORNER RECORD, SAN JOAQUIN COUNTY SURVEYOR'S RECORDS
- APN TAX ASSESSOR PARCEL NUMBER
- TIE LINE
- ___ LOT LINE
- - - RIGHT-OF-WAY CENTERLINE

REFERENCE

(A) CORNER RECORD 24-209, SAN JOAQUIN COUNTY SURVEYOR'S RECORDS

CORNER RECORD

Agency Index CR-26-097
Document Number _____

City of STOCKTON County of SAN JOAQUIN, California

Brief Legal Description FOUND MONUMENT AS SHOWN IN BOOK 11 OF PARCEL MAPS, PAGE 141, SAN JOAQUIN COUNTY RECORDS.

CORNER TYPE

COORDINATES (Optional)



T2N/R6E

- Government Corner
- Meander
- Rancho
- Control
- Property
- Other

Date of Survey NOVEMBER 26, 2025

N. _____ E. _____

Elevation _____

Units Metric U.S. Survey Foot

Horizontal Datum _____

Zone _____ Epoch Date _____

Vertical Datum _____

Complies with Public Resources Code §§8801-8819

Complies with Public Resources Code §§8890-8902

PLS Act Ref.: 8765(d) 8771 8773 Other:

Corner/Monument: Left as found Established Rebuilt Pre-Construction

Found and tagged Reestablished Referenced Post-Construction

Narrative of corner identified and monument as found, set, reset, replaced, or removed:

See sheet #2 for description(s):

THE FOUND MONUMENT(S) SHOWN ON THIS CORNER RECORD WERE FOUND IN THE APPROXIMATE LOCATION OF THE CORNER(S) ON 11-PM-141, SAN JOAQUIN COUNTY RECORDS. I DID NOT VERIFY THE IDENTITY AND VALIDITY OF THE MONUMENT(S) FOUND AS ACTUALLY MARKING THE PROPERTY CORNER.

SURVEYOR'S STATEMENT

This Corner Record was prepared by me or under my direction in conformance with the Professional Land Surveyors' Act on DECEMBER 1, 2025.
Signed [Signature] P.L.S. or R.C.E. No. 8489

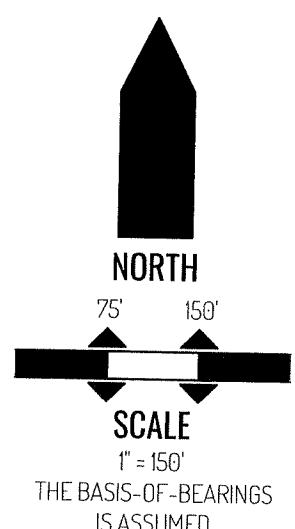
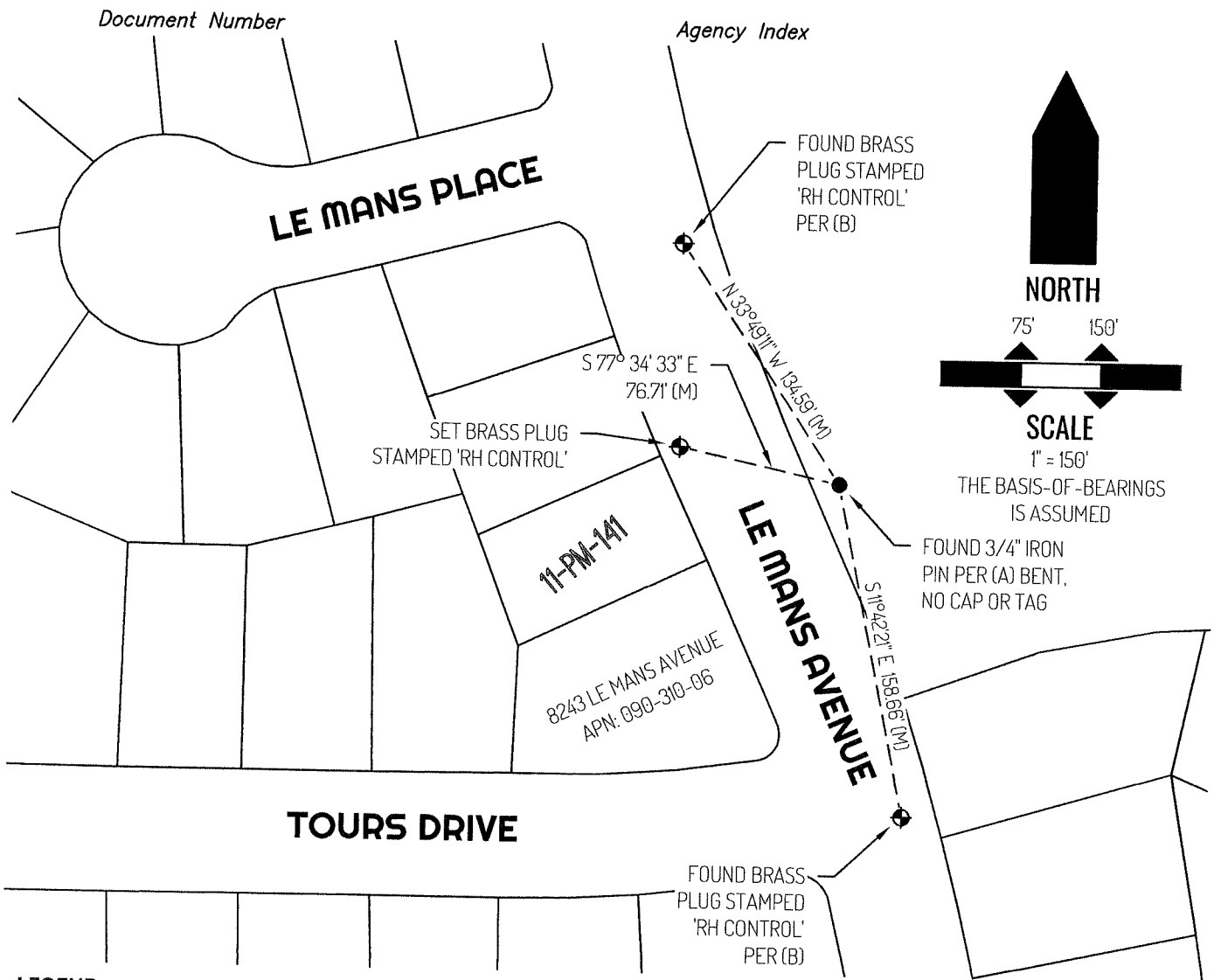


COUNTY SURVEYOR'S STATEMENT

This Corner Record was received February 23, 2026
and examined and filed March 3, 2026.
Signed James E. Hart P.L.S. or R.C.E. No. 8657
Title County Surveyor



County Surveyor's Comment



LEGEND

●	FOUND MONUMENT AS NOTED
⊕	BRASS PLUG STAMPED "RH CONTROL" AS NOTED
8243	REFERENCE STREET ADDRESS
PM	PARCEL MAPS, SAN JOAQUIN COUNTY RECORDS
APN	TAX ASSESSOR PARCEL NUMBER
(M)	MEASURED
---	TIE LINE
---	LOT LINE

SURVEYOR NOTE

THIS CORNER RECORD IS BEING FILED TO FULFILL THE PRE-CONSTRUCTION MONUMENT PRESERVATION REQUIREMENTS OF SECTION 8771 OF THE CALIFORNIA BUSINESS AND PROFESSIONS CODE. IT IS NOT THE RESULT OF A FULLY RESOLVED BOUNDARY SURVEY FOR ANY PARCEL OF REAL PROPERTY.

REFERENCE(S)

- (A) BOOK 11 OF PARCEL MAPS, PAGE 141, SAN JOAQUIN COUNTY RECORDS
- (B) UNRECORDED SURVEY