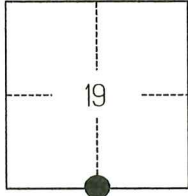


CORNER RECORD

Agency Index CR-26-104
 Document Number _____

City of _____ County of SAN JOAQUIN, California

Brief Legal Description FOUND MONUMENT ON THE NORTH SIDE OF LONE TREE ROAD APPROXIMATELY 2650 FEET WEST OF BRENNAN ROAD PER CORNER RECORD 25-156, SAN JOAQUIN COUNTY SURVEYOR'S RECORDS.



T1S/R9E

CORNER TYPE

- Government Corner Control
 Meander Property
 Rancho Other

Date of Survey JULY 31, 2025

COORDINATES (Optional)

N. _____ E. _____

Elevation _____

Units Metric U.S. Survey Foot

Horizontal Datum _____

Zone _____ Epoch Date _____

Vertical Datum _____

Complies with Public Resources Code §§8801-8819

Complies with Public Resources Code §§8890-8902

PLS Act Ref.: 8765(d) 8771 8773 Other:

Corner/
Monument: Left as found Established Rebuilt Pre-Construction
 Found and tagged Reestablished Referenced Post-Construction

Narrative of corner identified and monument as found, set, reset, replaced, or removed:

See sheet #2 for description(s):

THE FOUND MONUMENT SHOWN ON THIS CORNER RECORD WAS FOUND AT THE LOCATION OF THE PROPERTY CORNER PER CORNER RECORD 25-156, SAN JOAQUIN COUNTY SURVEYOR'S RECORDS. I DID NOT VERIFY THE IDENTITY AND VALIDITY OF THE MONUMENT FOUND AS ACTUALLY MARKING THE PROPERTY CORNER.

SURVEYOR'S STATEMENT

This Corner Record was prepared by me or under my direction in conformance with
 the Professional Land Surveyors' Act on AUGUST 19, 2025
 Signed [Signature] P.L.S. or R.C.E. No. 8489

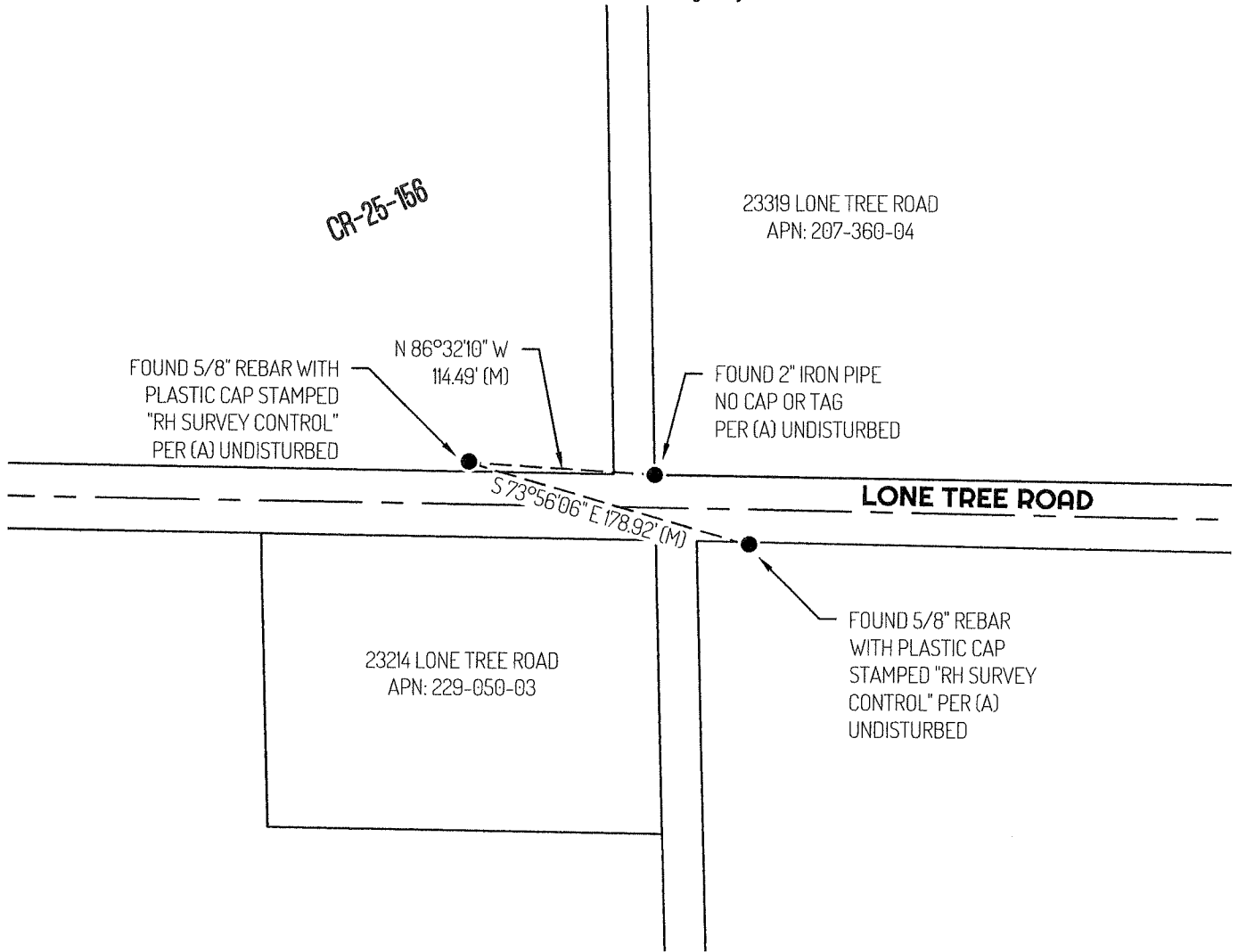


COUNTY SURVEYOR'S STATEMENT

This Corner Record was received February 23, 2026
 and examined and filed March 3, 2026
 Signed James E. Hart P.L.S. or R.C.E. No. 8657
 Title County Surveyor



County Surveyor's Comment



LEGEND

●	FOUND MONUMENT AS NOTED
23319	REFERENCE STREET ADDRESS
S.J.C.R.	SAN JOAQUIN COUNTY RECORDS
APN	TAX ASSESSOR PARCEL NUMBER
CR	CORNER RECORD, SAN JOAQUIN COUNTY SURVEYOR'S RECORDS
(M)	MEASURED
---	TIE LINE
---	LOT LINE
---	RIGHT-OF-WAY CENTERLINE

REFERENCE

(A) CORNER RECORD 25-156, SAN JOAQUIN COUNTY SURVEYOR'S RECORDS.

