

# CORNER RECORD

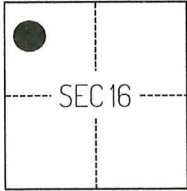
Agency Index CR-26-101  
Document Number \_\_\_\_\_

City of \_\_\_\_\_ County of SAN JOAQUIN, California

Brief Legal Description FOUND MONUMENTS PER CORNER RECORD 25-187, SAN JOAQUIN COUNTY SURVEYOR'S RECORDS.

### CORNER TYPE

### COORDINATES (Optional)



T2N/R6E

- Government Corner
- Meander
- Rancho
- Control
- Property
- Other

Date of Survey JULY 23, 2025

N. \_\_\_\_\_ E. \_\_\_\_\_

Elevation \_\_\_\_\_

Units  Metric  U.S. Survey Foot

Horizontal Datum \_\_\_\_\_

Zone \_\_\_\_\_ Epoch Date \_\_\_\_\_

Vertical Datum \_\_\_\_\_

Complies with Public Resources Code §§8801-8819

Complies with Public Resources Code §§8890-8902

PLS Act Ref.:  8765(d)  8771  8773  Other:

Corner/Monument:  Left as found  Established  Rebuilt  Pre-Construction  
 Found and tagged  Reestablished  Referenced  Post-Construction

Narrative of corner identified and monument as found, set, reset, replaced, or removed:

See sheet #2 for description(s):

THE FOUND MONUMENT(S) SHOWN ON THIS CORNER RECORD ARE FOUND AT THE LOCATION OF THE CORNER(S) ON CORNER RECORD 25-187, SAN JOAQUIN COUNTY SURVEYOR'S RECORDS. I DID NOT VERIFY THE IDENTITY AND VALIDITY OF THE MONUMENT(S) FOUND AS ACTUALLY MARKING THE PROPERTY CORNER.

### SURVEYOR'S STATEMENT

This Corner Record was prepared by me or under my direction in conformance with  
 the Professional Land Surveyors' Act on JULY 25, 2025  
 Signed Scott L. Blake P.L.S. or R.C.E. No. 8489

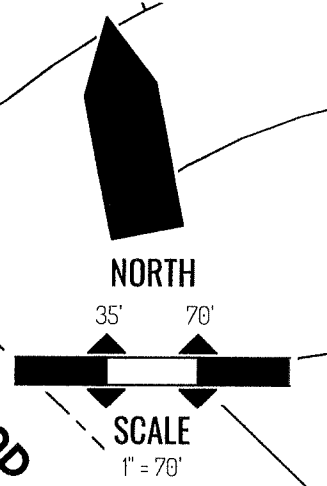
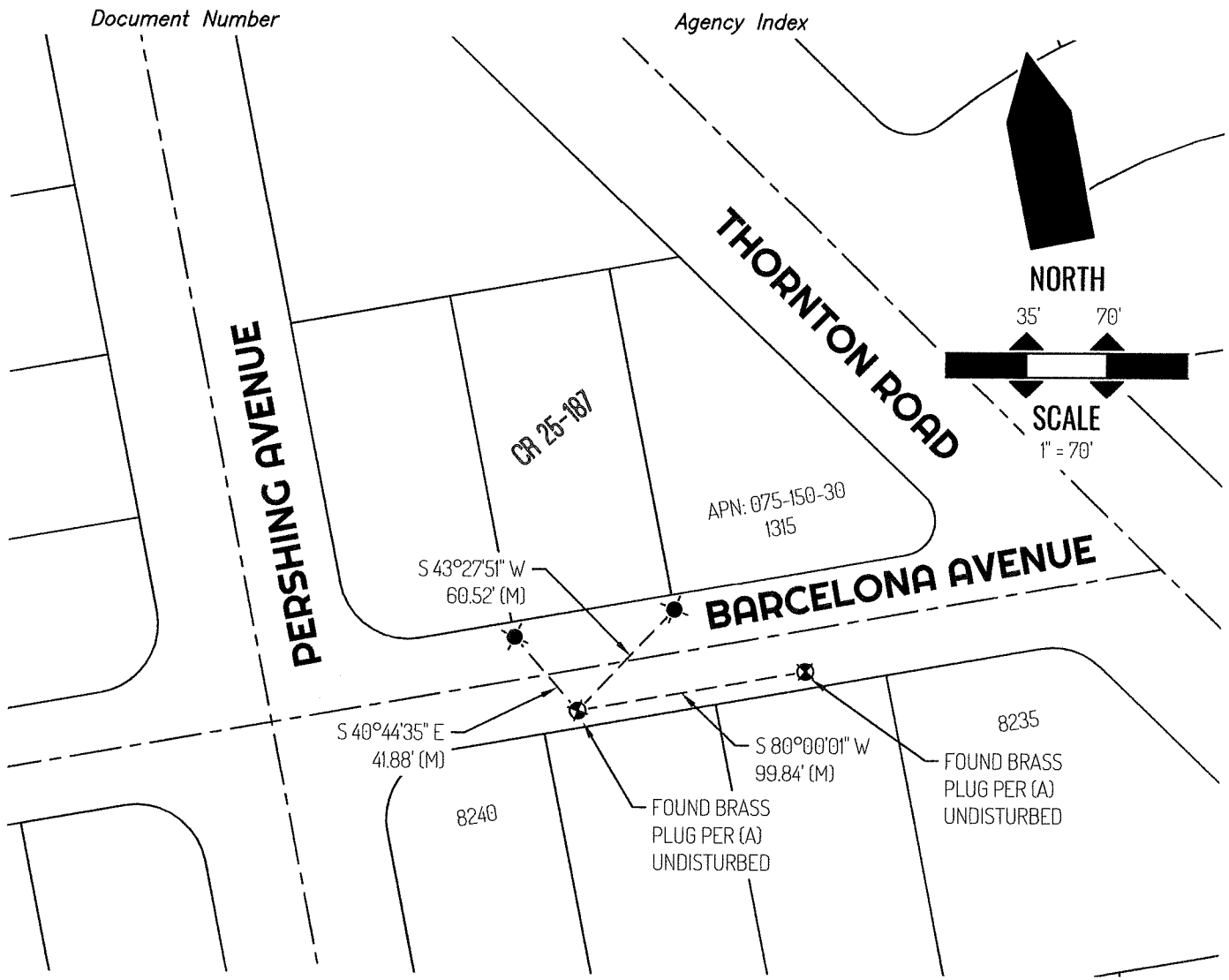


### COUNTY SURVEYOR'S STATEMENT

This Corner Record was received February 23, 2026  
 and examined and filed March 3, 2026  
 Signed James E. Hart P.L.S. or R.C.E. No. 8657  
 Title County Surveyor



County Surveyor's Comment



**LEGEND**

●	FOUND CHISELED CROSS PER (A) UNDISTURBED
⊙	FOUND CONTROL MONUMENT AS NOTED
1315	REFERENCE STREET ADDRESS
APN	TAX ASSESSOR PARCEL NUMBER
CR	CORNER RECORD, SAN JOAQUIN COUNTY SURVEYOR'S RECORDS
(M)	MEASURED
---	TIE LINE
——	LOT LINE
- - - -	RIGHT-OF-WAY CENTERLINE

**REFERENCE**

(A) CORNER RECORD 25-187, SAN JOAQUIN COUNTY SURVEYOR'S RECORDS