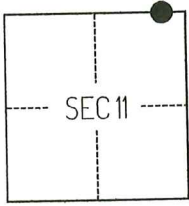


# CORNER RECORD

Agency Index CR-26-098  
 Document Number \_\_\_\_\_

City of LODI County of SAN JOAQUIN, California

Brief Legal Description FOUND MONUMENT ALONG THE SOUTHERN RIGHT-OF-WAY OF LODI AVENUE, PER CORNER RECORD 24-209, SAN JOAQUIN COUNTY SURVEYOR'S RECORDS.



T3N/R6E

### CORNER TYPE

- Government Corner     Control  
 Meander                     Property  
 Rancho                          Other

Date of Survey May 6, 2025

### COORDINATES (Optional)

N. \_\_\_\_\_ E. \_\_\_\_\_  
 Elevation \_\_\_\_\_  
 Units  Metric  U.S. Survey Foot  
 Horizontal Datum \_\_\_\_\_  
 Zone \_\_\_\_\_ Epoch Date \_\_\_\_\_  
 Vertical Datum \_\_\_\_\_  
 Complies with Public Resources Code §§8801-8819  
 Complies with Public Resources Code §§8890-8902

- PLS Act Ref.:**     8765(d)     8771     8773     Other:  
**Corner/Monument:**     Left as found     Established     Rebuilt     Pre-Construction  
                                    Found and tagged     Reestablished     Referenced     Post-Construction

Narrative of corner identified and monument as found, set, reset, replaced, or removed:  
 See sheet #2 for description(s):

THE FOUND MONUMENT(S) SHOWN ON THIS CORNER RECORD WERE FOUND AT THE LOCATION OF THE CORNER(S) ON CR 24-209, SAN JOAQUIN COUNTY SURVEYOR'S RECORDS. I DID NOT VERIFY THE IDENTITY AND VALIDITY OF THE MONUMENT FOUND AS ACTUALLY MARKING THE PROPERTY CORNER.

### SURVEYOR'S STATEMENT

This Corner Record was prepared by me or under my direction in conformance with the Professional Land Surveyors' Act on May 28, 2025.  
 Signed [Signature] P.L.S. or R.C.E. No. 8489

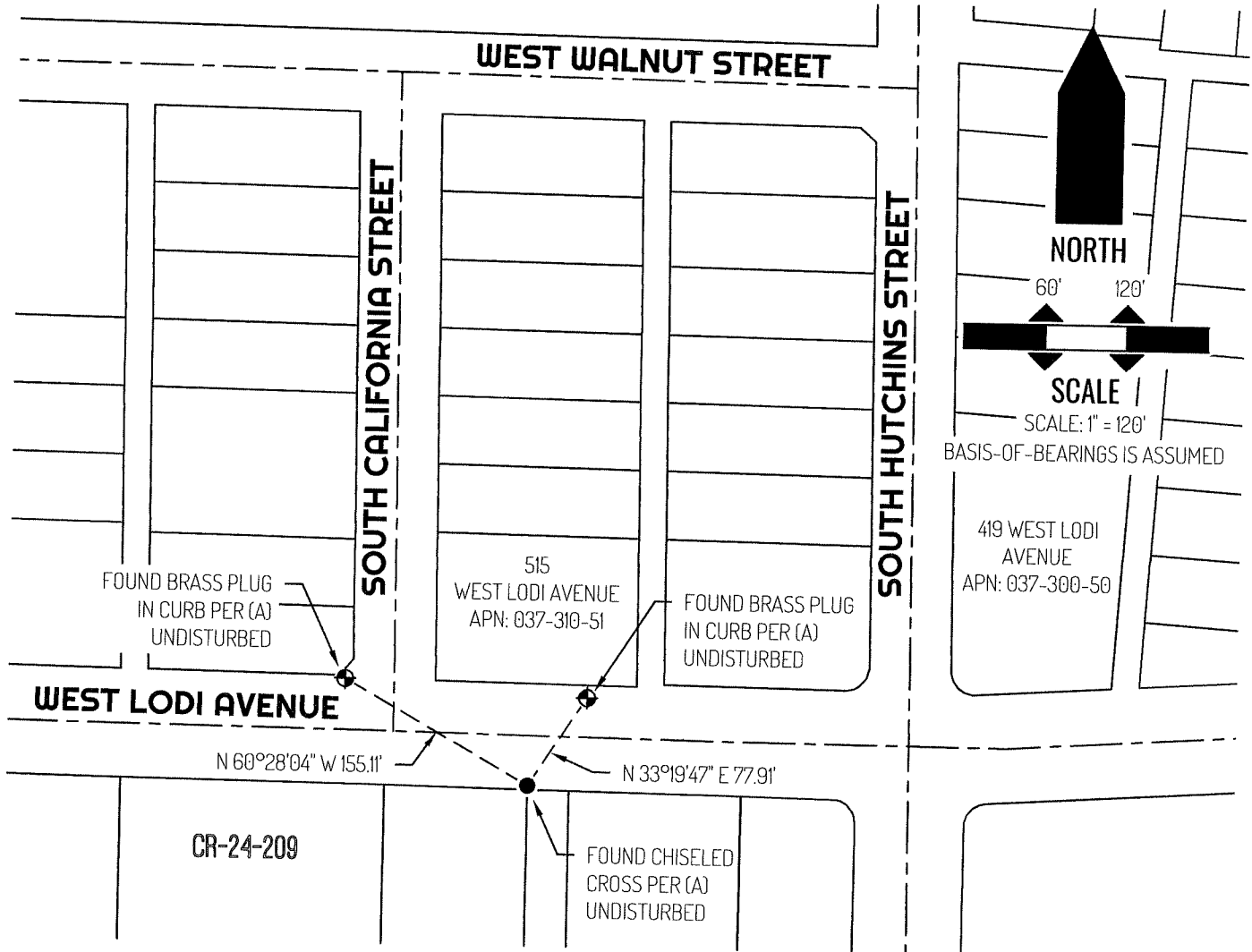


### COUNTY SURVEYOR'S STATEMENT

This Corner Record was received February 23, 2026  
 and examined and filed March 3, 2026.  
 Signed James E. Hart P.L.S. or R.C.E. No. 8657  
 Title County Surveyor



County Surveyor's Comment



**NORTH**

60' 120'

**SCALE** |

SCALE: 1" = 120'

BASIS-OF-BEARINGS IS ASSUMED

419 WEST LODI AVENUE  
APN: 037-300-50

**LEGEND**

- FOUND MONUMENT AS NOTED
- ⊕ FOUND CONTROL POINT AS NOTED
- 515 REFERENCE STREET ADDRESS
- CR CORNER RECORD, SAN JOAQUIN COUNTY SURVEYOR'S RECORDS
- APN TAX ASSESSOR PARCEL NUMBER
- - - - - TIE LINE
- ==== LOT LINE
- - - - - RIGHT-OF-WAY CENTERLINE

**REFERENCE**

(A) CORNER RECORD 24-209, SAN JOAQUIN COUNTY SURVEYOR'S RECORDS