

# CORNER RECORD

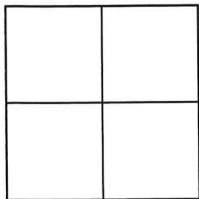
Agency Index CR-26-096

Document Number \_\_\_\_\_

City of MANTECA

County of SAN JOAQUIN, California

Brief Legal Description PORTION OF LOTS 12 & 13 IN BLOCK 1 VOL 9 OF MAPS AND PLATS PAGE 6



### CORNER TYPE

- Government Corner
- Meander
- Rancho
- Control
- Property
- Other

Date of Survey 12/30/2025

### COORDINATES (Optional)

N. \_\_\_\_\_ E. \_\_\_\_\_

Elevation \_\_\_\_\_

Units Metric  U.S. Survey Foot

Horizontal Datum \_\_\_\_\_

Zone \_\_\_\_\_ Epoch Date \_\_\_\_\_

Vertical Datum \_\_\_\_\_

- Complies with Public Resources Code §§8801-8819
- Complies with Public Resources Code §§8890-8902

PLS Act Ref:  8765(d)  8771  8773  Other:

Corner/Monument:  Left as found  Established  Rebuilt  Pre-Construction  
 Found and tagged  Reestablished  Referenced  Post-Construction

Narrative of corner identified and monument as found, set, reset, replaced, or removed:

See sheet #2 for description (s):

THIS MONUMENT WAS RECOVERED IN GOOD CONDITION FOLLOWING NEARBY CONSTRUCTION ACTIVITY. THE TIES SHOWN HEREON ARE PROVIDED SOLELY FOR THE PURPOSE OF PERPETUATING THE FOUND MONUMENTATION. NO CLAIM IS MADE REGARDING THE RELATIONSHIP OF THE POINTS OR LINES SHOWN HEREON.

### SURVEYOR'S STATEMENT

This Corner Record was prepared by me or under my direction in conformance with the Professional Land Surveyors' Act on 01/06/2026

Signed [Signature] P.L.S. or R.C.E. No. LS 9384



### COUNTY SURVEYOR'S STATEMENT

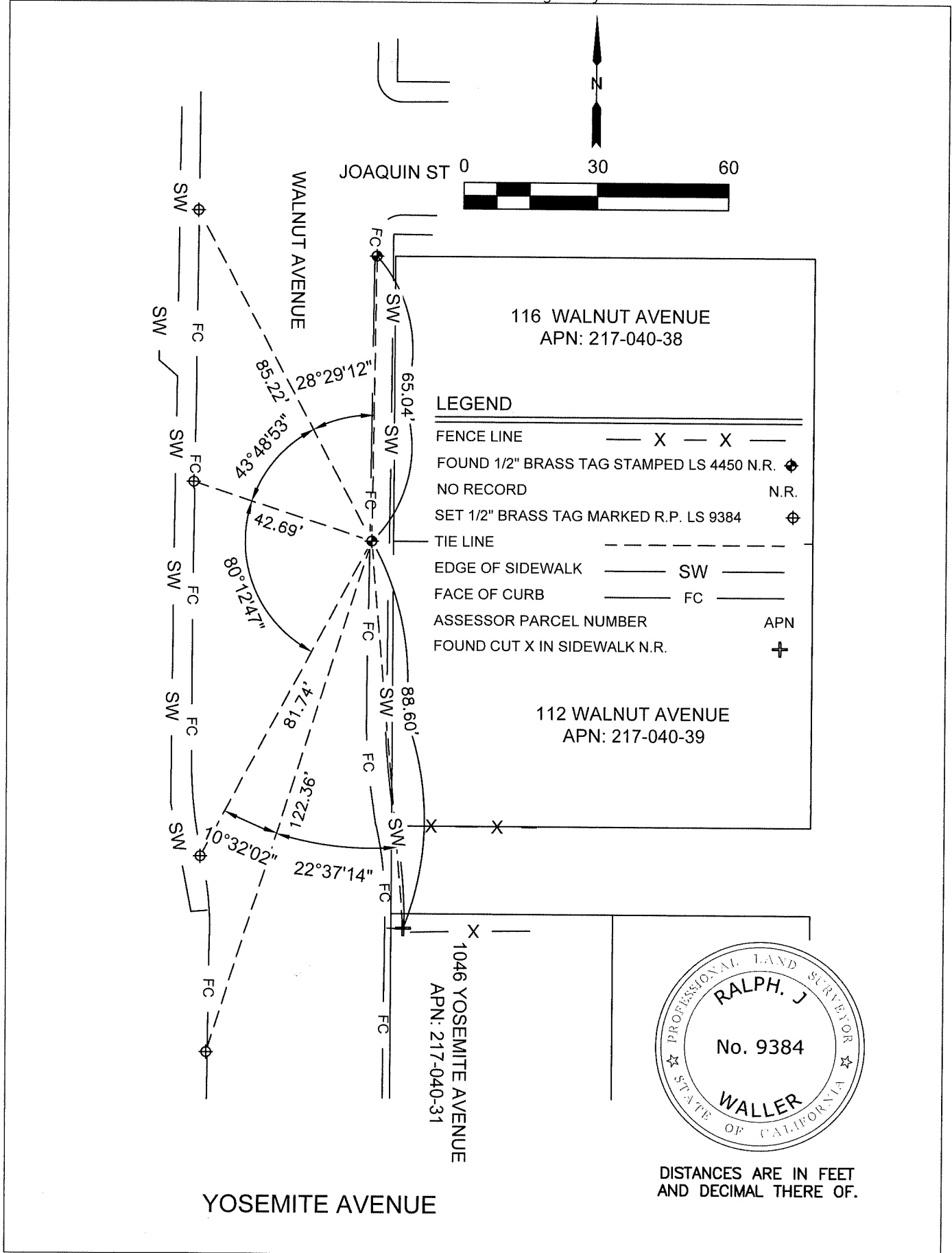
This Corner Record was received January 27, 2026 and examined and filed February 26, 2026

Signed James E. Hart P.L.S. or R.C.E. No. 8657

Title County Surveyor



County Surveyor's Comment



DISTANCES ARE IN FEET  
 AND DECIMAL THERE OF.