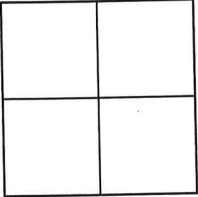


CORNER RECORD

Agency Index CR-26-095
Document Number _____
County of SAN JOAQUIN, California

City of STOCKTON

Brief Legal Description BLOCK 137 EAST OF CENTER



CORNER TYPE

- Government Corner
- Meander
- Rancho
- Control
- Property
- Other

Date of Survey 12/30/2025

COORDINATES (Optional)

N. _____ E. _____
 Elevation _____
 Units Metric U.S. Survey Foot
 Horizontal Datum _____
 Zone _____ Epoch Date _____
 Vertical Datum _____

- Complies with Public Resources Code §§8801-8819
- Complies with Public Resources Code §§8890-8902

PLS Act Ref: 8765(d) 8771 8773 Other:
 Corner/Monument: Left as found Established Rebuilt Pre-Construction
 Found and tagged Reestablished Referenced Post-Construction

Narrative of corner identified and monument as found, set, reset, replaced, or removed:
 See sheet #2 for description (s):

FOUND POINTS AS SHOWN ON PAGE 2. THIS POINT WAS FOUND UNDISTURBED AFTER CONSTRUCTION WAS COMPLETED. THE TIES SHOWN HEREON ARE FOR THE PURPOSE OF PERPETUATING FOUND MONUMENTATION. NO CLAIM IS MADE AS TO THE RELATIONSHIP OF THE POINTS OR LINES SHOWN HEREON TO TRUE BOUNDARY LOCATION.

SURVEYOR'S STATEMENT

This Corner Record was prepared by me or under my direction in conformance with the Professional Land Surveyors' Act on 1/4/2026

Signed [Signature] P.L.S. or R.C.E. No. LS 9384



COUNTY SURVEYOR'S STATEMENT

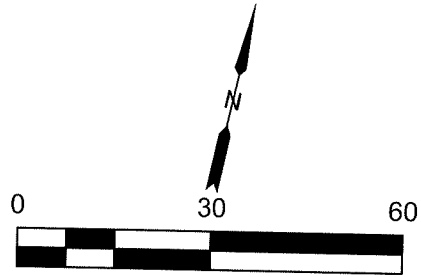
This Corner Record was received January 27, 2026
 and examined and filed February 26, 2026

Signed James E. Hart P.L.S. or R.C.E. No. 8657
 Title County Surveyor



County Surveyor's Comment

ROSE ST
↑



LEGEND

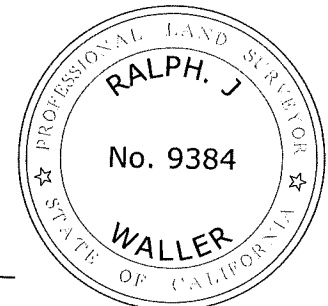
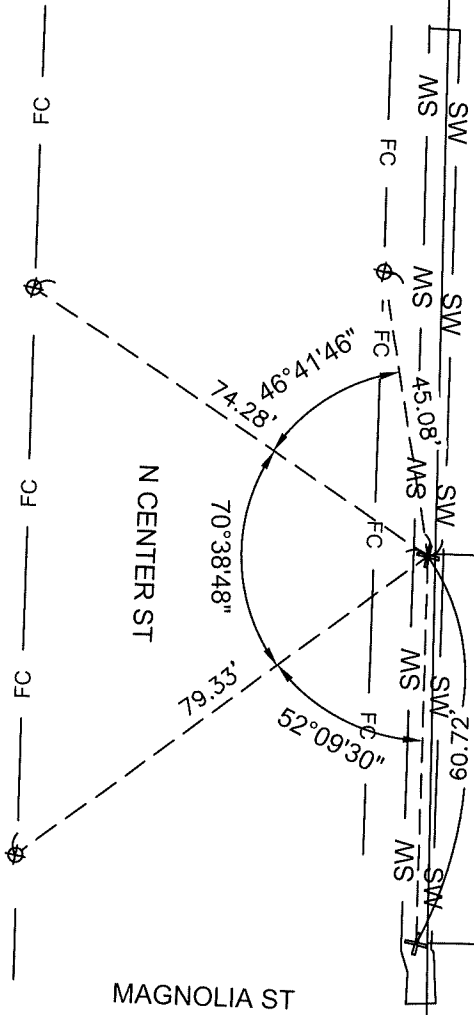
These standard symbols will be found in the drawing.

- SET 1/2" BRASS TAG MARKED R.P. LS 9384 \oplus
- BOUNDARY LINE _____
- TIE LINE - - - - -
- EDGE OF SIDEWALK — SW — SW —
- FACE OF CURB — FC — FC —
- FOUND CUT X NO RECORD \oplus
- ASSESSOR PARCEL NUMBER APN

APN: 139-030-62
1146 N CENTER ST

APN: 139-030-50
1118 N CENTER ST

APN: 139-030-52
1112 N CENTER ST



DISTANCES ARE IN FEET AND DECIMAL THERE OF.