

CORNER RECORD

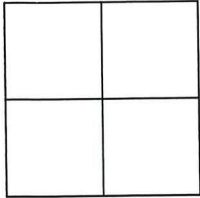
Agency Index CR-26-094

Document Number _____

City of MANTECA

County of SAN JOAQUIN, California

Brief Legal Description CITY OF MANTECA BENCHMARK # 48



CORNER TYPE

- Government Corner
- Control
- Meander
- Property
- Rancho
- Other

Date of Survey 12/30/2025

COORDINATES (Optional)

N. _____ E. _____

Elevation _____

Units Metric U.S. Survey Foot

Horizontal Datum _____

Zone _____ Epoch Date _____

Vertical Datum _____

Complies with Public Resources Code §§8801-8819

Complies with Public Resources Code §§8890-8902

PLS Act Ref: 8765(d) 8771 8773 Other:

Corner/Monument: Left as found Established Rebuilt Pre-Construction

Found and tagged Reestablished Referenced Post-Construction

Narrative of corner identified and monument as found, set, reset, replaced, or removed:

See sheet #2 for description (s):

THIS MONUMENT WAS RECOVERED IN GOOD CONDITION FOLLOWING NEARBY CONSTRUCTION ACTIVITY. THE TIES SHOWN HEREON ARE PROVIDED SOLELY FOR THE PURPOSE OF PERPETUATING THE FOUND MONUMENTATION. NO CLAIM IS MADE REGARDING THE RELATIONSHIP OF THE POINTS OR LINES SHOWN HEREON.

SURVEYOR'S STATEMENT

This Corner Record was prepared by me or under my direction in conformance with the Professional Land Surveyors' Act on 1/6/2026

Signed [Signature] P.L.S. or R.C.E. No. LS 9384



COUNTY SURVEYOR'S STATEMENT

This Corner Record was received January 27, 2026

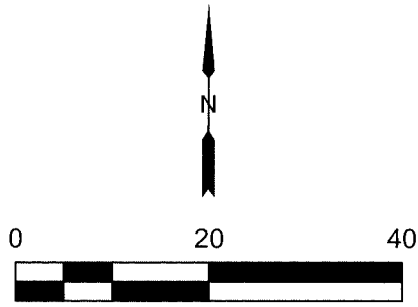
and examined and filed February 26, 2026

Signed James E. Hart P.L.S. or R.C.E. No. 8657

Title County Surveyor



County Surveyor's Comment

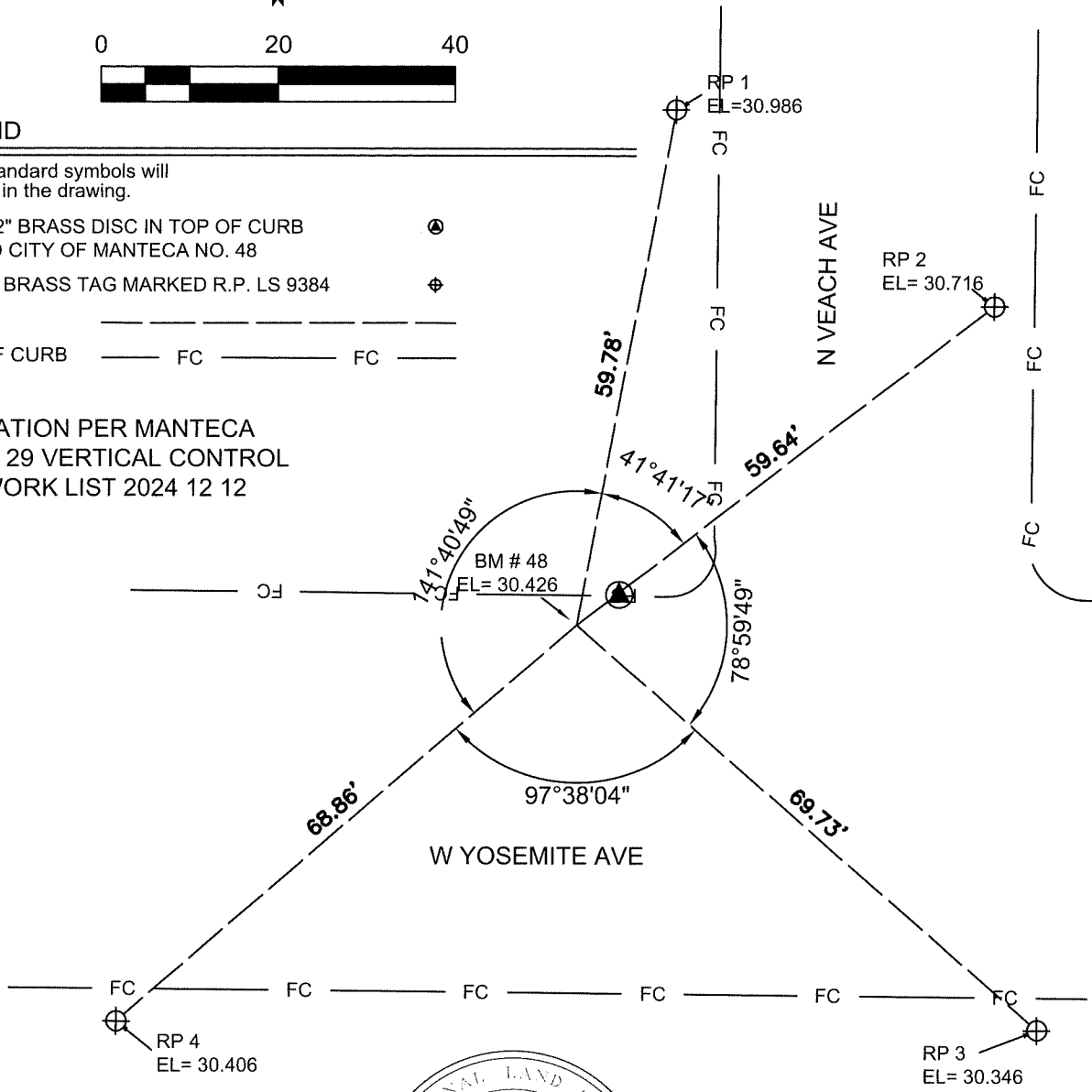


LEGEND

These standard symbols will be found in the drawing.

- FOUND 2" BRASS DISC IN TOP OF CURB MARKED CITY OF MANTECA NO. 48
- SET 1/2" BRASS TAG MARKED R.P. LS 9384
- TIE LINE
- FACE OF CURB

ELEVATION PER MANTECA
NAVD 29 VERTICAL CONTROL
NETWORK LIST 2024 12 12



DISTANCES ARE IN FEET
AND DECIMAL THERE OF.