

CORNER RECORD

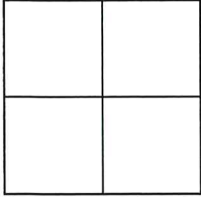
Agency Index CR-26-093

Document Number _____

City of MANTECA

County of SAN JOAQUIN, California

Brief Legal Description PORTION OF THE NORTHWEST QUARTER OF SECTION 5, TOWNSHIP 2 SOUTH, RANGE 7 EAST, MOUNT DIABLO BASE AND MERIDIAN



CORNER TYPE

- Government Corner
- Meander
- Rancho
- Control
- Property
- Other

Date of Survey 12/30/2025

COORDINATES (Optional)

N. _____ E. _____

Elevation _____

Units Metric U.S. Survey Foot

Horizontal Datum _____

Zone _____ Epoch Date _____

Vertical Datum _____

Complies with Public Resources Code §§8801-8819

Complies with Public Resources Code §§8890-8902

PLS Act Ref: 8765(d) 8771 8773 Other:

Corner/Monument: Left as found Established Rebuilt Pre-Construction
 Found and tagged Reestablished Referenced Post-Construction

Narrative of corner identified and monument as found, set, reset, replaced, or removed:

See sheet #2 for description (s):

THIS MONUMENT WAS RECOVERED IN GOOD CONDITION FOLLOWING NEARBY CONSTRUCTION ACTIVITY. THE TIES SHOWN HEREON ARE PROVIDED SOLELY FOR THE PURPOSE OF PERPETUATING THE FOUND MONUMENTATION. NO CLAIM IS MADE REGARDING THE RELATIONSHIP OF THE POINTS OR LINES SHOWN HEREON.

SURVEYOR'S STATEMENT

This Corner Record was prepared by me or under my direction in conformance with the Professional Land Surveyors' Act on 1/6/2026

Signed [Signature] P.L.S. or R.C.E. No. LS 9384



COUNTY SURVEYOR'S STATEMENT

This Corner Record was received January 27, 2026

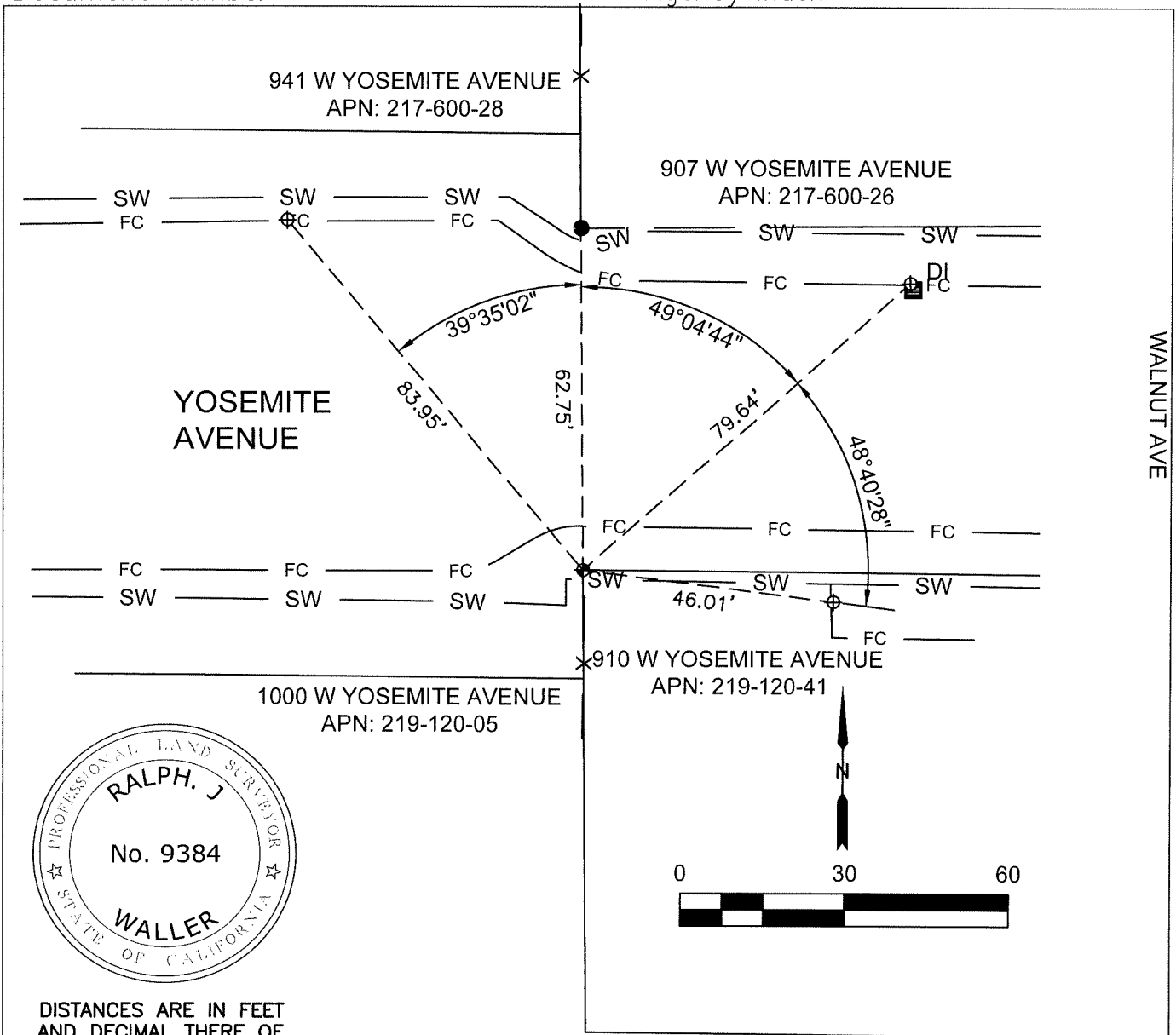
and examined and filed February 26, 2026

Signed James E. Hart P.L.S. or R.C.E. No. 8657

Title County Surveyor



County Surveyor's Comment



DISTANCES ARE IN FEET AND DECIMAL THERE OF.

LEGEND

These standard symbols will be found in the drawing.

FENCE LINE

STORM DRAIN INLET

FOUND 1/2" BRASS TAG STAMPED LS 4450 N.R.

NO RECORD

FOUND 1" ROD NO TAG N.R.

SET 1/2" BRASS TAG MARKED R.P. LS 9384

TIE LINE

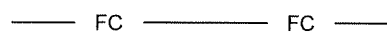
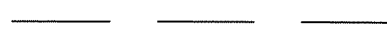
EDGE OF SIDEWALK

FACE OF CURB

ASSESSOR PARCEL NUMBER



N.R.



APN