

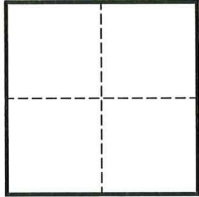
# CORNER RECORD

Agency Index CR-26-090  
Document Number \_\_\_\_\_

City of STOCKTON County of SAN JOAQUIN, California  
Brief Legal Description MONUMENT AT THE NW CORNER OF PACIFIC AVENUE AND WEST HARDING WAY

### CORNER TYPE

### COORDINATES (Optional)



- Government Corner
- Meander
- Rancho
- Control
- Property
- Other

Date of Survey JULY 29, 2025

N. \_\_\_\_\_ E. \_\_\_\_\_  
 Elevation \_\_\_\_\_  
 Units  Metric  U.S. Survey Foot  
 Horizontal Datum \_\_\_\_\_  
 Zone \_\_\_\_\_ Epoch Date \_\_\_\_\_  
 Vertical Datum \_\_\_\_\_  
 Complies with Public Resources Code §§8801-8819  
 Complies with Public Resources Code §§8890-8902

PLS Act Ref.:  8765(d)  8771  8773  Other:  
 Corner/Monument:  Left as found  Established  Rebuilt  Pre-Construction  
 Found and tagged  Reestablished  Referenced  Post-Construction

Narrative of corner identified and monument as found, set, reset, replaced, or removed:

See sheet #2 for description(s):

FOUND 2-1/2" BRASS DISK IN MONUMENT WELL, WITH PUNCH, STAMPED "CITY OF STOCKTON, R.C.E. 8189" PER BOOK 28 OF SURVEYS AT PAGE 58, SAN JOAQUIN COUNTY RECORDS. ALSO STAMPED "2S-2" PER BOOK 35 OF SURVEYS AT PAGE 5, SAN JOAQUIN COUNTY RECORDS

MONUMENT WAS REFERENCED PRIOR TO THE START OF CONSTRUCTION PROJECT IN THE VICINITY BY WEST VALLEY CONSTRUCTION COMPANY.

### SURVEYOR'S STATEMENT

This Corner Record was prepared by me or under my direction in conformance with the Professional Land Surveyors' Act on AUGUST 6, 2025

Signed [Signature] P.L.S. or R.C.E. No. 9592



### COUNTY SURVEYOR'S STATEMENT

This Corner Record was received February 12, 2026

and examined and filed February 24, 2026

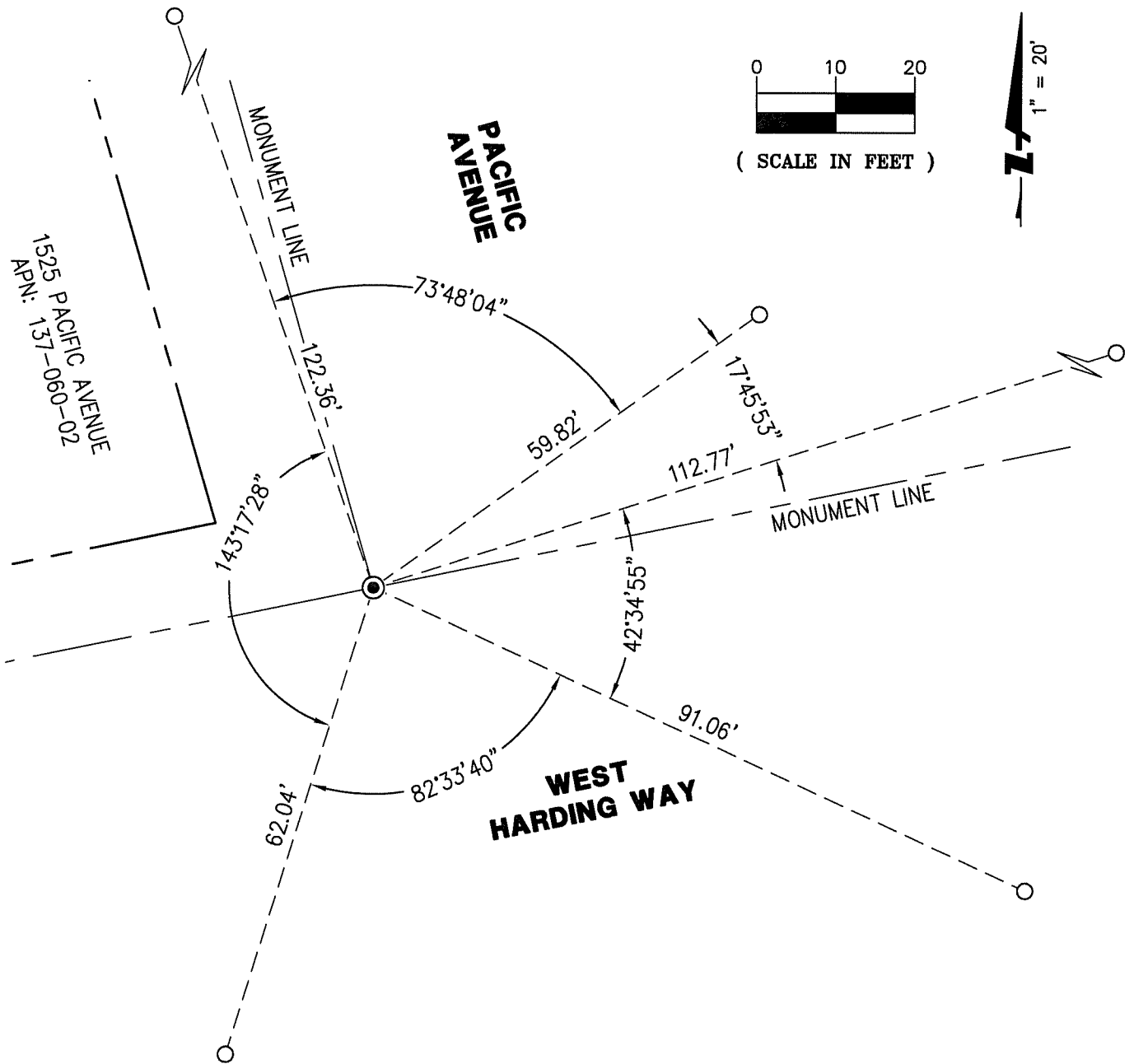
Signed James E. Hart P.L.S. or R.C.E. No. 8657

Title County Surveyor



### County Surveyor's Comment

[Empty dashed box for County Surveyor's Comment]



**LEGEND**

- ⊙ FOUND 2-1/2" BRASS DISK IN MONUMENT WELL, WITH PUNCH, STAMPED "CITY OF STOCKTON, R.C.E. 8189" PER BOOK 28 OF SURVEYS AT PAGE 58, SAN JOAQUIN COUNTY RECORDS. ALSO STAMPED "2S-2" PER BOOK 35 OF SURVEYS AT PAGE 5, SAN JOAQUIN COUNTY RECORDS
- SET MAG NAIL & WASHER IN TOP OF CONCRETE CURB
- APN ASSESSOR'S PARCEL NUMBER



1730 N. FIRST STREET  
 SUITE 600  
 SAN JOSE, CA 95112  
 (408) 467-9100  
 www.bkf.com

SUBJECT **PRE-CONSTRUCTION CORNER RECORD**  
**MONUMENT AT THE NE CORNER OF PACIFIC AVENUE**  
**AND WEST HARDING WAY**  
 JOB NO. 20191483 - MON PRESERVATION  
 BY RDV APPR. GA DATE 08/06/2025