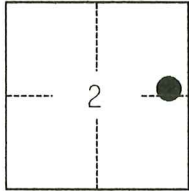


CORNER RECORD

Agency Index CR-26-089
 Document Number _____

City of STOCKTON County of SAN JOAQUIN, California
 Brief Legal Description FOUND MONUMENTS SHOWN ON M&P 36-67, SAN JOAQUIN COUNTY RECORDS.



T2N/R5E

CORNER TYPE

- Government Corner Control
 Meander Property
 Rancho Other

Date of Survey DECEMBER 4, 2025

COORDINATES (Optional)

- N. _____ E. _____
 Elevation _____
 Units Metric U.S. Survey Foot
 Horizontal Datum _____
 Zone _____ Epoch Date _____
 Vertical Datum _____
 Complies with Public Resources Code §§8801-8819
 Complies with Public Resources Code §§8890-8902

- PLS Act Ref.: 8765(d) 8771 8773 Other:
 Corner/
 Monument: Left as found Established Rebuilt Pre-Construction
 Found and tagged Reestablished Referenced Post-Construction

Narrative of corner identified and monument as found, set, reset, replaced, or removed:
 See sheet #2 for description(s):

THE FOUND MONUMENT SHOWN ON THIS CORNER RECORD WAS FOUND IN THE APPROXIMATE LOCATION OF THE CORNER ON M&P 36-67, SAN JOAQUIN COUNTY RECORDS. I DID NOT VERIFY THE IDENTITY AND VALIDITY OF THE MONUMENT FOUND AS ACTUALLY MARKING THE PROPERTY CORNER.

SURVEYOR'S STATEMENT

This Corner Record was prepared by me or under my direction in conformance with
 the Professional Land Surveyors' Act on DECEMBER 8, 2025
 Signed [Signature] P.L.S. or R.C.E. No. 8489

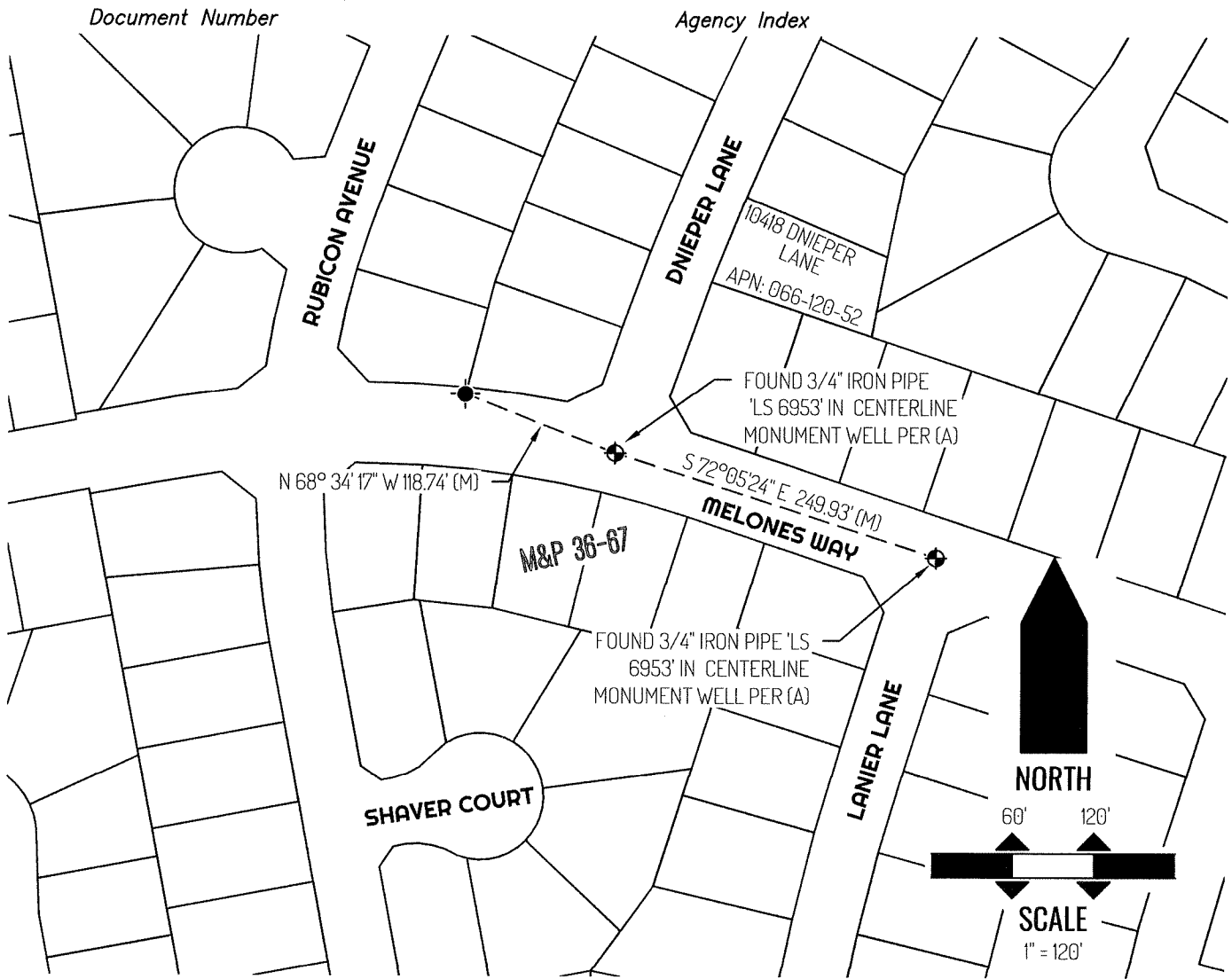


COUNTY SURVEYOR'S STATEMENT

This Corner Record was received February 12, 2026
 and examined and filed February 24, 2026
 Signed James E. Hart P.L.S. or R.C.E. No. 8657
 Title County Surveyor



County Surveyor's Comment



LEGEND

	FOUND CHISELED CROSS PER (A)
	CONTROL POINT AS NOTED
10418	REFERENCE STREET ADDRESS
M&P	MAPS & PLATS, SAN JOAQUIN COUNTY RECORDS
APN	TAX ASSESSOR PARCEL NUMBER
(M)	MEASURED
---	TIE LINE
—	LOT LINE

SURVEYOR NOTE

THIS CORNER RECORD IS BEING FILED TO FULFILL THE PRE-CONSTRUCTION MONUMENT PRESERVATION REQUIREMENTS OF SECTION 8771 OF THE CALIFORNIA BUSINESS AND PROFESSIONS CODE. IT IS NOT THE RESULT OF A FULLY RESOLVED BOUNDARY SURVEY FOR ANY PARCEL OF REAL PROPERTY.

REFERENCE

(A) BOOK 36 OF MAPS & PLATS, AT PAGE 67, SAN JOAQUIN COUNTY RECORDS.