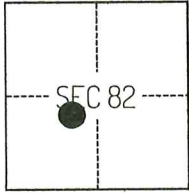


# CORNER RECORD

Agency Index CR-26-088  
 Document Number \_\_\_\_\_

City of \_\_\_\_\_ County of SAN JOAQUIN, California

Brief Legal Description FOUND MONUMENTS ALONG THE EASTERLY RIGHT OF WAY LINE OF STATE HIGHWAY 88, PER CR-25-262, SAN JOAQUIN COUNTY SURVEYOR'S RECORDS.



C.M. WEBER GRANT

### CORNER TYPE

- Government Corner     Control  
 Meander                     Property  
 Rancho                          Other

Date of Survey February 23, 2024

### COORDINATES (Optional)

N. \_\_\_\_\_ E. \_\_\_\_\_

Elevation \_\_\_\_\_

Units     Metric             U.S. Survey Foot

Horizontal Datum \_\_\_\_\_

Zone \_\_\_\_\_ Epoch Date \_\_\_\_\_

Vertical Datum \_\_\_\_\_

Complies with Public Resources Code §§8801-8819

Complies with Public Resources Code §§8890-8902

PLS Act Ref.:     8765(d)             8771             8773             Other:

Corner/Monument:     Left as found             Established             Rebuilt             Pre-Construction  
                                   Found and tagged             Reestablished             Referenced             Post-Construction

Narrative of corner identified and monument as found, set, reset, replaced, or removed:

See sheet #2 for description(s):

THE FOUND MONUMENT(S) SHOWN ON THIS CORNER RECORD WERE FOUND AT THE LOCATION OF THE CORNER(S) ON CORNER RECORD 25-262, SAN JOAQUIN SURVEYOR'S RECORDS. I DID NOT VERIFY THE IDENTITY AND VALIDITY OF THE MONUMENT(S) FOUND AS ACTUALLY MARKING THE PROPERTY CORNER.

### SURVEYOR'S STATEMENT

This Corner Record was prepared by me or under my direction in conformance with the Professional Land Surveyors' Act on September 23, 2025.  
 Signed *Scott L. Blake* P.L.S. or R.C.E. No. 8489



### COUNTY SURVEYOR'S STATEMENT

This Corner Record was received February 12, 2026  
 and examined and filed February 24, 2026.  
 Signed *James E. Hart* P.L.S. or R.C.E. No. 8657  
 Title County Surveyor



County Surveyor's Comment

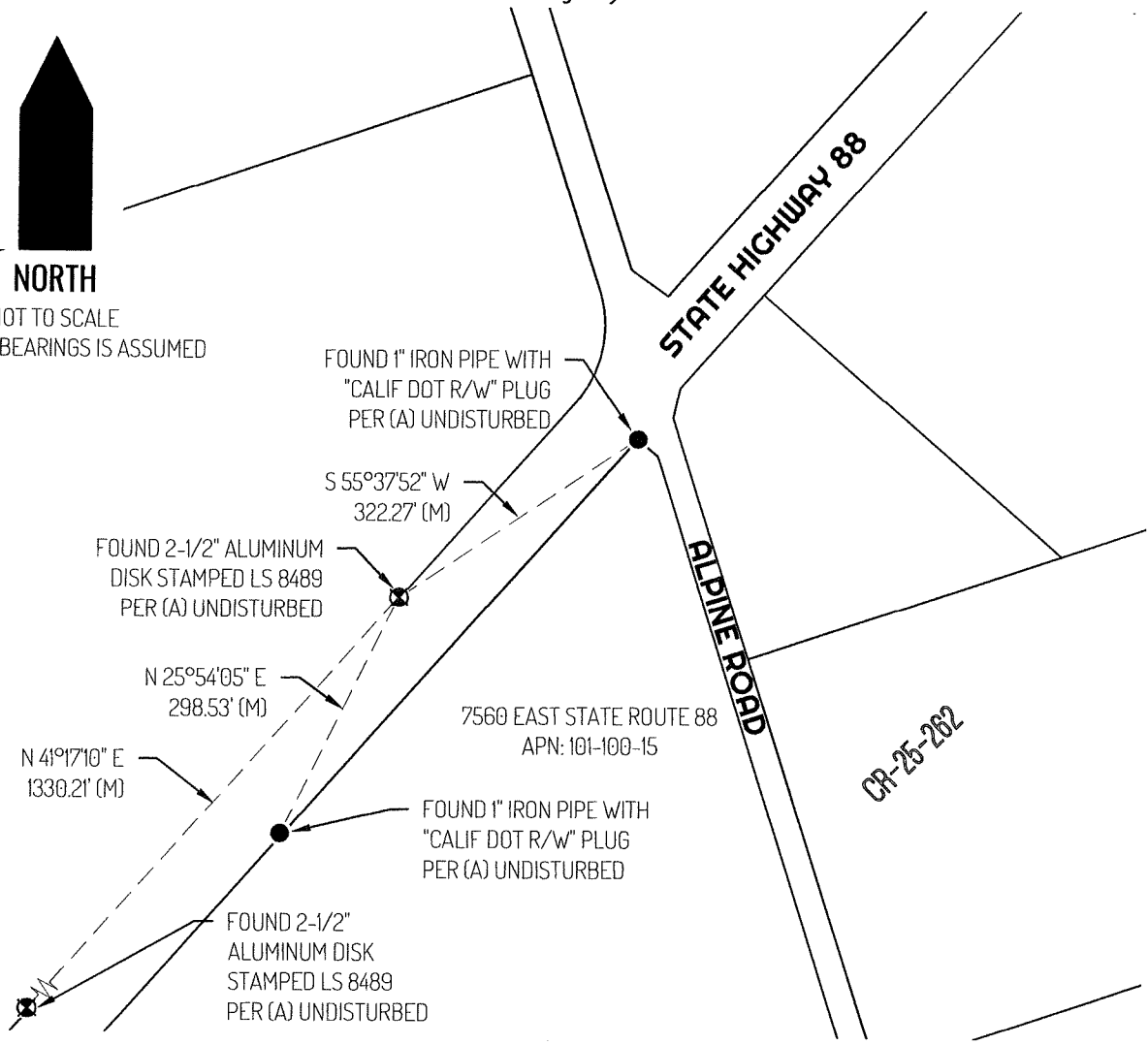
Document Number

Agency Index



**NORTH**

NOT TO SCALE  
BASIS-OF-BEARINGS IS ASSUMED



**LEGEND**

●	FOUND MONUMENT AS NOTED
7560	REFERENCE STREET ADDRESS
CR	CORNER RECORD, SAN JOAQUIN COUNTY SURVEYOR'S RECORDS
S.J.C.R.	SAN JOAQUIN COUNTY RECORDS
APN	TAX ASSESSOR PARCEL NUMBER
(M)	MEASURED
---	TIE LINE
---	LOT LINE

**REFERENCE**

(A) CORNER RECORD 25-262, SAN JOAQUIN COUNTY SURVEYOR'S RECORDS