

CORNER RECORD

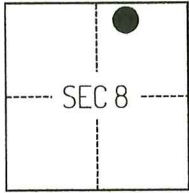
Agency Index CR-26-086
 Document Number _____

City of STOCKTON County of SAN JOAQUIN, California

Brief Legal Description FOUND MONUMENTS ON BOWIE WAY BETWEEN CHAPARRAL WAY AND SANTA FE DRIVE.

CORNER TYPE

COORDINATES (Optional)



T2N/R6E

- Government Corner Control
 Meander Property
 Rancho Other

Date of Survey September 10, 2024

N. _____ E. _____

Elevation _____

Units Metric U.S. Survey Foot

Horizontal Datum _____

Zone _____ Epoch Date _____

Vertical Datum _____

Complies with Public Resources Code §§8801-8819

Complies with Public Resources Code §§8890-8902

PLS Act Ref.: 8765(d) 8771 8773 Other:

Corner/Monument: Left as found Established Rebuilt Pre-Construction

Found and tagged Reestablished Referenced Post-Construction

Narrative of corner identified and monument as found, set, reset, replaced, or removed:

See sheet #2 for description(s):

THE FOUND MONUMENT(S) SHOWN ON THIS CORNER RECORD WERE FOUND AT THE LOCATION OF THE CORNER(S) ON CORNER RECORD 25-259, SAN JOAQUIN COUNTY SURVEYOR'S RECORDS. I DID NOT VERIFY THE IDENTITY AND VALIDITY OF THE MONUMENT(S) FOUND AS ACTUALLY MARKING THE PROPERTY CORNER.

SURVEYOR'S STATEMENT

This Corner Record was prepared by me or under my direction in conformance with the Professional Land Surveyors' Act on September 2, 2025.
 Signed [Signature] P.L.S. or R.C.E. No. 8489

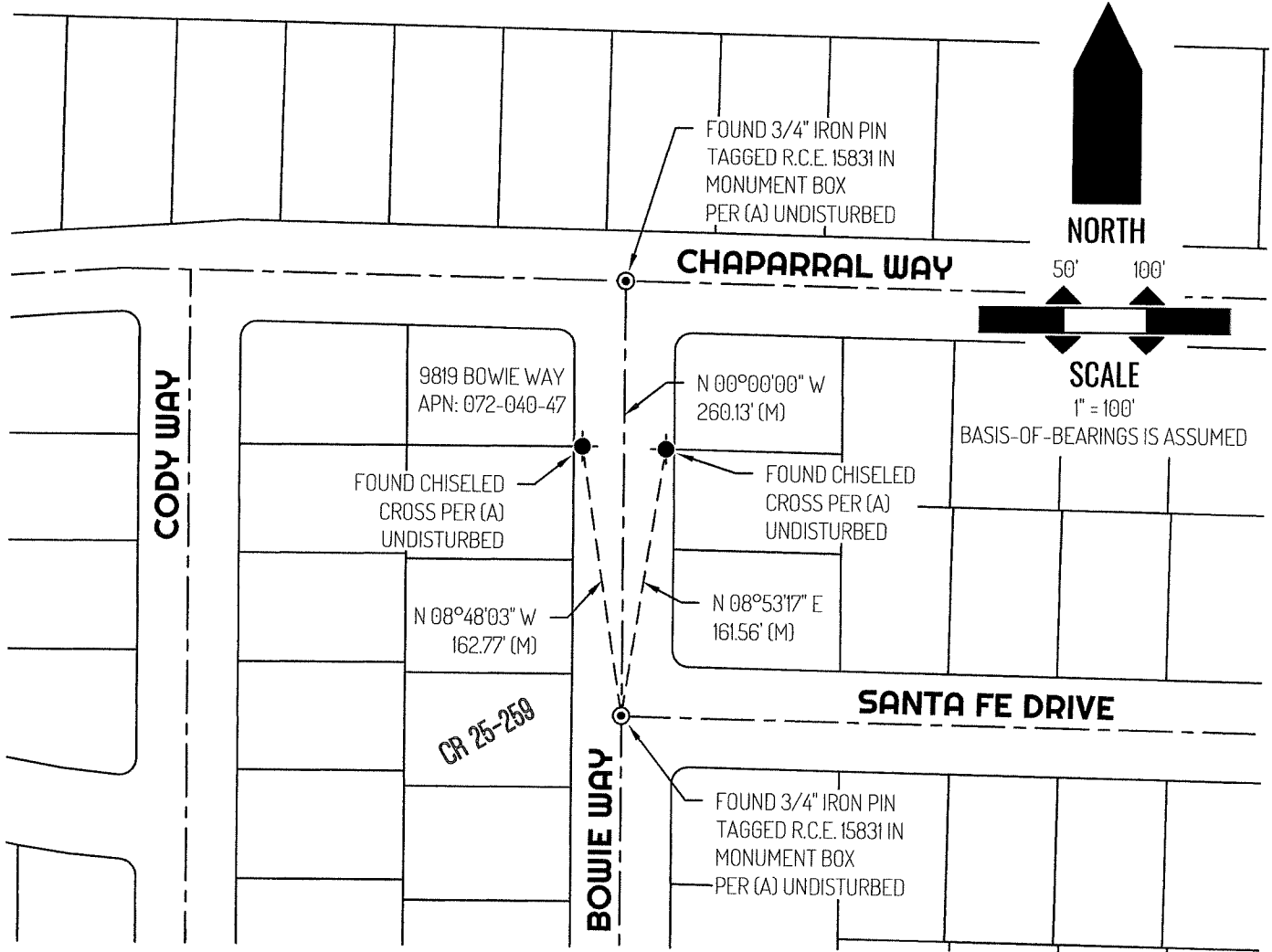


COUNTY SURVEYOR'S STATEMENT

This Corner Record was received February 12, 2026
 and examined and filed February 24, 2026.
 Signed [Signature] P.L.S. or R.C.E. No. 8657
 Title County Surveyor



County Surveyor's Comment



LEGEND

●	FOUND CHISELED CROSS AS NOTED
⊙	FOUND CENTERLINE MONUMENT AS NOTED
9819	REFERENCE STREET ADDRESS
CR	CORNER RECORD, SAN JOAQUIN COUNTY SURVEYOR'S RECORDS
APN	TAX ASSESSOR PARCEL NUMBER
(M)	MEASURED
---	TIE LINE
---	LOT LINE
---	RIGHT-OF-WAY CENTERLINE

REFERENCE

(A) CORNER RECORD 25-259, SAN JOAQUIN COUNTY SURVEYOR'S RECORDS