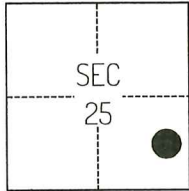


# CORNER RECORD

Agency Index CR-26-084  
 Document Number \_\_\_\_\_

City of \_\_\_\_\_ County of SAN JOAQUIN, California

Brief Legal Description FOUND MONUMENTS ALONG THE NORTH RIGHT-OF-WAY LINE OF ELLIOTT ROAD, CORNER RECORD 25-175, SAN JOAQUIN COUNTY SURVEYOR'S RECORDS.



T4N/R7E

### CORNER TYPE

- Government Corner     Control  
 Meander                     Property  
 Rancho                         Other

Date of Survey April 15, 2025

### COORDINATES (Optional)

N. \_\_\_\_\_ E. \_\_\_\_\_

Elevation \_\_\_\_\_

Units     Metric             U.S. Survey Foot

Horizontal Datum \_\_\_\_\_

Zone \_\_\_\_\_ Epoch Date \_\_\_\_\_

Vertical Datum \_\_\_\_\_

Complies with Public Resources Code §§8801-8819

Complies with Public Resources Code §§8890-8902

PLS Act Ref.:     8765(d)                     8771                     8773                     Other:

Corner/Monument:     Left as found                     Established                     Rebuilt                     Pre-Construction

Found and tagged                     Reestablished                     Referenced                     Post-Construction

Narrative of corner identified and monument as found, set, reset, replaced, or removed:

See sheet #2 for description(s):

THE FOUND MONUMENT(S) SHOWN ON THIS CORNER RECORD WERE FOUND AT THE RECORD LOCATION OF THE CORNER(S) ON CORNER RECORD 25-175, SAN JOAQUIN COUNTY SURVEYOR'S RECORDS. I DID NOT VERIFY THE IDENTITY OR VALIDITY OF THE MONUMENT(S) FOUND AS ACTUALLY MARKING THE PROPERTY CORNER.

### SURVEYOR'S STATEMENT

This Corner Record was prepared by me or under my direction in conformance with the Professional Land Surveyors' Act on July 23, 2025.  
 Signed [Signature] P.L.S. or R.C.E. No. 8489

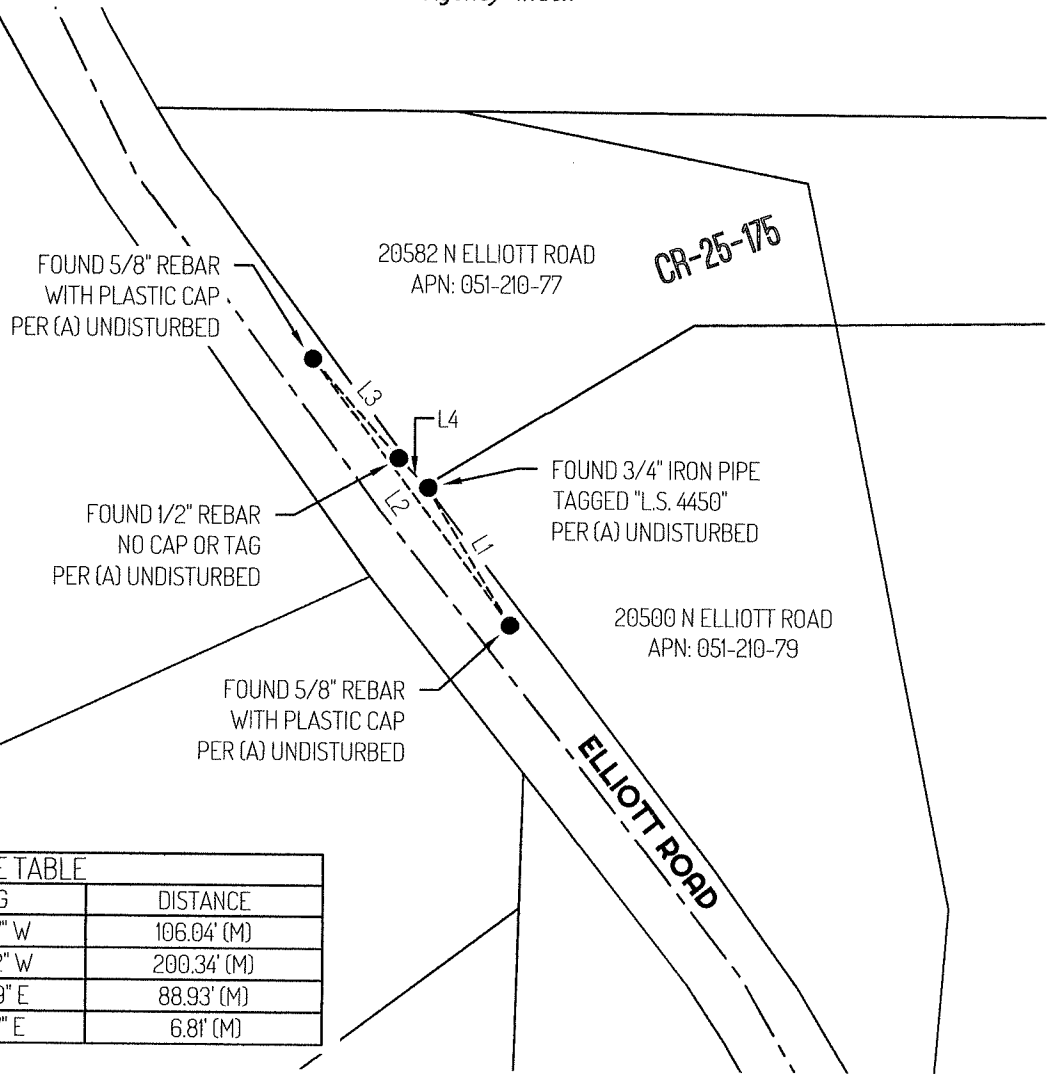
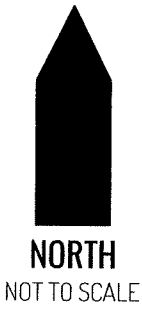


### COUNTY SURVEYOR'S STATEMENT

This Corner Record was received February 12, 2026  
 and examined and filed February 23, 2026.  
 Signed James E. Hart P.L.S. or R.C.E. No. 8657  
 Title County Surveyor



County Surveyor's Comment



LINE TABLE		
LINE	BEARING	DISTANCE
L1	N 32°44'57" W	106.04' (M)
L2	N 36°52'32" W	200.34' (M)
L3	S 39°25'29" E	88.93' (M)
L4	S 69°31'47" E	6.81' (M)

**LEGEND**

- FOUND MONUMENT AS NOTED
- 20500 REFERENCE STREET ADDRESS
- APN TAX ASSESSOR PARCEL NUMBER
- CR CORNER RECORD, SAN JOAQUIN COUNTY SURVEYOR'S RECORDS
- (M) MEASURED
- LOT LINE
- RIGHT-OF-WAY CENTERLINE
- - - - - TIE LINE

**REFERENCE**

(A) CORNER RECORD 25-175, SAN JOAQUIN COUNTY SURVEYOR'S RECORDS