

# CORNER RECORD

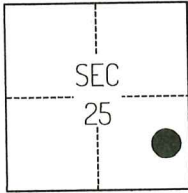
Agency Index CR-26-083  
Document Number \_\_\_\_\_

City of \_\_\_\_\_ County of SAN JOAQUIN, California

Brief Legal Description FOUND MONUMENTS ALONG SOUTHERN BOUNDARY OF APN 051-210-27 PER CORNER RECORD 25-174, SAN JOAQUIN COUNTY SURVEYOR'S RECORDS.

### CORNER TYPE

### COORDINATES (Optional)



T4N/R7E

- Government Corner
- Meander
- Rancho
- Control
- Property
- Other

Date of Survey April 15, 2025

N. \_\_\_\_\_ E. \_\_\_\_\_

Elevation \_\_\_\_\_

Units  Metric  U.S. Survey Foot

Horizontal Datum \_\_\_\_\_

Zone \_\_\_\_\_ Epoch Date \_\_\_\_\_

Vertical Datum \_\_\_\_\_

Complies with Public Resources Code §§8801-8819

Complies with Public Resources Code §§8890-8902

PLS Act Ref.:  8765(d)  8771  8773  Other:

Corner/Monument:  Left as found  Established  Rebuilt  Pre-Construction  
 Found and tagged  Reestablished  Referenced  Post-Construction

Narrative of corner identified and monument as found, set, reset, replaced, or removed:

See sheet #2 for description(s):

THE FOUND MONUMENT(S) SHOWN ON THIS CORNER RECORD WERE FOUND AT THE RECORD LOCATION OF THE CORNER(S) ON CORNER RECORD 25-174, SAN JOAQUIN COUNTY SURVEYOR'S RECORDS. I DID NOT VERIFY THE IDENTITY OR VALIDITY OF THE MONUMENT(S) FOUND AS ACTUALLY MARKING THE PROPERTY CORNER.

### SURVEYOR'S STATEMENT

This Corner Record was prepared by me or under my direction in conformance with  
 the Professional Land Surveyors' Act on July 23, 2025  
 Signed *Scott L. Blake* P.L.S. or R.C.E. No. 8489



### COUNTY SURVEYOR'S STATEMENT

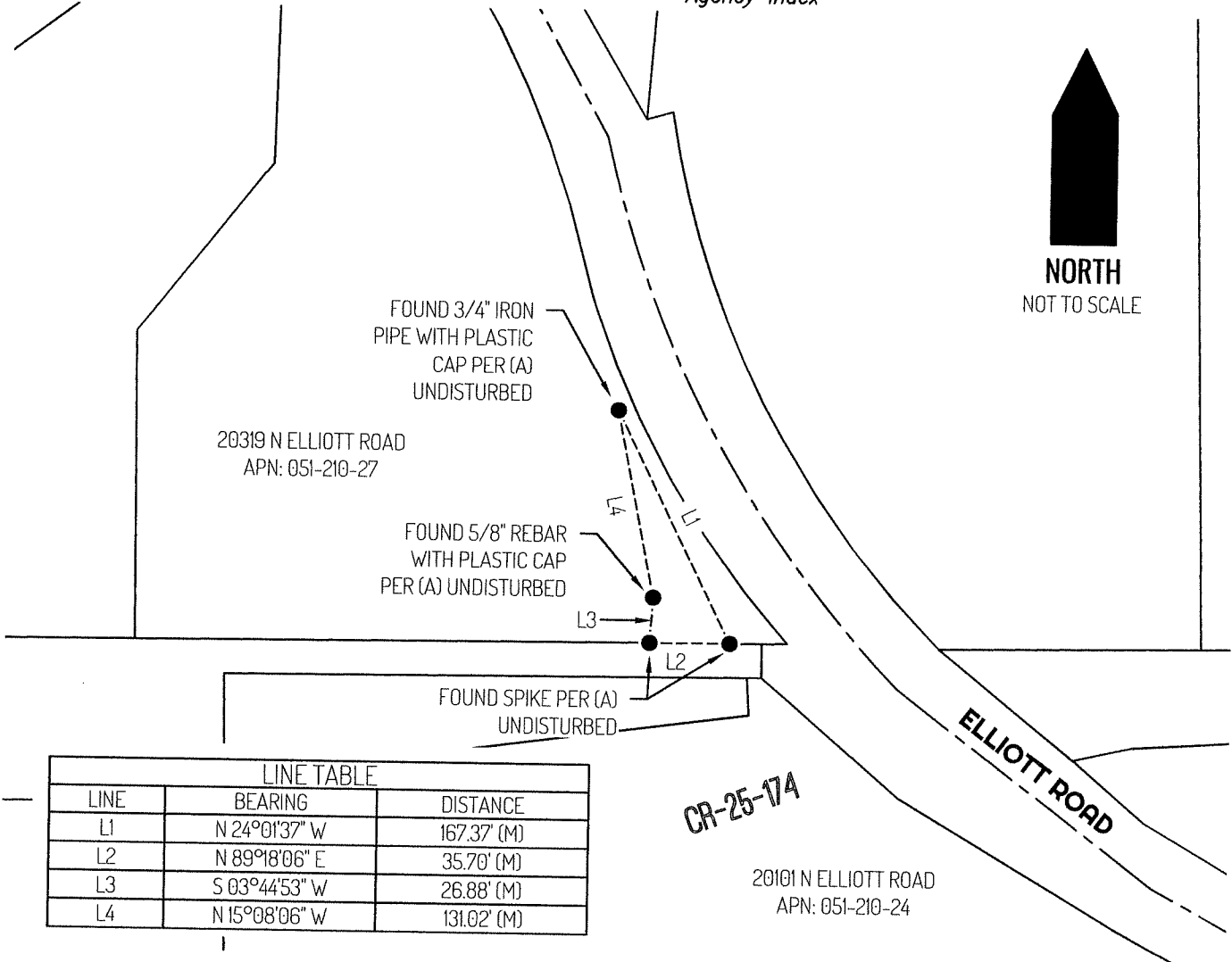
This Corner Record was received February 12, 2026  
 and examined and filed February 23, 2026  
 Signed *James E. Hart* P.L.S. or R.C.E. No. 8657  
 Title County Surveyor



County Surveyor's Comment

Document Number

Agency Index



LINE TABLE		
LINE	BEARING	DISTANCE
L1	N 24°01'37" W	167.37' (M)
L2	N 89°18'06" E	35.70' (M)
L3	S 03°44'53" W	26.88' (M)
L4	N 15°08'06" W	131.02' (M)

**LEGEND**

- FOUND MONUMENT AS NOTED
- 20319 REFERENCE STREET ADDRESS
- CR CORNER RECORD, SAN JOAQUIN COUNTY SURVEYOR'S RECORDS
- APN TAX ASSESSOR PARCEL NUMBER
- (M) MEASURED
- LOT LINE
- - - - - RIGHT-OF-WAY CENTERLINE
- - - - - TIE LINE

**REFERENCE**

(A) CORNER RECORD 25-174, SAN JOAQUIN COUNTY SURVEYOR'S RECORDS