

# CORNER RECORD

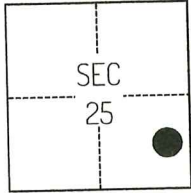
Agency Index CR-26-081  
 Document Number \_\_\_\_\_

City of \_\_\_\_\_ County of SAN JOAQUIN, California

Brief Legal Description FOUND MONUMENT ALONG THE SOUTHERLY RIGHT-OF-WAY LINE OF ELLIOTT ROAD PER CORNER RECORD 25-172, SAN JOAQUIN COUNTY SURVEYOR'S RECORDS.

**CORNER TYPE**

**COORDINATES (Optional)**



T4N/R7E

- Government Corner
- Meander
- Rancho
- Control
- Property
- Other

Date of Survey April 15, 2025

N. \_\_\_\_\_ E. \_\_\_\_\_

Elevation \_\_\_\_\_

Units  Metric  U.S. Survey Foot

Horizontal Datum \_\_\_\_\_

Zone \_\_\_\_\_ Epoch Date \_\_\_\_\_

Vertical Datum \_\_\_\_\_

Complies with Public Resources Code §§8801-8819

Complies with Public Resources Code §§8890-8902

PLS Act Ref.:  8765(d)  8771  8773  Other:

Corner/Monument:  Left as found  Established  Rebuilt  Pre-Construction

Found and tagged  Reestablished  Referenced  Post-Construction

Narrative of corner identified and monument as found, set, reset, replaced, or removed:

See sheet #2 for description(s):

THE FOUND MONUMENT(S) SHOWN ON THIS CORNER RECORD WERE FOUND AT THE RECORD LOCATION OF THE CORNER(S) ON CORNER RECORD 25-172, SAN JOAQUIN COUNTY SURVEYOR'S RECORDS. I DID NOT VERIFY THE IDENTITY OR VALIDITY OF THE MONUMENT FOUND AS ACTUALLY MARKING THE PROPERTY CORNER.

**SURVEYOR'S STATEMENT**

This Corner Record was prepared by me or under my direction in conformance with the Professional Land Surveyors' Act on July 23, 2025.  
 Signed [Signature] P.L.S. or R.C.E. No. 8489



**COUNTY SURVEYOR'S STATEMENT**

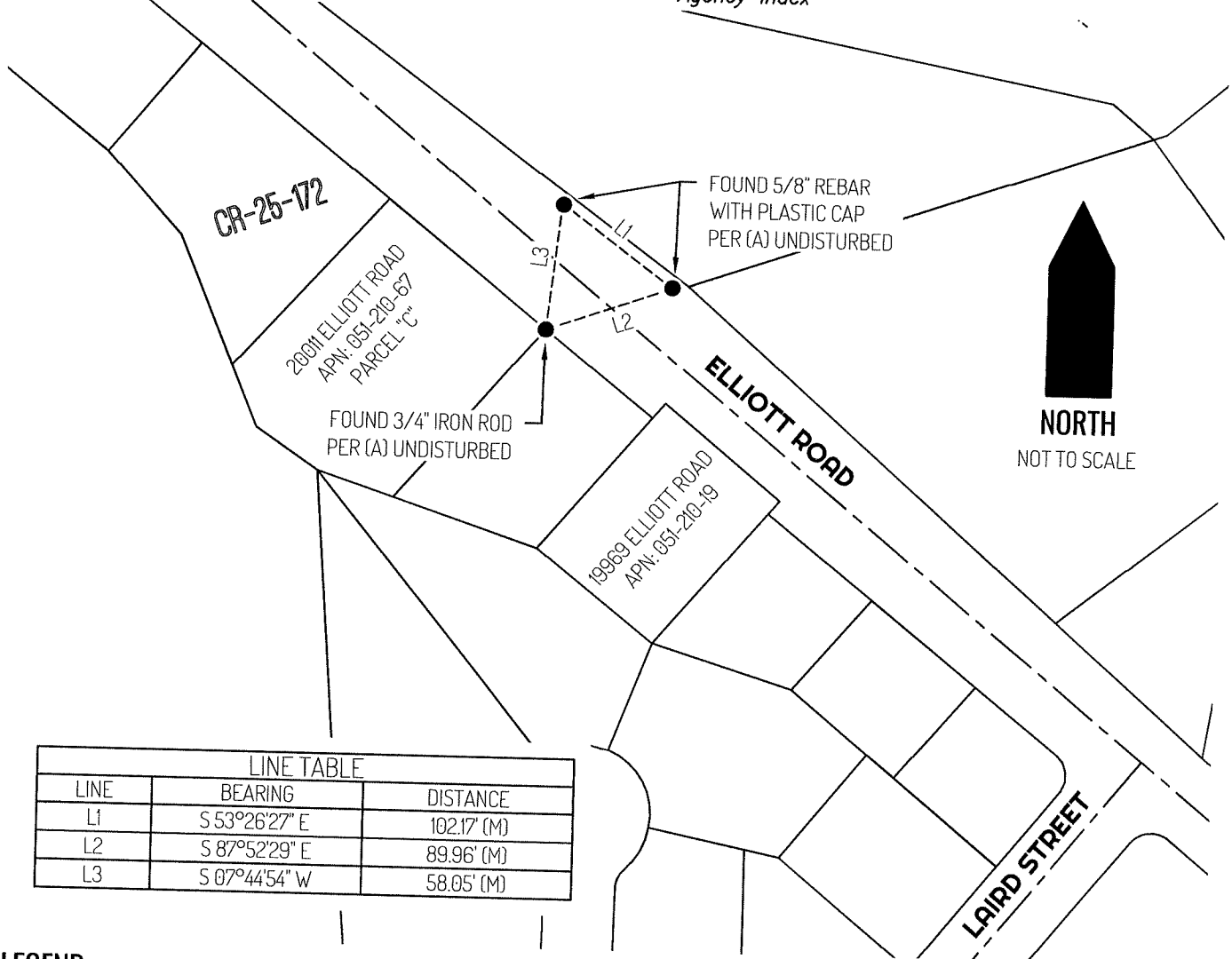
This Corner Record was received February 12, 2026 and examined and filed February 23, 2026.  
 Signed James E. Hart P.L.S. or R.C.E. No. 8657  
 Title County Surveyor



County Surveyor's Comment

Document Number

Agency Index



CR-25-172

200M ELLIOTT ROAD  
APN: 051-210-67  
PARCEL "C"

FOUND 3/4" IRON ROD  
PER (A) UNDISTURBED

FOUND 5/8" REBAR  
WITH PLASTIC CAP  
PER (A) UNDISTURBED

19969 ELLIOTT ROAD  
APN: 051-210-19

ELLIOTT ROAD



LINE TABLE		
LINE	BEARING	DISTANCE
L1	S 53°26'27" E	102.17' (M)
L2	S 87°52'29" E	89.96' (M)
L3	S 07°44'54" W	58.05' (M)

LAIRD STREET

### LEGEND

- 19969 FOUND MONUMENT AS NOTED
- CR REFERENCE STREET ADDRESS
- APN CORNER RECORD, SAN JOAQUIN COUNTY SURVEYOR'S RECORDS
- (M) TAX ASSESSOR PARCEL NUMBER
- MEASURED
- LOT LINE
- - - - - RIGHT-OF-WAY CENTERLINE
- - - - - TIE LINE

### REFERENCE

(A) CORNER RECORD 25-172, SAN JOAQUIN COUNTY SURVEYOR'S RECORDS