

# CORNER RECORD

Agency Index CR-26-079

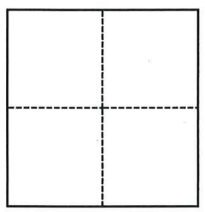
Document Number \_\_\_\_\_

City of \_\_\_\_\_ County of San Joaquin, California

Brief Legal Description LOT 9, M.&P. 3-55, S.J.C.R.

### CORNER TYPE

### COORDINATES (Optional)



- Government Corner
- Meander
- Rancho
- Control
- Property
- Other

Date of Survey January 16, 2026

N. \_\_\_\_\_ E. \_\_\_\_\_

Elevation \_\_\_\_\_

Units  Metric  U.S. Survey Foot

Horizontal Datum \_\_\_\_\_

Zone \_\_\_\_\_ Epoch Date \_\_\_\_\_

Vertical Datum \_\_\_\_\_

- Complies with Public Resources Code §§8801-8819
- Complies with Public Resources Code §§8890-8902

SECTION 34, T.4N., R7E., M.D.B.&M.

PLS Act Ref.:  8765(d)  8771  8773  Other:

Corner/Monument:  Left as found  Established  Rebuilt  Pre-Construction

Found and tagged  Reestablished  Referenced  Post-Construction

Narrative of corner identified and monument as found, set, reset, replaced, or removed:

See sheet #2 for description(s):

### SURVEYOR'S STATEMENT

This Corner Record was prepared by me or under my direction in conformance with  
 the Professional Land Surveyors' Act on 2/10/26  
 Signed [Signature] P.L.S. or R.C.E. No. 25835

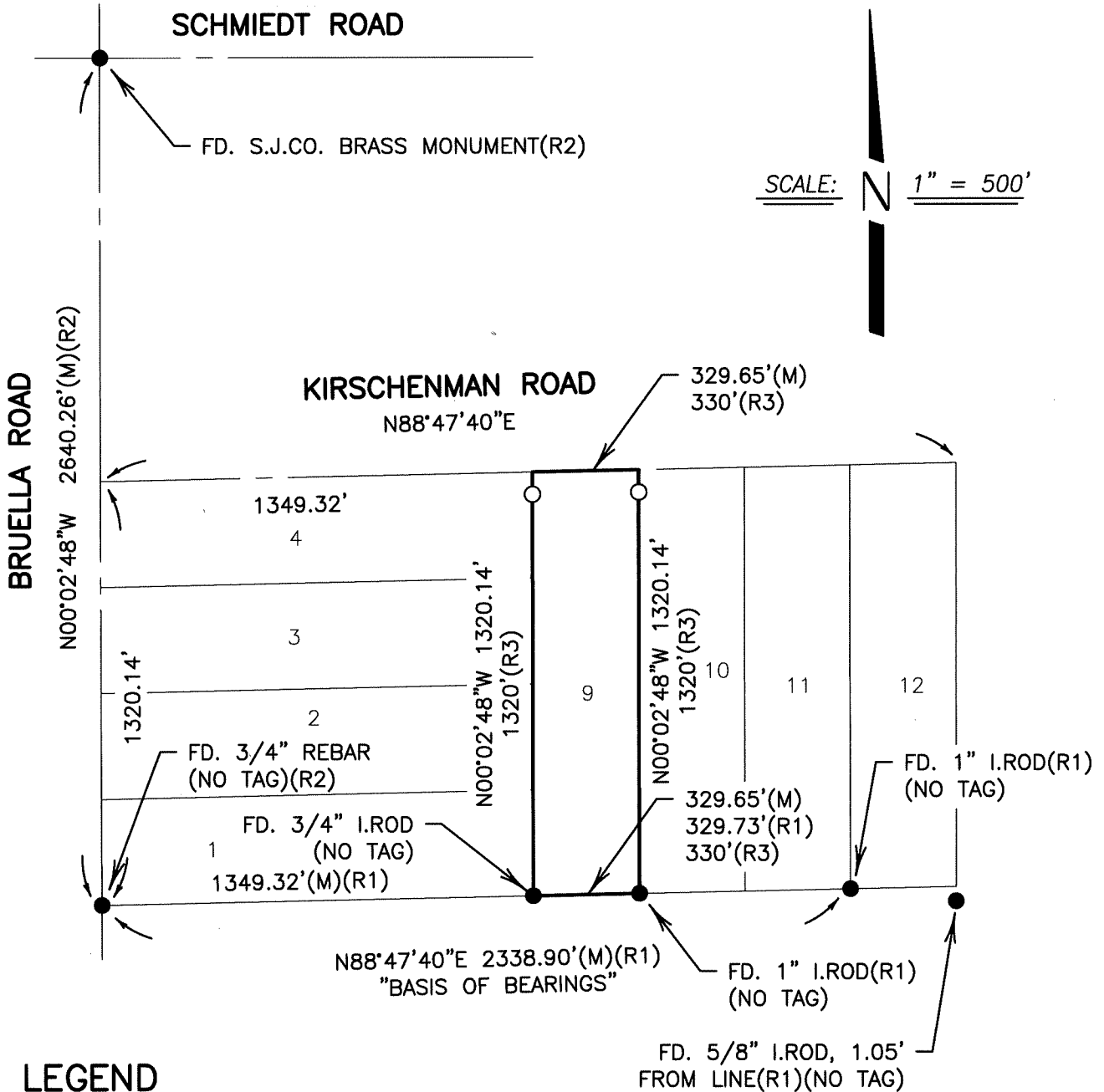


### COUNTY SURVEYOR'S STATEMENT

This Corner Record was received February 12, 2026  
 and examined and filed February 23, 2026  
 Signed James E. Hart P.L.S. or R.C.E. No. 8657  
 Title County Surveyor



County Surveyor's Comment



**LEGEND**

- FD. FOUND
- S.J.C.R. SAN JOAQUIN COUNTY RECORDS
- S.J.CO. SAN JOAQUIN COUNTY
- (M) MEASURED
- R.S. RECORD OF SURVEY
- I.ROD IRON ROD
- FD. MONUMENT AS NOTED
- SET 3/4"X30" IRON ROD, CAPPED RCE 25835 AS WITNESS CORNER, S00°02'48"E 15.00'
- M.&P. MAPS AND PLATS

**REFERENCES:**

- (R1) R.S. 32-72, S.J.C.R.
- (R2) R.S. 37-75, S.J.C.R.
- (R3) M.&P. 3-55, S.J.C.R.