

CORNER RECORD

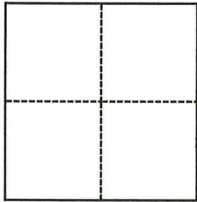
Agency Index CR-26-077
Document Number _____

City of _____ County of SAN JOAQUIN, California

Brief Legal Description 1-ACRE PARCEL PER R.S. 29-65, PORTION OF SEC. 18, T2N, R8E, MDB&M

CORNER TYPE

COORDINATES (Optional)



- Government Corner
- Meander
- Rancho
- Control
- Property
- Other

Date of Survey January 21, 2026

N. _____ E. _____

Elevation _____

Units Metric U.S. Survey Foot

Horizontal Datum _____

Zone _____ Epoch Date _____

Vertical Datum _____

Complies with Public Resources Code §§8801-8819

Complies with Public Resources Code §§8890-8902

PLS Act Ref.: 8765(d) 8771 8773 Other: _____

Corner/Monument: Left as found Established Rebuilt Pre-Construction

Found and tagged Reestablished Referenced Post-Construction

Narrative of corner identified and monument as found, set, reset, replaced, or removed:

See sheet #2 for description(s):

THIS DOCUMENT IS FOR THE PURPOSE OF RESETTING ANY MISSING OR OBLITERATED CORNERS FOR THE 1.00-ACRE PARCEL, AS SHOWN IN BOOK 29 OF SURVEYS, PAGE 65, SAN JOAQUIN COUNTY RECORDS.

SURVEYOR'S STATEMENT

This Corner Record was prepared by me or under my direction in conformance with the Professional Land Surveyors' Act on February 9, 2026

Signed [Signature] P.L.S. or R.C.E. No. L.S. 7600



COUNTY SURVEYOR'S STATEMENT

This Corner Record was received February 9, 2026

and examined and filed February 23, 2026

Signed James E. Hart P.L.S. or R.C.E. No. 8657

Title County Surveyor

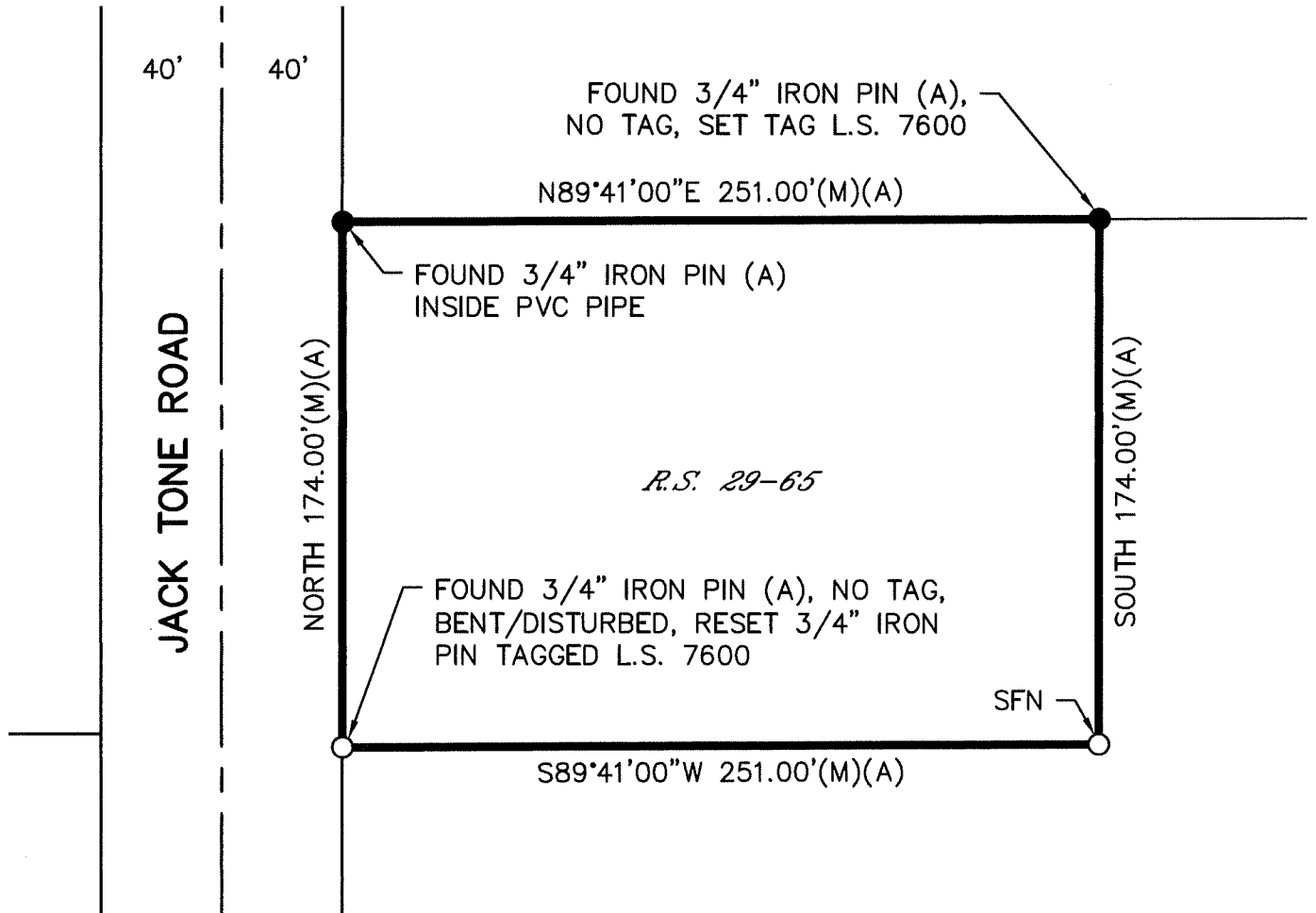
County Surveyor's Comment





WONG ENGINEERS, INC.

4578 FEATHER RIVER DRIVE, SUITE A
STOCKTON, CA 95219 (209) 476-0011
FEBRUARY 9, 2026 PAGE 2 OF 2



REFERENCE:

(A) R.S. 29-65, SJCR

LEGEND:

- (M) MEASURED
- R.S. RECORD OF SURVEY, BOOK-PAGE
- SFN SEARCHED, FOUND NOTHING
- SJCR SAN JOAQUIN COUNTY RECORDS

- FOUND MONUMENT AS NOTED
- SET 3/4" X 30" IRON PIN TAGGED L.S. 7600

