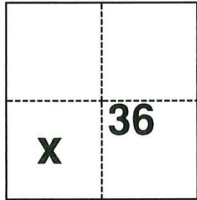


CORNER RECORD

Agency Index CR-25-341
Document Number _____

City of UNINCORPORATED County of SAN JOAQUIN, California
Brief Legal Description CENTERLINE OF ADA AVENUE, BOOK 5 M&P 44 & CR-25-312

CORNER TYPE



- ☐ Government Corner ☐ Control
☐ Meander ☐ Property
☐ Rancho ☒ Other

Date of Survey September 15, 2025

COORDINATES (Optional)

N. _____ E. _____
Elevation _____
Units ☐ Metric ☒ U.S. Survey Foot
Horizontal Datum _____
Zone _____ Epoch Date _____
Vertical Datum _____
☐ Complies with Public Resources Code §§8801-8819
☐ Complies with Public Resources Code §§8890-8902

T2N., R 7E.

PLS Act Ref.: ☐ 8765(d) ☒ 8771 ☐ 8773 ☐ Other:
Corner/Monument: ☒ Left as found ☐ Established ☒ Rebuilt ☒ Pre-Construction
☐ Found and tagged ☐ Reestablished ☐ Referenced ☐ Post-Construction

Narrative of corner identified and monument as found, set, reset, replaced, or removed:

☒ See sheet #2 for description(s):

FOUND MAG NAIL & TAG STAMPED "SJCO" IN THE CENTERLINE OF ADA AVENUE PER CR-25-312.

SURVEYOR'S STATEMENT

This Corner Record was prepared by me or under my direction in conformance with

the Professional Land Surveyors' Act on July 8, 2025

Signed Ronald E. Monsour (P.L.S.) or R.C.E. No. 8474



COUNTY SURVEYOR'S STATEMENT

This Corner Record was received October 23, 2025

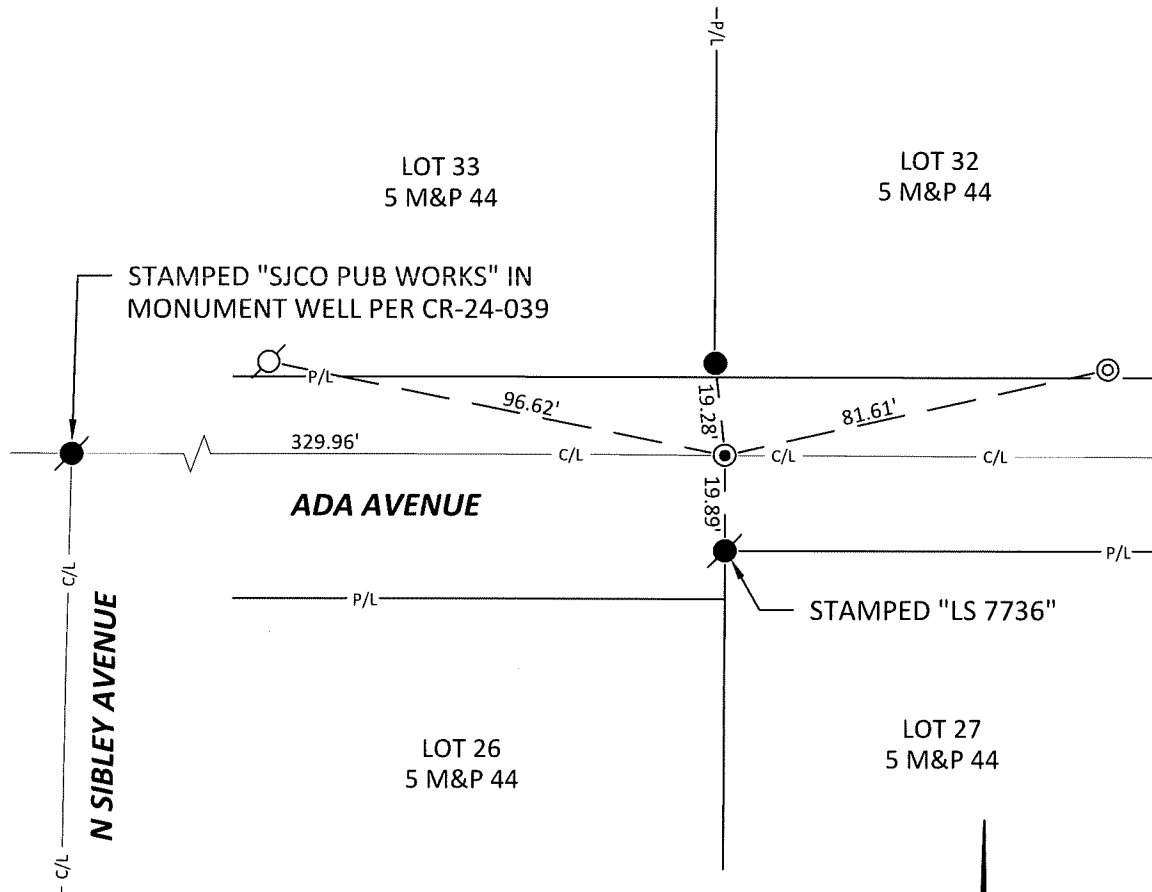
and examined and filed October 28, 2025

Signed James E. Hart P.L.S. or R.C.E. No. 8657

Title County Surveyor

County Surveyor's Comment



LEGEND:

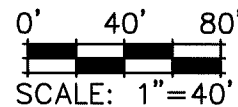
- FOUND REBAR WITH PLASTIC CAP AS NOTED
- FOUND GINNIE & TACK
- ⊙ FOUND MAG NAIL & TAG STAMPED "SJCO"
- ⊙ SET 3/4" X 30" REBAR & PLASTIC CAP
- ⊙ SET MAG NAIL IN CONCRETE DRIVEWAY AT 11885 ADA AVENUE.

M&P MAPS & PLATS
 CR CORNER RECORD
 S.J.C. SAN JOAQUIN COUNTY
 S.J.C.S. SAN JOAQUIN COUNTY SURVEYOR

REFERENCES:

5 M&P 44, S.J.C. RECORDS

CR-25-312 S.J.C.S. RECORDS



NOTE:
 THE PURPOSE OF THIS CORNER RECORD IS TO PERPETUATE THE POSITION(S) OF EXISTING MONUMENT(S). NO REPRESENTATION IS MADE TO ANY RELATIVE POSITION(S) OF SAID MONUMENT(S). ALL RIGHT OF WAY, PROPERTY LINES, CENTERLINES AND OTHERS ARE FOR GRAPHICAL REPRESENTATION ONLY.



905 Sutter St., Suite 200, Folsom, CA 95630
 (916) 366-3040 Fax (916) 366-3303
 R. E. Y. ENGINEERS, Inc.
 Civil Engineers / Land Surveyors

CORNER RECORD EXHIBIT MAP

SCALE: 1"=40'
 JOB NO: 35655258
 DATE: 9/17/2025
 DWG: ADA AVENUE