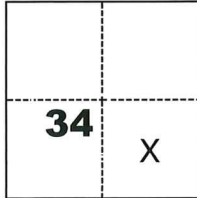


CORNER RECORD

Agency Index

CR-25-339

Document Number

City of UNINCORPORATED County of SAN JOAQUIN, CaliforniaBrief Legal Description PARCELS 1 & 2 OF 20 P.M. 117, S.J.C.R.**CORNER TYPE****COORDINATES (Optional)**

- | | |
|--|-----------------------------------|
| <input type="checkbox"/> Government Corner | <input type="checkbox"/> Control |
| <input type="checkbox"/> Meander | <input type="checkbox"/> Property |
| <input type="checkbox"/> Rancho | <input type="checkbox"/> Other |

N. _____ E. _____

Elevation _____

Units ☐ Metric ☐ U.S. Survey Foot

Horizontal Datum _____

Zone _____ Epoch Date _____

Vertical Datum _____

☐ Complies with Public Resources Code §§8801-8819☐ Complies with Public Resources Code §§8890-8902Date of Survey September 9, 2025C.M. Weber Grant

PLS Act Ref.:

☐ 8765(d)☐ 8771☐ 8773☐ Other:Corner/
Monument:☒ Left as found☐ Established☐ Rebuilt☒ Pre-Construction☐ Found and tagged☐ Reestablished☒ Referenced☐ Post-Construction

Narrative of corner identified and monument as found, set, reset, replaced, or removed:

☒ See sheet #2 for description(s):

FOUND 1" IRON PIPE WITH NO CAP ON THE NORTHEAST CORNER OF PARCEL 1, 20 P.M. 117, SAN JOAQUIN COUNTY RECORDS. See Map on page 2 of this corner record.

SURVEYOR'S STATEMENT

This Corner Record was prepared by me or under my direction in conformance with

the Professional Land Surveyors' Act on September 16, 2025

Signed

(P.L.S.) or R.C.E. No.

8474**COUNTY SURVEYOR'S STATEMENT**

This Corner Record was received

October 21, 2025

and examined and filed

October 28, 2025

Signed

P.L.S. or R.C.E. No.

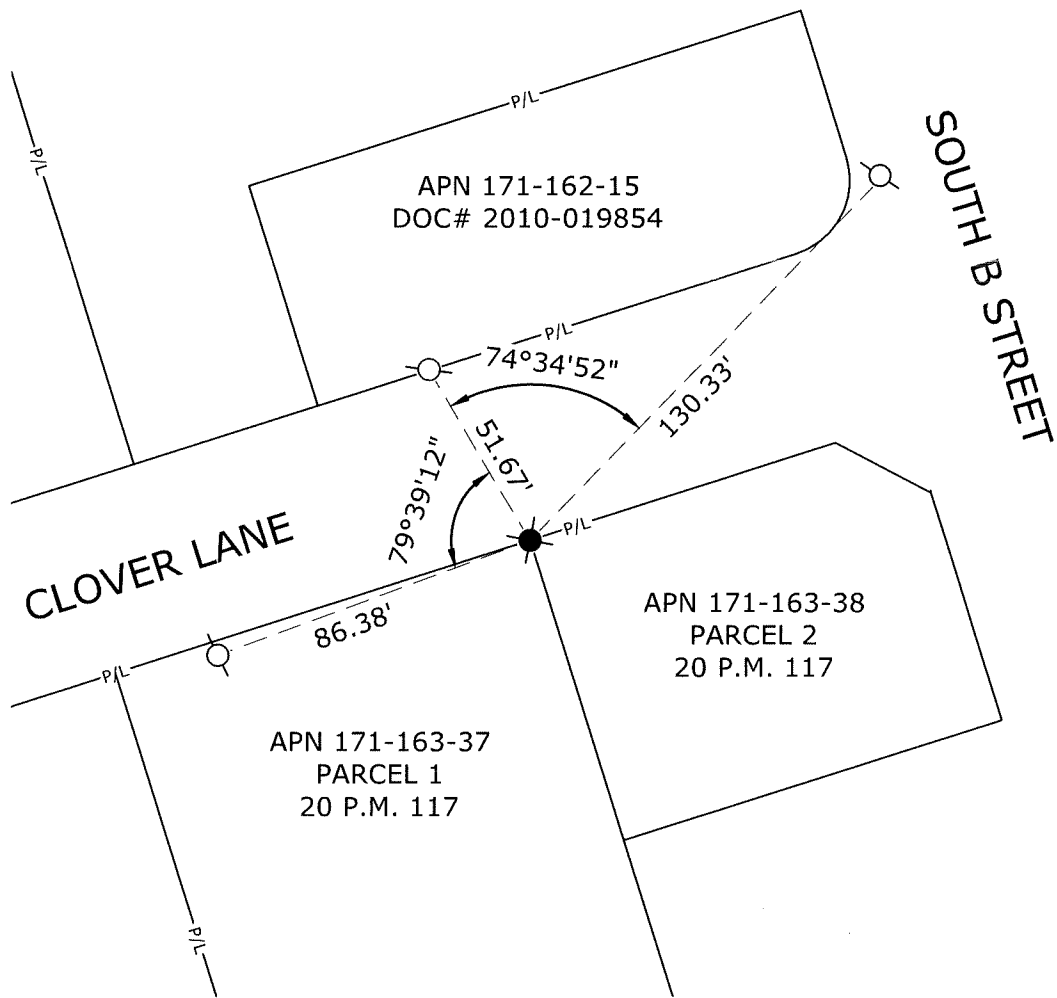
8657

Title

County Surveyor

County Surveyor's Comment



LEGEND:

- FOUND 1" IRON PIPE, NO CAP
 SET MAG NAIL

S.J.C.R. SAN JOAQUIN COUNTY RECORDS

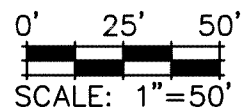
APN ASSESSOR'S PARCEL NUMBER

P.M. PARCEL MAP

REFERENCE:

20 P.M. 117, S.J.C.R.

NOTE: THE PURPOSE OF THIS CORNER RECORD IS TO PERPETUATE THE POSITION(S) OF EXISTING MONUMENT(S). NO REPRESENTATION IS MADE TO ANY RELATIVE POSITION(S) OF SAID MONUMENT(S). ALL RIGHT OF WAY, PROPERTY LINES, CENTERLINES AND OTHERS ARE FOR GRAPHICAL REPRESENTATION ONLY.



905 Sutter St., Suite 200, Folsom, CA 95630
 (916) 366-3040 Fax (916) 366-3303
 R. E. Y. ENGINEERS, Inc.
 Civil Engineers / Land Surveyors

CORNER RECORD EXHIBIT MAP

SCALE: 1" = 50'
 JOB NO: 35423081
 DATE: 9/16/2025
 DWG: 35610268